

MAA594Hu21

Monoclonal Antibody to Cytochrome C (CYCS)

Organism Species: *Homo sapiens (Human)*

Instruction manual

FOR RESEARCH USE ONLY

NOT FOR USE IN CLINICAL DIAGNOSTIC PROCEDURES

13th Edition (Revised in Aug, 2023)

[PROPERTIES]

Source: Monoclonal antibody preparation

Host: Mouse

Antibody isotype: IgG2a Kappa

Purification: Protein A + Protein G affinity chromatography

Clone number: C2

Traits: Liquid

Concentration: 1mg/mL

UOM: 10 μ L

Cross Reactivity: Mouse; Rat; Porcine;Cavia;Caprine;Canine;Gallus.

Applications: WB; IHC; ICC/IF

[IMMUNOGEN]

Immunogen: Recombinant CYCS (Glu5~Lys100) expressed in *E.coli*

Accession No.: RPA594Hu01

[APPLICATIONS]

Western blotting: 0.01-2 μ g/mL;

Immunohistochemistry: 5-30 μ g/mL;

Immunocytochemistry: 5-30 μ g/mL;

Optimal working dilutions must be determined by end user.

[FORMULATION]

Form & Buffer: Supplied as solution form in PBS, pH7.4, containing 0.02% NaN₃, 50% glycerol.

[STORAGE AND STABILITY]

Storage: Avoid repeated freeze/thaw cycles.

Store at 4°C for frequent use.

Aliquot and store at -20°C for 24 months.

Stability Test: The thermal stability is described by the loss rate. The loss rate was determined

by accelerated thermal degradation test, that is, incubate the protein at 37°C for 48h, and no obvious degradation and precipitation were observed. The loss rate is less than 5% within the expiration date under appropriate storage condition.

[IDENTIFICATION]

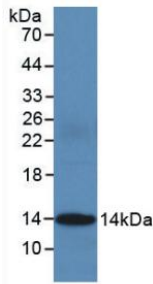
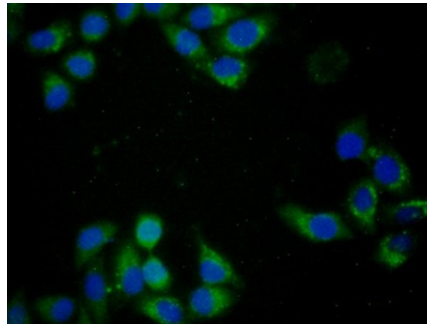
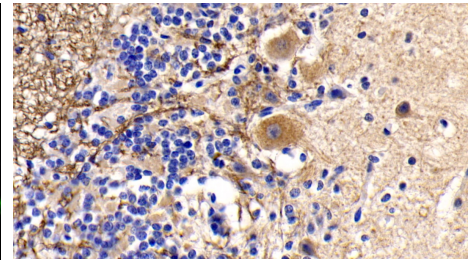


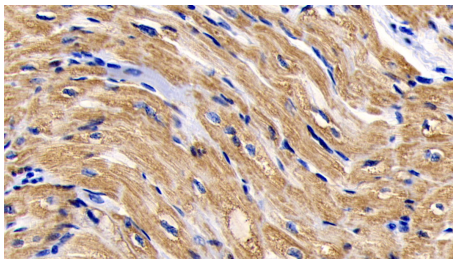
Figure. Western Blot; Sample: Recombinant CYCS, Human.



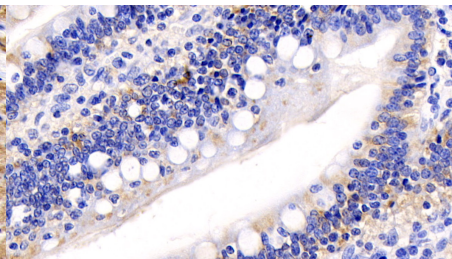
FITC staining on IF; Samples: Human MCF7 Cells; Primary Ab: 40µg/ml Mouse Anti-Human CYCS Antibody
Second Ab: 1µg/ml FITC-Linked Caprine Anti-Mouse IgG Polyclonal Antibody (Catalog: SAA544Mu18)



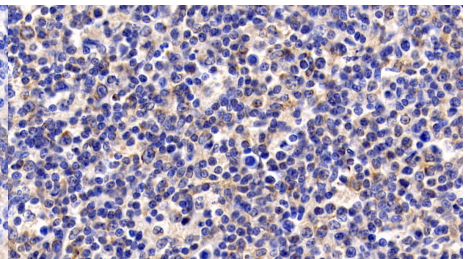
DAB staining on IHC-P;
Sample: Human Cerebellum Tissue;
Primary Ab: 30ug/ml Mouse Anti-Human CYCS Antibody
Second Ab: 2µg/mL HRP-Linked Caprine Anti-Mouse IgG Polyclonal Antibody (Catalog: SAA544Mu19)



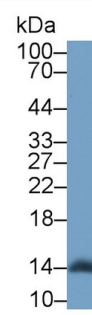
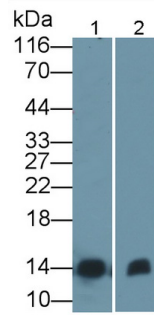
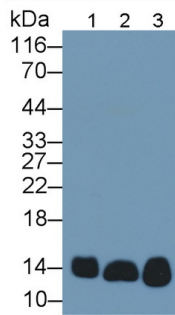
DAB staining on IHC-P;
Sample: Human Cardiac Muscle Tissue;
Primary Ab: 30ug/ml Mouse Anti-Human CYCS Antibody
Second Ab: 2µg/mL HRP-Linked Caprine Anti-Mouse IgG Polyclonal Antibody (Catalog: SAA544Mu19)



DAB staining on IHC-P;
Sample: Human Small intestine Tissue;
Primary Ab: 30ug/ml Mouse Anti-Human CYCS Antibody
Second Ab: 2µg/mL HRP-Linked Caprine Anti-Mouse IgG Polyclonal Antibody (Catalog: SAA544Mu19)



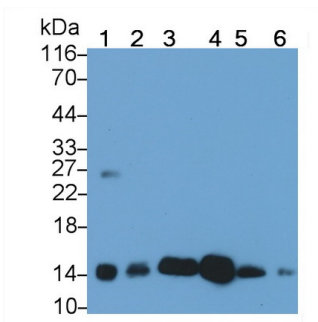
DAB staining on IHC-P;
Sample: Human Lymph node Tissue;
Primary Ab: 30ug/ml Mouse Anti-Human CYCS Antibody
Second Ab: 2µg/mL HRP-Linked Caprine Anti-Mouse IgG Polyclonal Antibody (Catalog: SAA544Mu19)



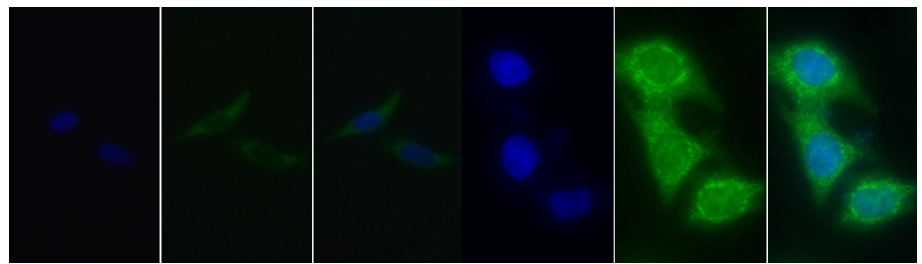
Western Blot; Sample: Lane1: 293T cell lysate; Lane2: Rat Liver lysate; Lane3: Rat Heart lysate
 Primary Ab: 2ug/ml Mouse Anti-Human CYCS Antibody
 Second Ab: 0.2µg/mL HRP-Linked Caprine Anti-Mouse IgG Polyclonal Antibody
 (Catalog: SAA544Mu19)

Western Blot; Sample: Lane1: Jurkat cell lysate; Lane2: Mouse Heart lysate
 Primary Ab: 0.2ug/ml Mouse Anti-Human CYCS Antibody
 Second Ab: 0.2µg/mL HRP-Linked Caprine Anti-Mouse IgG Polyclonal Antibody
 (Catalog: SAA544Mu19)

Western Blot; Sample: Rat Liver lysate;
 Primary Ab: 2µg/ml Mouse Anti-Human CYCS Antibody
 Second Ab: 0.2µg/mL HRP-Linked Caprine Anti-Mouse IgG Polyclonal Antibody
 (Catalog: SAA544Mu19)



Western Blot; Sample: Lane1: Porcine Heart lysate; Lane2: Gallus Heart lysate; Lane3: Canine Heart lysate; Lane4: Caprine Heart lysate; Lane5: Cavia Heart lysate; Lane6: Rabbit Heart lysate
 Primary Ab: 0.2?g/ml Mouse Anti-Human CYCS Antibody
 Second Ab: 0.2µg/mL HRP-Linked Caprine Anti-Mouse IgG Polyclonal Antibody
 (Catalog: SAA544Mu19)



FITC staining on IF;
 Sample: Human HepG2 cell;
 Primary Ab: 20?g/ml Mouse Anti-Human CYCS Antibody
 Second Ab: 5?g/ml FITC-Linked Caprine Anti-Mouse IgG Polyclonal Antibody
 (Catalog: SAA544Mu18)

FITC staining on IF;
 Sample: Human Hela cell;
 Primary Ab: 30ug/ml Mouse Anti-Human CYCS Antibody
 Second Ab: 2µg/ml FITC-Linked Caprine Anti-Mouse IgG Polyclonal Antibody
 (Catalog: SAA544Mu18)

[IMPORTANT NOTE]

The kit is designed for research use only, we will not be responsible for any issue if the kit was used in clinical diagnostic or any other procedures.