

mA90884Hu22
Monoclonal Antibody to Dipeptidyl Peptidase IV (DPP4)
Organism: Homo sapiens (Human)
Instruction manual

FOR IN VITRO USE AND RESEARCH USE ONLY
NOT FOR USE IN CLINICAL DIAGNOSTIC PROCEDURES

7th Edition (Revised in May, 2013)

[**PRODUCT INFORMATION**]

Immunogen: DPP4, Human

Clonality: Monoclonal

Host: Mouse

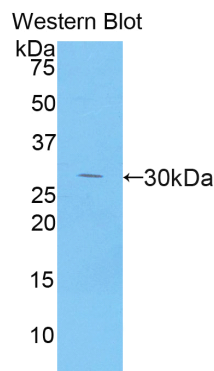
Immunoglobulin Type: IgG

Purification: Affinity Chromatography.

Applications: WB, ICC, IHC-P, IHC-F, ELISA

Concentration: 500µg/mL

UOM: 200µg



Sample: Recombinant DPP4, Human

[**IMMUNOGEN INFORMATION**]

Immunogen: Recombinant DPP4 (Ser484~Val728) expressed in *E.coli*.

USCN Accession No.: rP90884Hu01

Sequence: The target protein is fused with N-terminal His-Tag and its sequence is listed below.

MGHHHHHSGSEF-SSVNDKG LRVLEDNSAL DKMLQNVQMP SKKLDIFIILN ETKFWYQMIL
PPHFDKSKKY PLLLDVYAGP CSQKADTVFR LNWATYLAST ENIIVASFDG RGSYGQGDKI
MHAINRRLGT FEVEDQIEAA RQFSKMGFVD NKRIAIWGPS YGGYVTSMVL
GSGSGVFKCG IAVAPVSRWE YYDSVYTERY MGLPTPEDNL DHYRNSTVMS
RAENFKQVEY LLIHGTADDN VHFQQSAQIS KALVDVGV

Unique product Superb quality Client favorite Nicest service  ISO9001:2008;  ISO13485:2003; 

[ANTIBODY SPECIFICITY]

The antibody is a mouse monoclonal antibody raised against DPP4. It has been selected for its ability to recognize DPP4 in immunohistochemical staining and western blotting.

[APPLICATIONS]

Western blotting: 1:100-400

Immunocytochemistry in formalin fixed cells: 1:100-500

Immunohistochemistry in formalin fixed frozen section: 1:100-500

Immunohistochemistry in paraffin section: 1:50-200

Enzyme-linked Immunosorbent Assay: 1:100-200

Optimal working dilutions must be determined by end user.

[CONTENTS]

Form & Buffer: Supplied as solution form in PBS, pH7.4, containing 0.02% NaN₃, 50% glycerol.

[STORAGE]

Store at 4°C for frequent use. Stored at -20°C to -80°C in a manual defrost freezer for one year without detectable loss of activity. Avoid repeated freeze-thaw cycles.