

MAA461Ge27

Monoclonal Antibody to Estradiol (E2)

Organism Species: *Pan-species (General)*

Instruction manual

FOR RESEARCH USE ONLY

NOT FOR USE IN CLINICAL DIAGNOSTIC PROCEDURES

13th Edition (Revised in Aug, 2023)

[PROPERTIES]

Source: Monoclonal antibody preparation

Host: Mouse

Antibody isotype: IgG1 Kappa

Purification: Protein A + Protein G affinity chromatography

Clone number: C5

Traits: Liquid

Concentration: 1mg/ml

UOM: 200µl

Cross Reactivity: N/A

Applications: ELISA, CLIA. / IHC-Fr, ICC, IP (predicted).

[IMMUNOGEN]

Immunogen: Small Molecule, Estradiol conjugated to OVA.

Accession No.: CPA461Ge21

[APPLICATIONS]

Immunohistochemistry: 5-20µg/mL;

Immunofluorescence:5-20µg/mL;

Optimal working dilutions must be determined by end user.

[FORMULATION]

Form & Buffer: Supplied as solution form in PBS, pH7.4, containing 0.02% NaN₃, 50% glycerol.

[STORAGE AND STABILITY]

Storage: Avoid repeated freeze/thaw cycles.

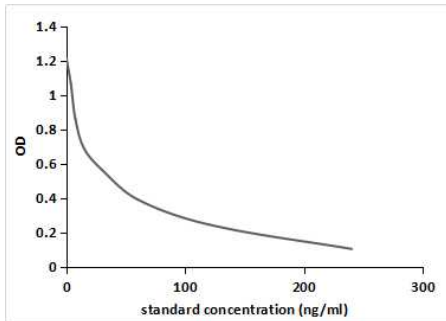
Store at 4°C for frequent use.

Aliquot and store at -20°C for 24 months.

Stability Test: The thermal stability is described by the loss rate. The loss rate was determined by accelerated thermal degradation test, that is, incubate the protein at 37°C for 48h, and no

obvious degradation and precipitation were observed. The loss rate is less than 5% within the expiration date under appropriate storage condition.

[IDENTIFICATION]



Competitive inhibition ELISA;

Coated protein: E2 conjugated to BSA

(Catalog:CPA461Ge11);

Standard:Series Diluted E2;

Primary Ab: 15.28 μ g/ml Mouse Anti E2

Antibody;

Second Ab: 2 μ g/mL HRP-Linked

Caprine Anti-mouse IgG

PolyclonalAntibody

(Catalog: SAA544Rb19)

IC50=15ng/ml

[IMPORTANT NOTE]

The kit is designed for research use only, we will not be responsible for any issue if the kit was used in clinical diagnostic or any other procedures.