

**MAA930Hu22**

**Monoclonal Antibody to Extracellular Signal Regulated Kinase 2 (ERK2)**

**Organism Species: *Homo sapiens (Human)***

***Instruction manual***

FOR RESEARCH USE ONLY

NOT FOR USE IN CLINICAL DIAGNOSTIC PROCEDURES

---

13th Edition (Revised in Aug, 2023)

**[ PROPERTIES ]**

**Source:** Monoclonal antibody preparation

**Host:** Mouse

**Antibody isotype:** IgG2a Kappa

**Purification:** Protein A + Protein G affinity chromatography

**Clone number:** C1

**Traits:** Liquid

**Concentration:** 1mg/mL

**UOM:** 100µL

**Cross Reactivity:** Mouse;Rat;Cavia;Canine;Porcine;Bovine;Caprine;Ovine

**Applications:** WB; IHC

**[ IMMUNOGEN ]**

**Immunogen:** Recombinant ERK2 (Tyr25~Ser360) expressed in *E.coli*

**Accession No.:** RPA930Hu02

**[ APPLICATIONS ]**

Western blotting: 0.01-2µg/ml;

Immunohistochemistry: 5-20µg/mL;

Optimal working dilutions must be determined by end user.

**[ FORMULATION ]**

**Form & Buffer:** Supplied as solution form in 0.01M PBS, pH7.4, containing 0.05% Proclin-300, 50% glycerol.

**[ STORAGE AND STABILITY ]**

**Storage:** Avoid repeated freeze/thaw cycles.

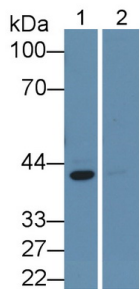
Store at 4°C for frequent use.

Aliquot and store at -20°C for 24 months.

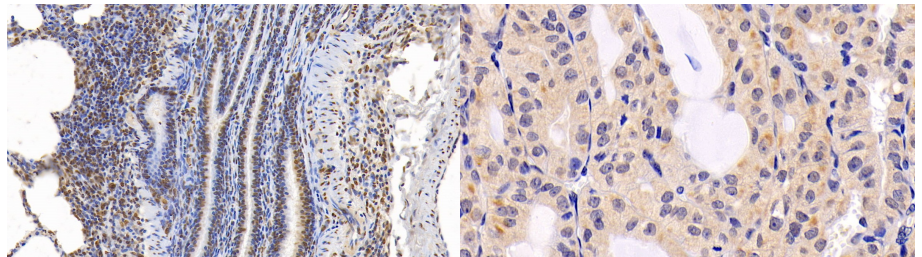
**Stability Test:** The thermal stability is described by the loss rate. The loss rate was determined by accelerated thermal degradation test, that is, incubate the protein at 37°C for 48h, and no

obvious degradation and precipitation were observed. The loss rate is less than 5% within the expiration date under appropriate storage condition.

**[ IDENTIFICATION ]**

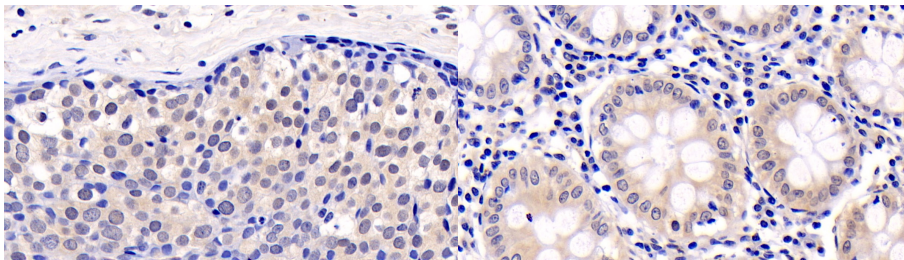


Western Blot; Sample: Lane1: Rat Cerebrum lysate; Lane2: Human Hela cell lysate Primary Ab: 2µg/ml Mouse Anti-Human ERK2 Antibody Second Ab: 0.2µg/mL HRP-Linked Caprine Anti-Mouse IgG Polyclonal Antibody (Catalog: SAA544Mu19)



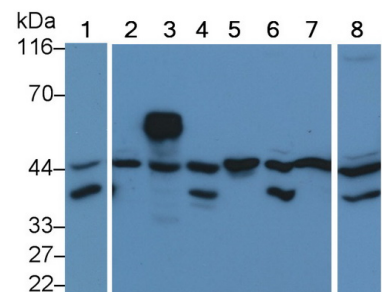
DAB staining on IHC-P; Samples: Porcine Lung Tissue; Primary Ab: 10µg/ml Mouse Anti-Human ERK2 Antibody Second Ab: 2µg/mL HRP-Linked Caprine Anti-Mouse IgG Polyclonal Antibody (Catalog: SAA544Mu19)

DAB staining on IHC-P; Sample: Human Thyroid cancer Tissue; Primary Ab: 20µg/ml Mouse Anti-Human ERK2 Antibody Second Ab: 2µg/mL HRP-Linked Caprine Anti-Mouse IgG Polyclonal Antibody (Catalog: SAA544Mu19)



DAB staining on IHC-P; Sample: Human Breast cancer Tissue; Primary Ab: 20µg/ml Mouse Anti-Human ERK2 Antibody Second Ab: 2µg/mL HRP-Linked Caprine Anti-Mouse IgG Polyclonal Antibody (Catalog: SAA544Mu19)

DAB staining on IHC-P; Sample: Human Colon Tissue; Primary Ab: 20µg/ml Mouse Anti-Human ERK2 Antibody Second Ab: 2µg/mL HRP-Linked Caprine Anti-Mouse IgG Polyclonal Antibody (Catalog: SAA544Mu19)



Western Blot; Sample: Lane1: Porcine Cerebrum lysate; Lane2: Rat Cerebrum lysate; Lane3: Mouse Cerebrum lysate; Lane4: Canine Cerebrum lysate; Lane5: Gallus Cerebrum lysate; Lane6: Bovine Cerebrum lysate; Lane7: Cavia Cerebrum lysate; Lane8: Caprine Cerebrum lysate Primary Ab: 0.4µg/ml Mouse Anti-Human ERK2 Antibody

Second Ab: 0.2µg/mL HRP-Linked  
Caprine Anti-Mouse IgG Polyclonal  
Antibody  
(Catalog: SAA544Mu19)

**[ IMPORTANT NOTE ]**

The kit is designed for research use only, we will not be responsible for any issue if the kit was used in clinical diagnostic or any other procedures.