

MAD021Mu29

Monoclonal Antibody to Ferritin, Heavy Polypeptide (FTH)

Organism Species: *Mus musculus* (Mouse)

Instruction manual

FOR RESEARCH USE ONLY

NOT FOR USE IN CLINICAL DIAGNOSTIC PROCEDURES

13th Edition (Revised in Aug, 2023)

[PROPERTIES]

Source: Monoclonal antibody preparation

Host: Mouse

Antibody isotype: IgG2b Lambda

Purification: Protein A + Protein G affinity chromatography

Clone number: C6

Traits: Liquid

Concentration: 1mg/ml

UOM: 100µl

Cross Reactivity: Human

Applications: WB;ICC/IF

[IMMUNOGEN]

Immunogen: Recombinant FTH (Met1~Ser182) expressed in *E.coli*

Accession No.: RPD021Mu01

[APPLICATIONS]

Western blotting: 0.01-3µg/mL;

Immunocytochemistry: 5-30µg/mL;

Optimal working dilutions must be determined by end user.

[FORMULATION]

Form & Buffer: Supplied as solution form in 0.01M PBS, pH7.4, containing 0.05% Proclin-300, 50% glycerol.

[STORAGE AND STABILITY]

Storage: Avoid repeated freeze/thaw cycles.

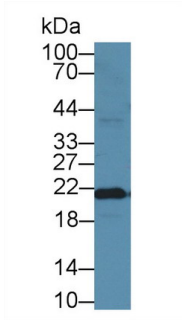
Store at 4°C for frequent use.

Aliquot and store at -20°C for 24 months.

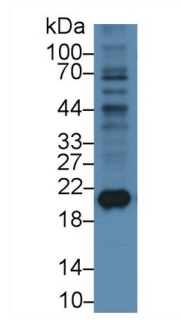
Stability Test: The thermal stability is described by the loss rate. The loss rate was determined by accelerated thermal degradation test, that is, incubate the protein at 37°C for 48h, and no

obvious degradation and precipitation were observed. The loss rate is less than 5% within the expiration date under appropriate storage condition.

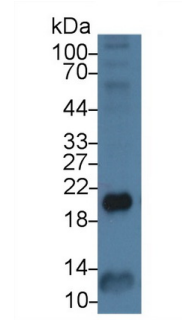
[IDENTIFICATION]



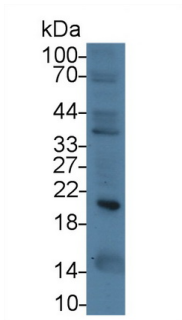
Western Blot; Sample: Mouse Cerebrum lysate; Primary Ab: 3µg/ml Mouse Anti-Mouse FTH Antibody
Second Ab: 0.2µg/mL HRP-Linked Caprine Anti-Mouse IgG Polyclonal Antibody (Catalog: SAA544Mu19)



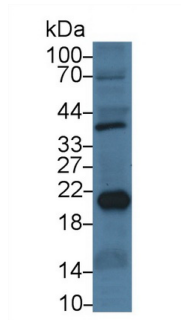
Western Blot; Sample: Human Liver lysate; Primary Ab: 3µg/ml Mouse Anti-Mouse FTH Antibody
Second Ab: 0.2µg/mL HRP-Linked Caprine Anti-Mouse IgG Polyclonal Antibody (Catalog: SAA544Mu19)



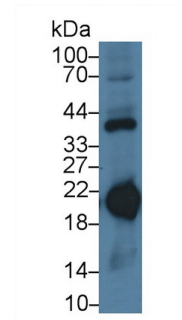
Western Blot; Sample: Human Lung lysate; Primary Ab: 3µg/ml Mouse Anti-Mouse FTH Antibody
Second Ab: 0.2µg/mL HRP-Linked Caprine Anti-Mouse IgG Polyclonal Antibody (Catalog: SAA544Mu19)



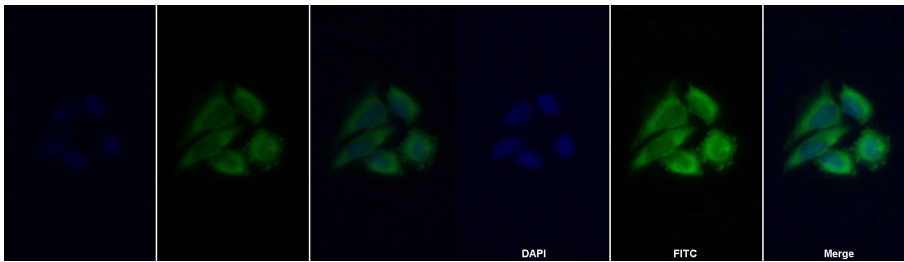
Western Blot; Sample: Human 293T cell lysate; Primary Ab: 3µg/ml Mouse Anti-Mouse FTH Antibody
Second Ab: 0.2µg/mL HRP-Linked Caprine Anti-Mouse IgG Polyclonal Antibody (Catalog: SAA544Mu19)



Western Blot; Sample: Human HepG2 cell lysate; Primary Ab: 3µg/ml Mouse Anti-Mouse FTH Antibody
Second Ab: 0.2µg/mL HRP-Linked Caprine Anti-Mouse IgG Polyclonal Antibody (Catalog: SAA544Mu19)



Western Blot; Sample: Human U87MG cell lysate; Primary Ab: 3µg/ml Mouse Anti-Mouse FTH Antibody
Second Ab: 0.2µg/mL HRP-Linked Caprine Anti-Mouse IgG Polyclonal Antibody (Catalog: SAA544Mu19)



FITC staining on IF;

Samples: Human HepG2 cell;

Primary Ab: 20µg/ml Mouse Anti-Mouse

FTH Antibody

Second Ab: 1µg/ml FITC-Linked

Caprine Anti-Mouse IgG Polyclonal
Antibody

(Catalog: SAA544Mu18)

FITC staining on IF;

Sample: HepG2 cell

Primary Ab: 20µg/ml Mouse Anti-Mouse

FTH Antibody

Second Ab: 2µg/ml FITC-Linked

Caprine Anti-Mouse IgG Polyclonal
Antibody

(Catalog: SAA544Mu11)

[IMPORTANT NOTE]

The kit is designed for research use only, we will not be responsible for any issue if the kit was used in clinical diagnostic or any other procedures.