

**MAA183Hu22**

**Monoclonal Antibody to Galactosidase Alpha (GLa)**

**Organism Species: *Homo sapiens (Human)***

***Instruction manual***

FOR RESEARCH USE ONLY

NOT FOR USE IN CLINICAL DIAGNOSTIC PROCEDURES

---

13th Edition (Revised in Aug, 2023)

**[ PROPERTIES ]**

**Source:** Monoclonal antibody preparation

**Host:** Mouse

**Antibody isotype:** IgM Kappa

**Purification:** Protein A + Protein G affinity chromatography

**Clone number:** B1

**Traits:** Liquid

**Concentration:** 1mg/mL

**UOM:** 100 $\mu$ L

**Cross Reactivity:** N/A

**Applications:** WB; IHC

**[ IMMUNOGEN ]**

**Immunogen:** Recombinant GLa (Met1~Gly80) expressed in *E.coli*

**Accession No.:** RPA183Hu03

**[ APPLICATIONS ]**

Western blotting: 0.01-5 $\mu$ g/mL;

Immunohistochemistry: 5-50 $\mu$ g/mL;

Optimal working dilutions must be determined by end user.

**[ FORMULATION ]**

**Form & Buffer:** Supplied as solution form in 0.01M PBS, pH7.4, containing 0.05% Proclin-300, 50% glycerol.

**[ STORAGE AND STABILITY ]**

**Storage:** Avoid repeated freeze/thaw cycles.

Store at 4°C for frequent use.

Aliquot and store at -20°C for 24 months.

**Stability Test:** The thermal stability is described by the loss rate. The loss rate was determined by accelerated thermal degradation test, that is, incubate the protein at 37°C for 48h, and no

obvious degradation and precipitation were observed. The loss rate is less than 5% within the expiration date under appropriate storage condition.

**[ IDENTIFICATION ]**

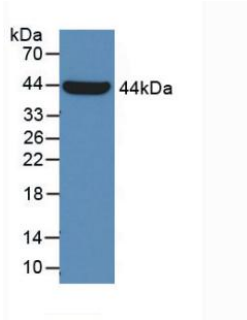
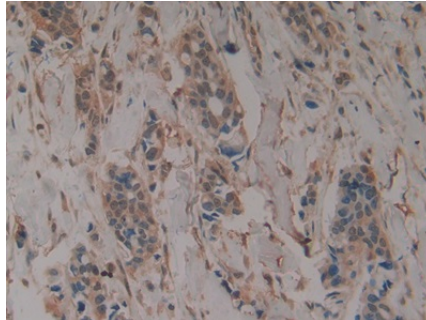
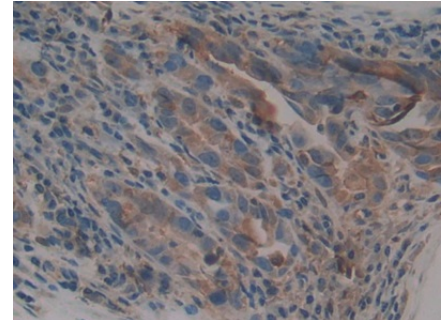


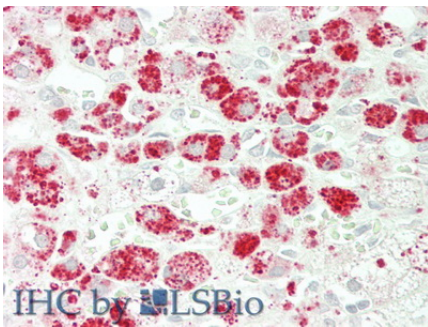
Figure. Western Blot; Sample: Recombinant GLa, Human.



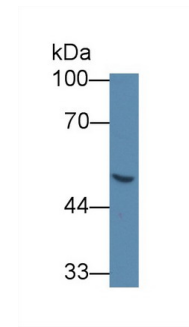
DAB staining on IHC-P; Samples: Human Breast cancer Tissue; Primary Ab: 40µg/ml Mouse Anti-Human GLa Antibody Second Ab: 2µg/mL HRP-Linked Caprine Anti-Mouse IgG Polyclonal Antibody (Catalog: SAA544Mu19)



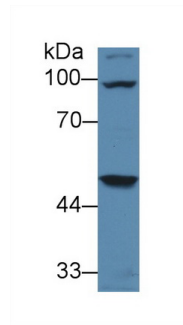
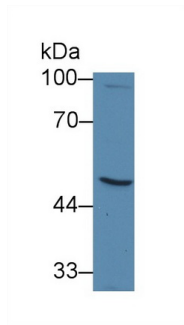
DAB staining on IHC-P; Samples: Human Stomach Tissue; Primary Ab: 40µg/ml Mouse Anti-Human GLa Antibody Second Ab: 2µg/mL HRP-Linked Caprine Anti-Mouse IgG Polyclonal Antibody (Catalog: SAA544Mu19)



Vector Red staining on IHC-P; Samples: Human Adrenal gland Tissue; Primary Ab: 20µg/ml Mouse Anti-Human GLa Antibody Second Ab: 2µg/mL HRP-Linked Caprine Anti-Mouse IgG Monoclonal Antibody



Western Blot; Sample: Human 293T cell lysate; Primary Ab: 5µg/ml Mouse Anti-Human GLa Antibody Second Ab: 0.2µg/mL HRP-Linked Caprine Anti-Mouse IgG Polyclonal Antibody (Catalog: SAA544Mu19)



Western Blot; Sample: Human MCF7 cell lysate;      Western Blot; Sample: Human HeLa cell lysate;

Primary Ab: 5µg/ml Mouse Anti-Human GLa Antibody      Primary Ab: 5µg/ml Mouse Anti-Human GLa Antibody

Second Ab: 0.2µg/mL HRP-Linked      Second Ab: 0.2µg/mL HRP-Linked

Caprine Anti-Mouse IgG Polyclonal Antibody      Caprine Anti-Mouse IgG Polyclonal Antibody

(Catalog: SAA544Mu19)

(Catalog: SAA544Mu19)

**[ IMPORTANT NOTE ]**

The kit is designed for research use only, we will not be responsible for any issue if the kit was used in clinical diagnostic or any other procedures.