

MAA302Hu21

Monoclonal Antibody to Galectin 2 (GAL2)

Organism Species: *Homo sapiens* (Human)

Instruction manual

FOR RESEARCH USE ONLY

NOT FOR USE IN CLINICAL DIAGNOSTIC PROCEDURES

13th Edition (Revised in Aug, 2023)

[PROPERTIES]

Source: Monoclonal antibody preparation

Host: Mouse

Antibody isotype: IgG2b Kappa

Purification: Protein A + Protein G affinity chromatography

Clone number: C6

Traits: Liquid

Concentration: 1mg/mL

UOM: 100 μ L

Cross Reactivity: Mouse;Rat;Porcine

Applications: WB; IHC

[IMMUNOGEN]

Immunogen: Recombinant GAL2 (Met1~Glu132 (Accession # P05162)) expressed in *E.coli*

Accession No.: RPA302Hu01

[APPLICATIONS]

Western blotting: 0.01-3 μ g/mL;

Immunohistochemistry: 5-30 μ g/mL;

Optimal working dilutions must be determined by end user.

[FORMULATION]

Form & Buffer: Supplied as solution form in 0.01M PBS, pH7.4, containing 0.05% Proclin-300, 50% glycerol.

[STORAGE AND STABILITY]

Storage: Avoid repeated freeze/thaw cycles.

Store at 4°C for frequent use.

Aliquot and store at -20°C for 24 months.

Stability Test: The thermal stability is described by the loss rate. The loss rate was determined by accelerated thermal degradation test, that is, incubate the protein at 37°C for 48h, and no

obvious degradation and precipitation were observed. The loss rate is less than 5% within the expiration date under appropriate storage condition.

[IDENTIFICATION]

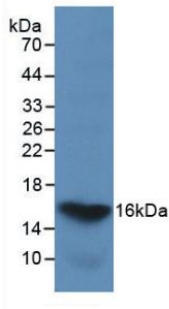
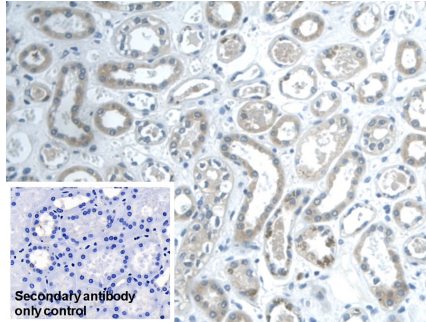
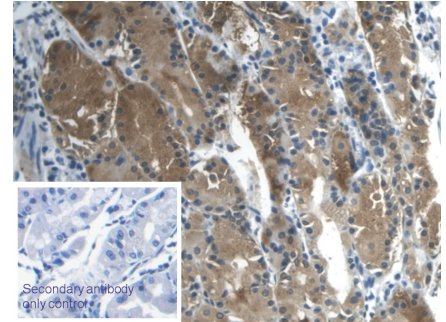


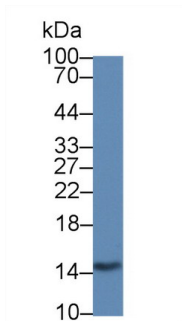
Figure. Western Blot; Sample: Recombinant GAL2, Human.



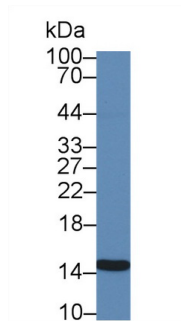
DAB staining on IHC-P; Sample: Human Kidney Tissue; Primary Ab: 30µg/ml Mouse Anti-Human GAL2 Antibody Second Ab: 2µg/mL HRP-Linked Caprine Anti-Mouse IgG Polyclonal Antibody (Catalog: SAA544Mu19) Secondary antibody only control: Used PBS instead of primary antibody , Second Ab: 2µg/mL HRP-Linked



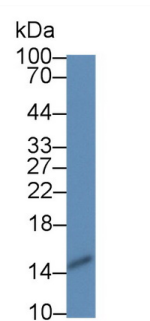
DAB staining on IHC-P; Sample: Human Stomach Tissue; Primary Ab: 30µg/ml Mouse Anti-Human GAL2 Antibody Second Ab: 2µg/mL HRP-Linked Caprine Anti-Mouse IgG Polyclonal Antibody (Catalog: SAA544Mu19) Secondary antibody only control: Used PBS instead of primary antibody , Second Ab: 2µg/mL HRP-Linked Caprine Anti-Mouse IgG Polyclonal Antibody (Catalog: SAA544Mu19)



Western Blot; Sample: Rat Stomach lysate;



Western Blot; Sample: Porcine Stomach lysate;



Western Blot; Sample: Mouse Stomach lysate;

Primary Ab: 3µg/ml Mouse Anti-Human Primary Ab: 3µg/ml Mouse Anti-Human Primary Ab: 3µg/ml Mouse Anti-Human

GAL2 Antibody

Second Ab: 0.2µg/mL HRP-Linked
Caprine Anti-Mouse IgG Polyclonal
Antibody
(Catalog: SAA544Mu19) Selected

GAL2 Antibody

Second Ab: 0.2µg/mL HRP-Linked
Caprine Anti-Mouse IgG Polyclonal
Antibody
(Catalog: SAA544Mu19) Selected

GAL2 Antibody

Second Ab: 0.2µg/mL HRP-Linked
Caprine Anti-Mouse IgG Polyclonal
Antibody
(Catalog: SAA544Mu19) Selected

[IMPORTANT NOTE]

The kit is designed for research use only, we will not be responsible for any issue if the kit was used in clinical diagnostic or any other procedures.