

**MAB932Hu23**

**Monoclonal Antibody to Glyceraldehyde-3-Phosphate Dehydrogenase (GAPDH)**

**Organism Species: *Homo sapiens (Human)***

***Instruction manual***

FOR RESEARCH USE ONLY

NOT FOR USE IN CLINICAL DIAGNOSTIC PROCEDURES

---

13th Edition (Revised in Aug, 2023)

**[ PROPERTIES ]**

**Source:** Monoclonal antibody preparation

**Host:** Mouse

**Antibody isotype:** IgG1 Kappa

**Purification:** Protein A + Protein G affinity chromatography

**Clone number:** E9

**Traits:** Liquid

**Concentration:** 1mg/ml

**UOM:** 100ul

**Cross**

**Reactivity:** Mouse;Rat;Cavia;Rabbit;Canine;Porcine;Bovine;Caprine;Ovine;Equine;Gallus

**Applications:** WB; IHC; ICC; IP.

**[ IMMUNOGEN ]**

**Immunogen:** Recombinant GAPDH (Gly2~Ser148) expressed in *E.coli*

**Accession No.:** RPB932Hu01

**[ APPLICATIONS ]**

Western blotting: 0.01-3µg/mL;

Immunohistochemistry: 5-20µg/mL;

Immunocytochemistry: 5-20µg/mL;

Optimal working dilutions must be determined by end user.

**[ FORMULATION ]**

**Form & Buffer:** Supplied as solution form in 0.01M PBS, pH7.4, containing 0.05% Proclin-300, 50% glycerol.

**[ STORAGE AND STABILITY ]**

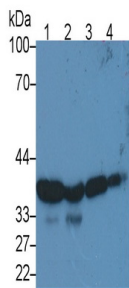
**Storage:** Avoid repeated freeze/thaw cycles.

Store at 4°C for frequent use.

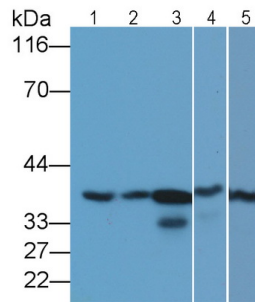
Aliquot and store at -20°C for 24 months.

**Stability Test:** The thermal stability is described by the loss rate. The loss rate was determined by accelerated thermal degradation test, that is, incubate the protein at 37°C for 48h, and no obvious degradation and precipitation were observed. The loss rate is less than 5% within the expiration date under appropriate storage condition.

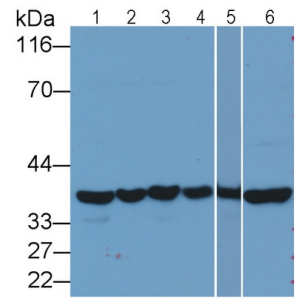
**[ IDENTIFICATION ]**



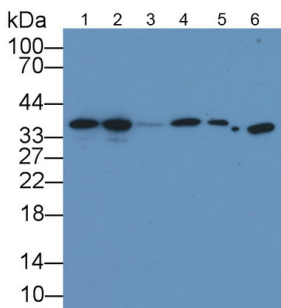
Western Blot; Sample: Lane1: Rat Cerebrum lysate; Lane2: Rat Heart lysate; Lane3: A549 cell lysate; Lane4: HepG2 cell lysate  
 Primary Ab: 3µg/ml Mouse Anti-Human GAPDH Antibody  
 Second Ab: 0.2µg/mL HRP-Linked Caprine Anti-Mouse IgG Polyclonal Antibody (Catalog: SAA544Mu19)



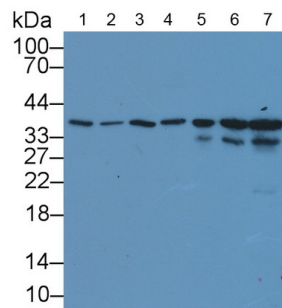
Western Blot; Sample: Lane1: Human Lung lysate; Lane2: Human Placenta lysate; Lane3: Mouse Cerebrum lysate; Lane4: Cavia Cerebrum lysate; Lane5: Rabbit Cerebrum lysate  
 Primary Ab: 1µg/ml Mouse Anti-Human GAPDH Antibody  
 Second Ab: 0.2µg/mL HRP-Linked Caprine Anti-Mouse IgG Polyclonal Antibody (Catalog: SAA544Mu19)



Western Blot; Sample: Lane1: Canine Cerebrum lysate; Lane2: Porcine Cerebrum lysate; Lane3: Bovine Cerebrum lysate; Lane4: Gallus Cerebrum lysate; Lane5: Equine Liver Cerebrum lysate; Lane6: Caprine Cerebrum lysate  
 Primary Ab: 1µg/ml Mouse Anti-Human GAPDH Antibody  
 Second Ab: 0.2µg/mL HRP-Linked Caprine Anti-Mouse IgG Polyclonal Antibody (Catalog: SAA544Mu19)



Western Blot; Sample: Lane1: Human Lung lysate; Lane2: 293T cell lysate; Lane3: Cavia Liver lysate; Lane4: Cavia



Western Blot; Sample: Lane1: Gallus Kidney lysate; Lane2: Rabbit Liver lysate; Lane3: Rabbit Kidney lysate;

Kidney lysate; Lane5: Porcine Liver  
lysate; Lane6: Porcine Kidney lysate  
Primary Ab: 0.5µg/ml Mouse Anti-  
Human GAPDH Antibody  
Second Ab: 0.2µg/mL HRP-Linked  
Caprine Anti-Mouse IgG Polyclonal  
Antibody  
(Catalog: SAA544Mu19)

Lane4: Caprine Liver lysate; Lane5:  
Mouse Liver lysate; Lane6: Rat Liver  
lysate; Lane7: Rat Kidney lysate  
Primary Ab: 0.5µg/ml Mouse Anti-  
Human GAPDH Antibody  
Second Ab: 0.2µg/mL HRP-Linked  
Caprine Anti-Mouse IgG Polyclonal  
Antibody  
(Catalog: SAA544Mu19)

### **[ IMPORTANT NOTE ]**

The kit is designed for research use only, we will not be responsible for any issue if the kit was used in clinical diagnostic or any other procedures.