

MAC109Hu21

Monoclonal Antibody to Growth Differentiation Factor 3 (GDF3)

Organism Species: *Homo sapiens (Human)*

Instruction manual

FOR RESEARCH USE ONLY

NOT FOR USE IN CLINICAL DIAGNOSTIC PROCEDURES

13th Edition (Revised in Aug, 2023)

[PROPERTIES]

Source: Monoclonal antibody preparation

Host: Mouse

Antibody isotype: IgG2b Kappa

Purification: Protein A + Protein G affinity chromatography

Clone number: A7

Traits: Liquid

Concentration: 1mg/ml

UOM: 100µl

Cross Reactivity: Rat; Porcine.

Applications: WB; ICC/IF.

[IMMUNOGEN]

Immunogen: Recombinant GDF3 (Ala251~Gly364 (Accession # Q9NR23)) expressed in *E.coli*

Accession No.: RPC109Hu01

[APPLICATIONS]

Western blotting: 0.01-2µg/mL;

Immunocytochemistry: 5-20µg/mL;

Optimal working dilutions must be determined by end user.

[FORMULATION]

Form & Buffer: Supplied as solution form in 0.01M PBS, pH7.4, containing 0.05% Proclin-300, 50% glycerol.

[STORAGE AND STABILITY]

Storage: Avoid repeated freeze/thaw cycles.

Store at 4°C for frequent use.

Aliquot and store at -20°C for 24 months.

Stability Test: The thermal stability is described by the loss rate. The loss rate was determined by accelerated thermal degradation test, that is, incubate the protein at 37°C for 48h, and no

obvious degradation and precipitation were observed. The loss rate is less than 5% within the expiration date under appropriate storage condition.

[IDENTIFICATION]

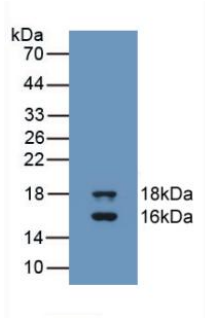
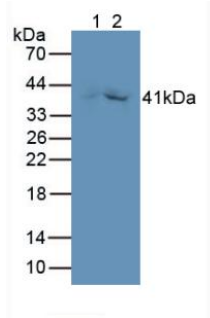
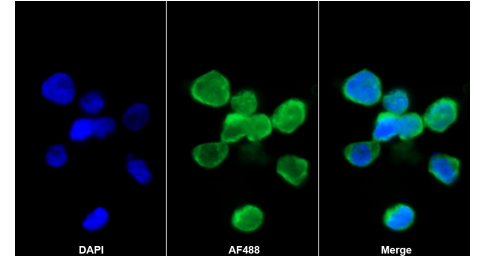


Figure. Western Blot; Sample: Recombinant GDF3, Human.



Western Blot; Sample: Lane1: Rat Kidney lysate; Lane2: Porcine Kidney lysate
 Primary Ab: 2µg/ml Mouse Anti-Human GDF3 Antibody
 Second Ab: 0.2µg/mL HRP-Linked Caprine Anti-Mouse IgG Polyclonal Antibody
 (Catalog: SAA544Mu19) Selected



AF488 staining on IF;
 Sample: HEL92.1.7 cell
 Primary Ab: 20µg/mL Mouse Anti-Human GDF3 Antibody
 Second Ab: 2µg/mL AF488-Linked Caprine Anti-Mouse IgG Polyclonal Antibody
 (Catalog: SAA544Mu11)

[IMPORTANT NOTE]

The kit is designed for research use only, we will not be responsible for any issue if the kit was used in clinical diagnostic or any other procedures.