

MAC167Hu21

Monoclonal Antibody to HLA Class II Histocompatibility Antigen, DRB1 Beta Chain (HLA-DRB1)

Organism Species: *Homo sapiens (Human)*

Instruction manual

FOR RESEARCH USE ONLY

NOT FOR USE IN CLINICAL DIAGNOSTIC PROCEDURES

13th Edition (Revised in Aug, 2023)

[PROPERTIES]

Source: Monoclonal antibody preparation

Host: Mouse

Antibody isotype: IgG1 Kappa

Purification: Protein A + Protein G affinity chromatography

Clone number: C3

Traits: Liquid

Concentration: 1mg/mL

UOM: 100 μ L

Cross Reactivity: Rat;Porcine

Applications: WB; IHC

[IMMUNOGEN]

Immunogen: Recombinant HLA-DRB1 (Gly30~Ser266) expressed in *E.coli*

Accession No.: RPC167Hu01

[APPLICATIONS]

Western blotting: 0.01-2 μ g/mL;

Immunohistochemistry: 5-30 μ g/mL;

Optimal working dilutions must be determined by end user.

[FORMULATION]

Form & Buffer: Supplied as solution form in 0.01M PBS, pH7.4, containing 0.05% Proclin-300, 50% glycerol.

[STORAGE AND STABILITY]

Storage: Avoid repeated freeze/thaw cycles.

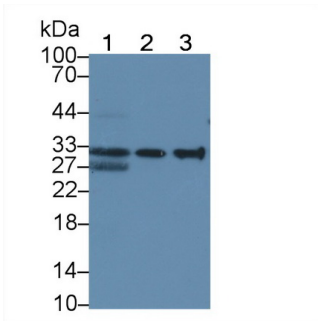
Store at 4°C for frequent use.

Aliquot and store at -20°C for 24 months.

Stability Test: The thermal stability is described by the loss rate. The loss rate was determined by accelerated thermal degradation test, that is, incubate the protein at 37°C for 48h, and no

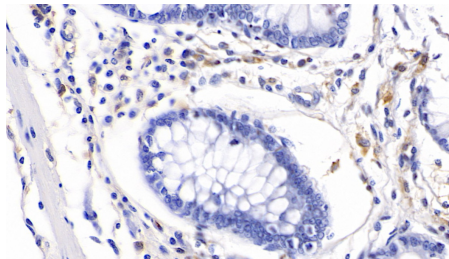
obvious degradation and precipitation were observed. The loss rate is less than 5% within the expiration date under appropriate storage condition.

[IDENTIFICATION]

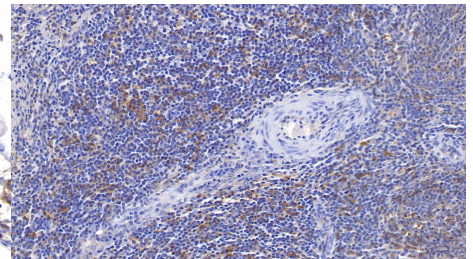


Western Blot; Sample: Lane1: Rat Spleen lysate; Lane2: Rat Spleen (stimulated) lysate; Lane3: Raji cell lysate

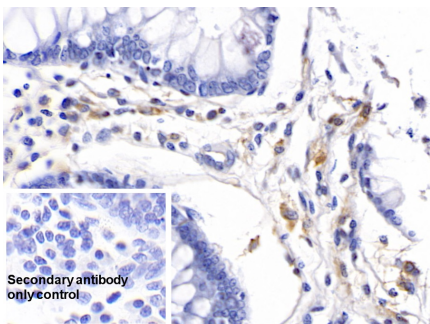
Primary Ab: 2µg/ml Mouse Anti-Human MHC DRb1 Antibody
 Second Ab: 0.2µg/ml HRP-Linked Rabbit Anti-Mouse IgG Polyclonal Antibody
 (Catalog: SAA544Mu19)



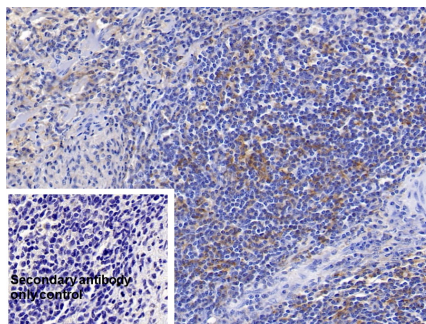
DAB staining on IHC-P; Samples: Human Colon Tissue; Primary Ab: 30µg/ml Mouse Anti-Human MHC DRb1 Antibody Second Ab: 2µg/mL HRP-Linked Caprine Anti-Mouse IgG Polyclonal Antibody (Catalog: SAA544Mu19)



DAB staining on IHC-P; Samples: Human Spleen Tissue; Primary Ab: 30µg/ml Mouse Anti-Human MHC DRb1 Antibody Second Ab: 2µg/mL HRP-Linked Caprine Anti-Mouse IgG Polyclonal Antibody (Catalog: SAA544Mu19)



DAB staining on IHC-P; Sample: Human Colon Tissue Primary Ab: 30µg/ml Mouse Anti-Human HLA-DRB1 Antibody Control: Used PBS instead of primary antibody Second Ab: 2µg/ml HRP-Linked



DAB staining on IHC-P; Sample: Human Spleen Tissue Primary Ab: 30µg/ml Mouse Anti-Human HLA-DRB1 Antibody Control: Used PBS instead of primary antibody Second Ab: 2µg/ml HRP-Linked

Caprine Anti-Mouse IgG Polyclonal

Antibody

(Catalog: SAA544Mu19)

Caprine Anti-Mouse IgG Polyclonal

Antibody

(Catalog: SAA544Mu19)

[IMPORTANT NOTE]

The kit is designed for research use only, we will not be responsible for any issue if the kit was used in clinical diagnostic or any other procedures.