

MAB081Hu21

Monoclonal Antibody to Heat Shock 70kDa Protein 1A (HSPA1A)

Organism Species: *Homo sapiens (Human)*

Instruction manual

FOR RESEARCH USE ONLY

NOT FOR USE IN CLINICAL DIAGNOSTIC PROCEDURES

13th Edition (Revised in Aug, 2023)

[PROPERTIES]

Source: Monoclonal antibody preparation

Host: Mouse

Antibody isotype: IgG2b Kappa

Purification: Protein A + Protein G affinity chromatography

Clone number: 2#

Traits: Liquid

Concentration: 1mg/mL

UOM: 100µL

Cross Reactivity: Mouse;Rat;Cavia;Canine;Bovine;Gallus

Applications: WB; IHC; ICC/IF

[IMMUNOGEN]

Immunogen: Recombinant HSPA1A (Met1~Asp641) expressed in *E.coli*

Accession No.: RPB081Hu01

[APPLICATIONS]

Western blotting: 0.01-3µg/mL;

Immunohistochemistry: 5-20µg/mL;

Immunocytochemistry: 5-20µg/mL;

Optimal working dilutions must be determined by end user.

[FORMULATION]

Form & Buffer: Supplied as solution form in 0.01M PBS, pH7.4, containing 0.05% Proclin-300, 50% glycerol.

[STORAGE AND STABILITY]

Storage: Avoid repeated freeze/thaw cycles.

Store at 4°C for frequent use.

Aliquot and store at -20°C for 24 months.

Stability Test: The thermal stability is described by the loss rate. The loss rate was determined

by accelerated thermal degradation test, that is, incubate the protein at 37°C for 48h, and no obvious degradation and precipitation were observed. The loss rate is less than 5% within the expiration date under appropriate storage condition.

[IDENTIFICATION]

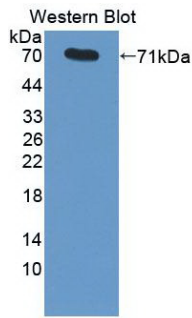
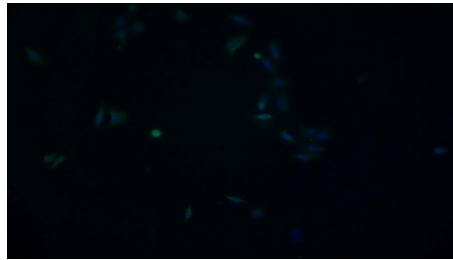
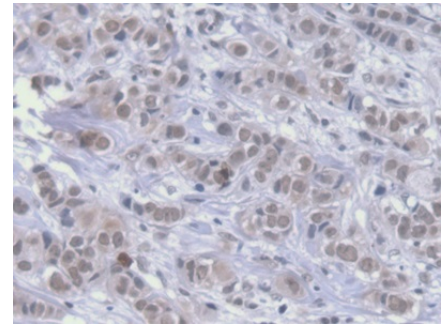


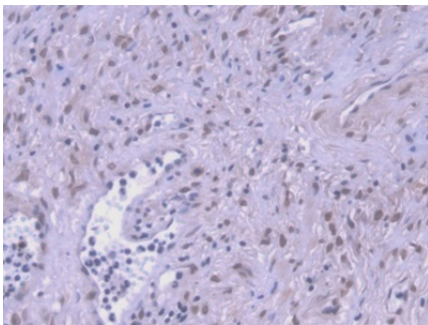
Figure. Western Blot; Sample: Recombinant HSPA1A, Human.



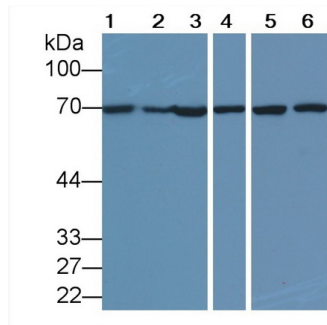
FITC staining on IF; Samples: Human HepG2 cell; Primary Ab: 20µg/ml Mouse Anti-Human HSPA1A Antibody
Second Ab: 1µg/ml FITC-Linked Caprine Anti-Mouse IgG Polyclonal Antibody (Catalog: SAA544Mu18)



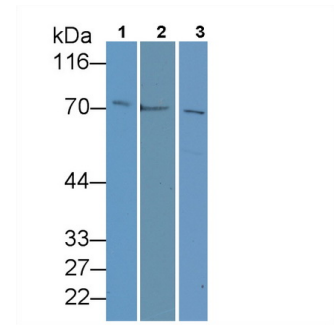
DAB staining on IHC-P; Samples: Human Breast cancer Tissue; Primary Ab: 20µg/ml Mouse Anti-Human HSPA1A Antibody
Second Ab: 2µg/mL HRP-Linked Caprine Anti-Mouse IgG Polyclonal Antibody (Catalog: SAA544Mu19)



DAB staining on IHC-P; Samples: Human Prostate Tissue; Primary Ab: 20µg/ml Mouse Anti-Human HSPA1A Antibody
Second Ab: 2µg/mL HRP-Linked Caprine Anti-Mouse IgG Polyclonal Antibody (Catalog: SAA544Mu19)



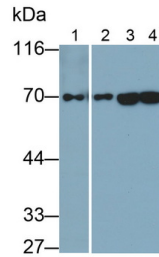
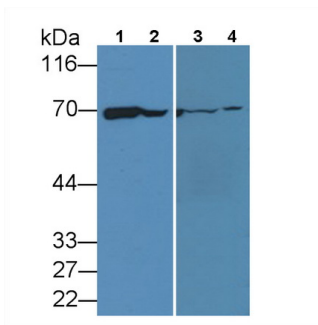
Western Blot; Sample: Lane1: Mouse Cerebrum lysate; Lane2: Cavia Liver lysate; Lane3: Cavia Cerebrum lysate; Lane4: Canine Cerebrum lysate; Lane5: Bovine Liver lysate; Lane6: Bovine Cerebrum lysate
Primary Ab: 1µg/ml Mouse Anti-Human HSPA1A Antibody



Western Blot; Sample: Lane1: Mouse Liver lysate; Lane2: Rat Liver lysate; Lane3: Canine Liver lysate
Primary Ab: 1µg/ml Mouse Anti-Human HSPA1A Antibody
Second Ab: 0.2µg/mL HRP-Linked Caprine Anti-Mouse IgG Polyclonal Antibody

Second Ab: 0.2µg/mL HRP-Linked
Rabbit Anti-Mouse IgG Polyclonal
Antibody
(Catalog: SAA544Mu19)

(Catalog: SAA544Mu19)



Western Blot; Sample: Lane1: HeLa cell lysate; Lane2: Jurkat cell lysate; Lane3: Liver lysate; Lane4: Rat Cerebrum lysate; Lane4: Rat Uterus lysate	Western Blot; Sample: Lane1: Bovine lysate; Lane2: Bovine Cerebrum lysate; Lane3: HepG2 cell lysate; Lane4: HeLa cell lysate
Primary Ab: 3µg/ml Mouse Anti-Human HSPA1A Antibody	Primary Ab: 0.2µg/ml Mouse Anti-Human HSPA1A Antibody
Second Ab: 0.2µg/mL HRP-Linked Caprine Anti-Mouse IgG Polyclonal Antibody	Second Ab: 0.2µg/mL HRP-Linked Caprine Anti-Mouse IgG Polyclonal Antibody
(Catalog: SAA544Mu19)	(Catalog: SAA544Mu19)

[IMPORTANT NOTE]

The kit is designed for research use only, we will not be responsible for any issue if the kit was used in clinical diagnostic or any other procedures.