

**MAA399Hu22**

**Monoclonal Antibody to High Mobility Group Protein 1 (HMGB1)**

**Organism Species: *Homo sapiens (Human)***

***Instruction manual***

FOR RESEARCH USE ONLY

NOT FOR USE IN CLINICAL DIAGNOSTIC PROCEDURES

---

13th Edition (Revised in Aug, 2023)

**[ PROPERTIES ]**

**Source:** Monoclonal antibody preparation

**Host:** Mouse

**Antibody isotype:** IgG1 Kappa

**Purification:** Protein A + Protein G affinity chromatography

**Clone number:** C4

**Traits:** Liquid

**Concentration:** 1mg/mL

**UOM:** 100µL

**Cross Reactivity:** Rat

**Applications:** WB;ICC/IF

**[ IMMUNOGEN ]**

**Immunogen:** Recombinant HMGB1 (Met1~Glu215) expressed in *E.coli*

**Accession No.:** RPA399Hu01

**[ APPLICATIONS ]**

Western blotting: 0.01-3µg/mL;

Immunocytochemistry: 5-40µg/mL;

Optimal working dilutions must be determined by end user

**[ FORMULATION ]**

**Form & Buffer:** Supplied as solution form in PBS, pH7.4, containing 0.02% NaN<sub>3</sub>, 50% glycerol.

**[ STORAGE AND STABILITY ]**

**Storage:** Avoid repeated freeze/thaw cycles.

Store at 4°C for frequent use.

Aliquot and store at -20°C for 24 months.

**Stability Test:** The thermal stability is described by the loss rate. The loss rate was determined by accelerated thermal degradation test, that is, incubate the protein at 37°C for 48h, and no

obvious degradation and precipitation were observed. The loss rate is less than 5% within the expiration date under appropriate storage condition.

**[ IDENTIFICATION ]**

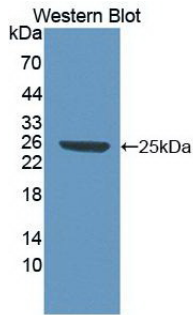
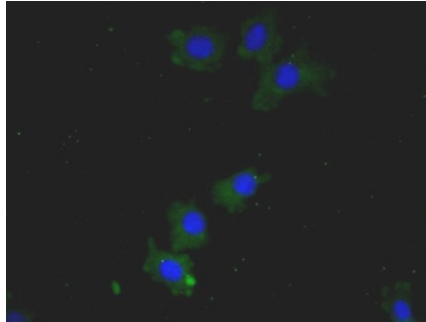


Figure. Western Blot; Sample: Recombinant HMG1, Human.



FITC staining on IF; Samples: Human HepG2 Cells; Primary Ab: 40µg/ml Mouse Anti-Human HMG1 Antibody Second Ab: 1µg/ml FITC-Linked Caprine Anti-Mouse IgG Polyclonal Antibody (Catalog: SAA544Mu18)

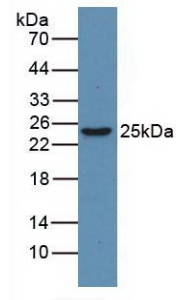
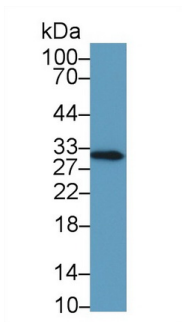
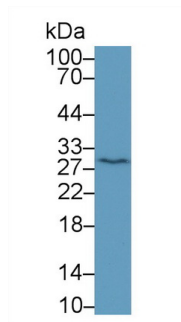


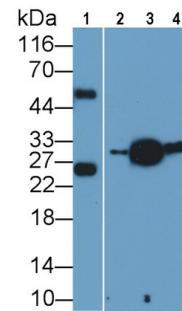
Figure. Western Blot Human Jurkat Cells Primary Ab: 3µg/mL Rabbit Anti-Human HMG1 Ab Second Ab: 1:5000 Dilution of HRP-Linked Rabbit Anti-Mouse IgG Ab (Catalog: SAA544Mu09)



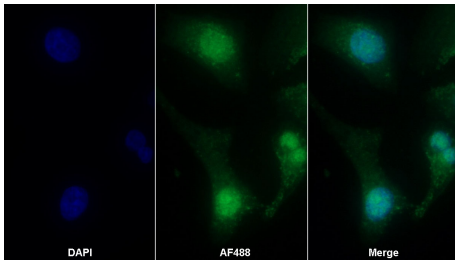
Western Blot; Sample: Human Lung lysate; Primary Ab: 2µg/ml Mouse Anti-Human HMG1 Antibody Second Ab: 0.2µg/mL HRP-Linked Caprine Anti-Mouse IgG Polyclonal Antibody (Catalog: SAA544Mu19)



Western Blot; Sample: Human HeLa cell lysate; Primary Ab: 2µg/ml Mouse Anti-Human HMG1 Antibody Second Ab: 0.2µg/mL HRP-Linked Caprine Anti-Mouse IgG Polyclonal Antibody (Catalog: SAA544Mu19)



Western Blot; Sample: Lane1: Rat Lung lysate; Lane2: Rat Cerebrum lysate; Lane3: Jurkat cell lysate; Lane4: HeLa cell lysate Primary Ab: 0.2µg/ml Mouse Anti-Human HMG1 Antibody Second Ab: 0.2µg/mL HRP-Linked Caprine Anti-Mouse IgG Polyclonal Antibody



AF488 staining on IF;

Sample: HeLa cell

Primary Ab: 30 $\mu$ g/ml Mouse Anti-  
Human HMGB1 Antibody

Second Ab: 2 $\mu$ g/ml AF488-Linked  
Caprine Anti-Mouse IgG Polyclonal  
Antibody

(Catalog: SAA544Mu11)

### [ **IMPORTANT NOTE** ]

The kit is designed for research use only, we will not be responsible for any issue if the kit was used in clinical diagnostic or any other procedures.