

MAC206Hu21

Monoclonal Antibody to Histone Deacetylase 1 (HDAC1)

Organism Species: *Homo sapiens (Human)*

Instruction manual

FOR RESEARCH USE ONLY

NOT FOR USE IN CLINICAL DIAGNOSTIC PROCEDURES

13th Edition (Revised in Aug, 2023)

[PROPERTIES]

Source: Monoclonal antibody preparation

Host: Mouse

Antibody isotype: IgG1 Kappa

Purification: Protein A + Protein G affinity chromatography

Clone number: E22

Traits: Liquid

Concentration: 1mg/mL

UOM: 100µL

Cross Reactivity: Rat;Bovine

Applications: WB; IHC; ICC; IP.

[IMMUNOGEN]

Immunogen: Recombinant HDAC1 (Met1~Ala482) expressed in *E.coli*

Accession No.: RPC206Hu01

[APPLICATIONS]

Western blotting: 0.01-2µg/mL

Immunohistochemistry: 5-20µg/mL

Immunocytochemistry: 5-20µg/mL

Optimal working dilutions must be determined by end user.

[FORMULATION]

Form & Buffer: Supplied as solution form in 0.01M PBS, pH7.4, containing 0.05% Proclin-300, 50% glycerol.

[STORAGE AND STABILITY]

Storage: Avoid repeated freeze/thaw cycles.

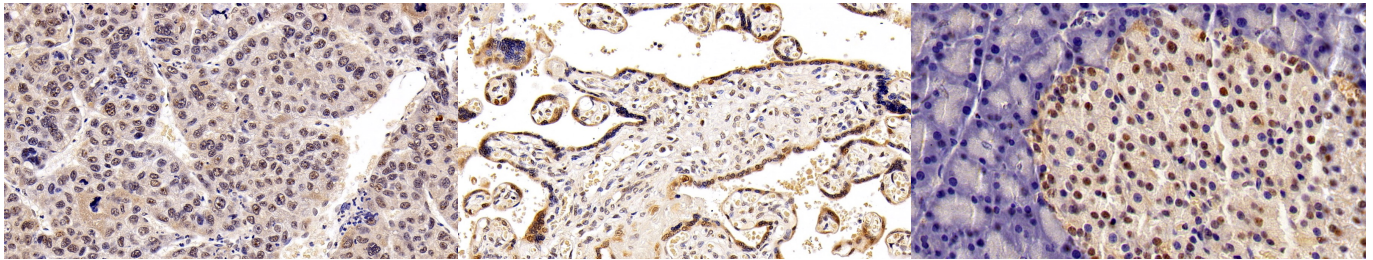
Store at 4°C for frequent use.

Aliquot and store at -20°C for 24 months.

Stability Test: The thermal stability is described by the loss rate. The loss rate was determined

by accelerated thermal degradation test, that is, incubate the protein at 37°C for 48h, and no obvious degradation and precipitation were observed. The loss rate is less than 5% within the expiration date under appropriate storage condition.

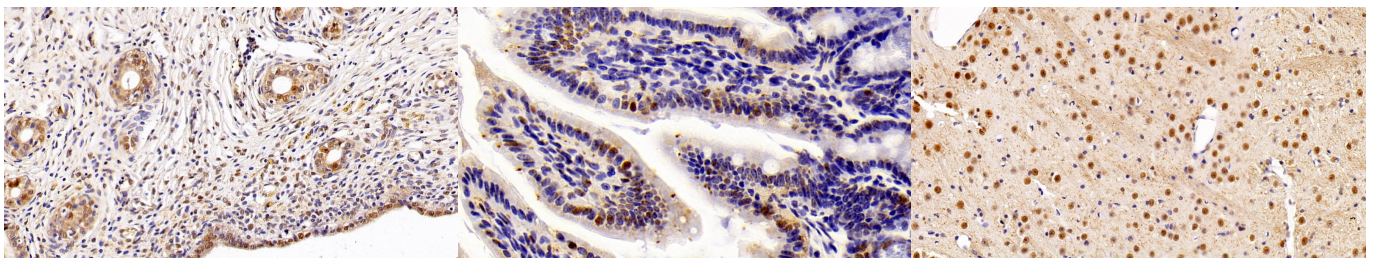
[IDENTIFICATION]



DAB staining on IHC-P;
 Sample: Human Liver cancer Tissue; Primary
 Ab: 10ug/ml Mouse Anti-Human
 HDAC1 Antibody Second Ab:
 2µg/mL HRP-Linked Caprine Anti-
 Mouse IgG Polyclonal Antibody
 (Catalog: SAA544Mu19)

DAB staining on IHC-P;
 Sample: Human Placenta Tissue;
 Primary Ab: 10ug/ml Mouse Anti-
 Human HDAC1 Antibody
 Second Ab: 2µg/mL HRP-Linked
 Caprine Anti-Mouse IgG Polyclonal
 Antibody
 (Catalog: SAA544Mu19)

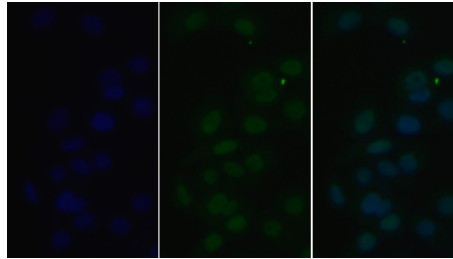
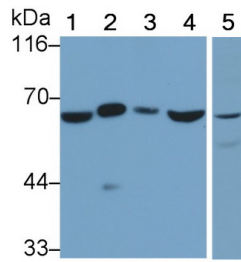
DAB staining on IHC-P;
 Sample: Rat Pancreas Tissue;
 Primary Ab: 10ug/ml Mouse Anti-
 Human HDAC1 Antibody
 Second Ab: 2µg/mL HRP-Linked
 Caprine Anti-Mouse IgG Polyclonal
 Antibody
 (Catalog: SAA544Mu19)



DAB staining on IHC-P;
 Sample: Rat Uterus Tissue;
 Primary Ab: 10ug/ml Mouse Anti-
 Human HDAC1 Antibody
 Second Ab: 2µg/mL HRP-Linked
 Caprine Anti-Mouse IgG Polyclonal
 Antibody
 (Catalog: SAA544Mu19)

DAB staining on IHC-P;
 Sample: Mouse Colon Tissue;
 Primary Ab: 10ug/ml Mouse Anti-
 Human HDAC1 Antibody
 Second Ab: 2µg/mL HRP-Linked
 Caprine Anti-Mouse IgG Polyclonal
 Antibody
 (Catalog: SAA544Mu19)

DAB staining on IHC-P;
 Sample: Mouse Cerebrum Tissue;
 Primary Ab: 10ug/ml Mouse Anti-
 Human HDAC1 Antibody
 Second Ab: 2µg/mL HRP-Linked
 Caprine Anti-Mouse IgG Polyclonal
 Antibody
 (Catalog: SAA544Mu19)



FITC staining on IF;

Western Blot; Sample: Lane1: Human Lung lysate; Lane2: A549 cell lysate; Lane3: HepG2 cell lysate; Lane4: Bovine Testis lysate; Lane5: Rat Testis lysate

Primary Ab: 0.2 μ g/ml Mouse Anti-Human HDAC1 Antibody

Second Ab: 0.2 μ g/mL HRP-Linked Rabbit Anti-Mouse IgG Polyclonal Antibody

(Catalog: SAA544Mu19)

Sample: Human HeLa cell;
Primary Ab: 20 μ g/ml Mouse Anti-Human HDAC1 Antibody
Second Ab: 4 μ g/ml FITC-Linked Caprine Anti-Mouse IgG Polyclonal Antibody

(Catalog: SAA544Mu18)

[**IMPORTANT NOTE**]

The kit is designed for research use only, we will not be responsible for any issue if the kit was used in clinical diagnostic or any other procedures.