

**MAA285Mi21**

**Monoclonal Antibody to Histone H3 (H3)**

**Organism Species: *Homo sapiens* (Human), *Mus musculus* (Mouse), *Rattus norvegicus* (Rat), *Canis familiaris*; Canine (Dog), *Bos taurus*; Bovine (Cattle)**

***Instruction manual***

FOR RESEARCH USE ONLY

NOT FOR USE IN CLINICAL DIAGNOSTIC PROCEDURES

---

13th Edition (Revised in Aug, 2023)

**[ PROPERTIES ]**

**Source:** Monoclonal antibody preparation

**Host:** Mouse

**Antibody isotype:** IgG1 Kappa

**Purification:** Protein A + Protein G affinity chromatography

**Clone number:** C4

**Traits:** Liquid

**Concentration:** 1mg/mL

**UOM:** 100 $\mu$ L

**Cross Reactivity:** N/A

**Applications:** WB; IHC; ICC; IP.

**[ IMMUNOGEN ]**

**Immunogen:** Recombinant Histone H3 (Met1~Ala136) expressed in *E.coli*

**Accession No.:** RPA285Mi01

**[ APPLICATIONS ]**

Western blotting: 0.01-2 $\mu$ g/mL

Immunohistochemistry: 2-20 $\mu$ g/mL

Immunocytochemistry: 2-20 $\mu$ g/mL

Optimal working dilutions must be determined by end user.

**[ FORMULATION ]**

**Form & Buffer:** Supplied as solution form in 0.01M PBS, pH7.4, containing 0.05% Proclin-300, 50% glycerol.

**[ STORAGE AND STABILITY ]**

**Storage:** Avoid repeated freeze/thaw cycles.

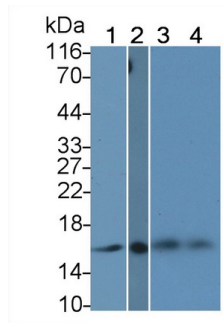
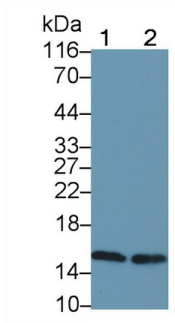
Store at 4°C for frequent use.

Aliquot and store at -20°C for 24 months.

**Stability Test:** The thermal stability is described by the loss rate. The loss rate was determined

by accelerated thermal degradation test, that is, incubate the protein at 37°C for 48h, and no obvious degradation and precipitation were observed. The loss rate is less than 5% within the expiration date under appropriate storage condition.

**[ IDENTIFICATION ]**



<p>Western Blot; Sample: Lane1: Human Placenta lysate; Lane2: U2OS cell lysate          Primary Ab: 0.2µg/ml Mouse Anti-Multi-species H3 Antibody          Second Ab: 0.2µg/mL HRP-Linked Caprine Anti-Mouse IgG Polyclonal Antibody          (Catalog: SAA544Mu19)</p>	<p>Western Blot; Sample: Lane1: Bovine Cerebrum lysate; Lane2: Rat Liver Cerebrum lysate; Lane3: Mouse Cerebrum lysate; Lane4: Canine Cerebrum lysate          Primary Ab: 0.2µg/ml Mouse Anti-Multi-species H3 Antibody          Second Ab: 0.2µg/mL HRP-Linked Caprine Anti-Mouse IgG Polyclonal Antibody          (Catalog: SAA544Mu19)</p>
---	--

**[ IMPORTANT NOTE ]**

The kit is designed for research use only, we will not be responsible for any issue if the kit was used in clinical diagnostic or any other procedures.