

MAB547Hu22

Monoclonal Antibody to Indoleamine-2,3-Dioxygenase (IDO)

Organism Species: *Homo sapiens* (Human)

Instruction manual

FOR RESEARCH USE ONLY

NOT FOR USE IN CLINICAL DIAGNOSTIC PROCEDURES

13th Edition (Revised in Aug, 2023)

[PROPERTIES]

Source: Monoclonal antibody preparation

Host: Mouse

Antibody isotype: IgG2b Kappa

Purification: Protein A + Protein G affinity chromatography

Clone number: C13

Traits: Liquid

Concentration: 1mg/mL

UOM: 100µL

Cross Reactivity: Rat

Applications: WB;ICC/IF;FCM

[IMMUNOGEN]

Immunogen: Recombinant IDO (Ala2~Gly403) expressed in *E.coli*

Accession No.: RPB547Hu01

[APPLICATIONS]

Western blotting: 0.01-2µg/mL;

Immunocytochemistry: 5-20µg/mL;

Flow cytometry: 10µg/mL;

Optimal working dilutions must be determined by end user.

[FORMULATION]

Form & Buffer: Supplied as solution form in PBS, pH7.4, containing 0.02% NaN₃, 50% glycerol.

[STORAGE AND STABILITY]

Storage: Avoid repeated freeze/thaw cycles.

Store at 4°C for frequent use.

Aliquot and store at -20°C for 24 months.

Stability Test: The thermal stability is described by the loss rate. The loss rate was determined

by accelerated thermal degradation test, that is, incubate the protein at 37°C for 48h, and no obvious degradation and precipitation were observed. The loss rate is less than 5% within the expiration date under appropriate storage condition.

[IDENTIFICATION]

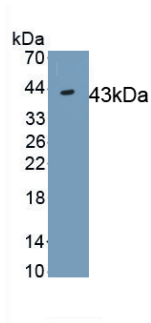
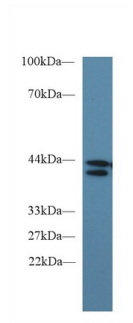
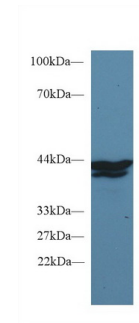


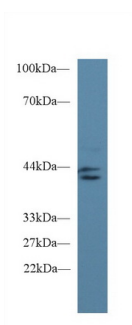
Figure. Western Blot; Sample: Recombinant IDO, Human.



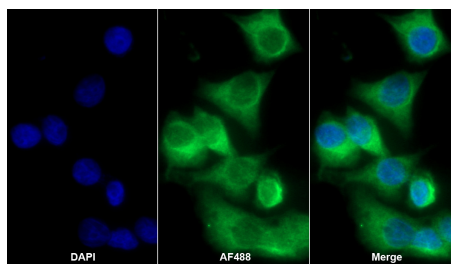
Western Blot; Sample: Human 293T cell lysate;
 Primary Ab: 2µg/ml Mouse Anti-Human IDO Antibody
 Second Ab: 0.2µg/mL HRP-Linked Caprine Anti-Mouse IgG Polyclonal Antibody
 (Catalog: SAA544Mu19)



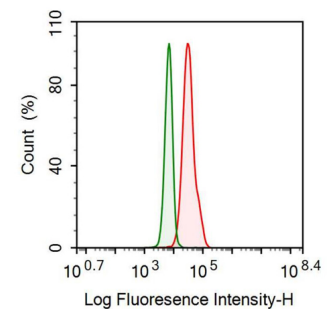
Western Blot; Sample: Human A431 cell lysate;
 Primary Ab: 2µg/ml Mouse Anti-Human IDO Antibody
 Second Ab: 0.2µg/mL HRP-Linked Caprine Anti-Mouse IgG Polyclonal Antibody
 (Catalog: SAA544Mu19)



Western Blot; Sample: Rat Placenta lysate;
 Primary Ab: 2µg/ml Mouse Anti-Human IDO Antibody
 Second Ab: 0.2µg/mL HRP-Linked Caprine Anti-Mouse IgG Polyclonal Antibody
 (Catalog: SAA544Mu19)



AF488 staining on IF;
 Sample: HeLa cell
 Primary Ab: 20µg/ml Mouse Anti-Human IDO Antibody
 Second Ab: 2µg/ml AF488-Linked Caprine Anti-Mouse IgG Polyclonal Antibody
 (Catalog: SAA544Mu11)



Human HeLa cell line was fixed with 2% paraformaldehyde (10 min) , permeabilised with 0.1% BSA-Triton X-100, then stained with 10µg/ml mouse Anti-human IDO Monoclonal Antibody (Catalog MAB547Hu22, red histogram) or Isotype control antibody (Catalog IS067-Mu01, green histogram),

followed by 1µg/ml FITC-conjugated
Anti-mouse IgG Secondary Antibody
(Catalog SAA544Mu18).

[IMPORTANT NOTE]

The kit is designed for research use only, we will not be responsible for any issue if the kit was used in clinical diagnostic or any other procedures.