

**MAC071Hu21****Monoclonal Antibody to Interferon Inducible T-Cell Alpha Chemoattractant (ITaC)****Organism Species: Homo sapiens (Human)*****Instruction manual***

FOR IN VITRO USE AND RESEARCH USE ONLY

NOT FOR USE IN CLINICAL DIAGNOSTIC PROCEDURES

10th Edition (Revised in Jan, 2014)

**[ PRODUCT INFORMATION ]****Immunogen:** ITaC, Human**Clonality:** Monoclonal**Clone number:** C1**Host:** Mouse**Immunoglobulin Type:** IgG1 Kappa**Purification:** Affinity Chromatography.**Applications:** WB, ICC, IHC-P, IHC-F, ELISA**Concentration:** 500µg/mL**UOM:** 200µg**[ IMMUNOGEN INFORMATION ]****Immunogen:** Recombinant ITaC (Phe22~Phe94) with Two N-terminal Tags, His-tag and T7-tag expressed in *E.coli*.**Accession No.:** RPC071Hu01**[ ANTIBODY SPECIFICITY ]**

The antibody is a mouse monoclonal antibody raised against ITaC. It has been selected for its ability to recognize ITaC in immunohistochemical staining and western blotting.

**[ APPLICATIONS ]**

Western blotting: 1:100-400

Immunocytochemistry in formalin fixed cells: 1:100-500

Immunohistochemistry in formalin fixed frozen section: 1:100-500

Immunohistochemistry in paraffin section: 1:50-200

Enzyme-linked Immunosorbent Assay: 1:100-200

Optimal working dilutions must be determined by end user.

## [ CONTENTS ]

**Form & Buffer:** Supplied as solution form in PBS, pH7.4, containing 0.02% NaN<sub>3</sub>, 50% glycerol.

## [ QUALITY CONTROL ]

**Content:** The quality control contains recombinant ITaC (Phe22~Phe94) disposed in loading buffer.

**Usage:** 10uL per well when 3,3'-Diaminobenzidine(DAB) as the substrate.  
5uL per well when used in enhanced chemiluminescent (ECL).

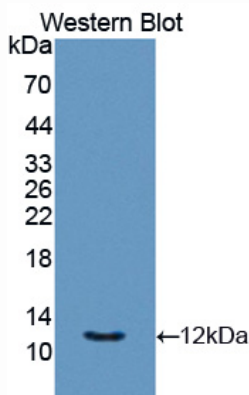
**Note:** The quality control is specifically manufactured as the positive control. Not used for other purposes.

**Loading Buffer:** 100mM Tris(pH8.8), 2% SDS, 200mM NaCl, 50% glycerol, BPB 0.01%, NaN<sub>3</sub> 0.02%.

## [ STORAGE ]

Store at 4°C for frequent use. Stored at -20°C to -80°C in a manual defrost freezer for one year without detectable loss of activity. Avoid repeated freeze-thaw cycles.

## [ IMAGES ]



**Used in Western Blot, Sample:**

**Recombinant ITaC, Human**