

**MAC008Hu27**

**Monoclonal Antibody to Interleukin 35 (IL35)**

**Organism Species: *Homo sapiens* (Human)**

***Instruction manual***

FOR RESEARCH USE ONLY

NOT FOR USE IN CLINICAL DIAGNOSTIC PROCEDURES

---

13th Edition (Revised in Aug, 2023)

**[ PROPERTIES ]**

**Source:** Monoclonal antibody preparation

**Host:** Mouse

**Antibody isotype:** IgG1 Kappa

**Purification:** Protein A + Protein G affinity chromatography

**Clone number:** C5

**Traits:** Liquid

**Concentration:** 1mg/ml

**UOM:** 100µl

**Cross Reactivity:** N/A

**Applications:** WB; IHC; ICC; IP.

**[ IMMUNOGEN ]**

**Immunogen:** Recombinant IL35 (The IL35 complex composed of IL27B subunit (Arg21-Lys229) and the mature form of human IL12A (Arg23-Ser219) linked by a polypeptide linker (GGGGS)<sub>3</sub> expressed in *E.coli*

**Accession No.:** RPC008Hu01

**[ APPLICATIONS ]**

Western blotting: 0.01-2µg/mL;

Immunohistochemistry: 5-20µg/mL;

Immunocytochemistry: 5-20µg/mL;

Optimal working dilutions must be determined by end user.

**[ FORMULATION ]**

**Form & Buffer:** Supplied as solution form in PBS, pH7.4, containing 0.02% NaN<sub>3</sub>, 50% glycerol.

**[ QUALITY CONTROL ]**

**Content:** The quality control contains recombinant IL35 disposed in loading buffer.

**Usage:** 10uL per well when 3,3'-Diaminobenzidine(DAB) as the substrate.

5uL per well when used in enhanced chemiluminescent (ECL).

**Note:** The quality control is specifically manufactured as the positive control. Not used for other purposes.

**Loading Buffer:** 100mM Tris (pH6.8), 1% SDS, 150mM NaCl, 50% glycerol, 0.02% BPB, 50mM DTT and 0.02% NaN<sub>3</sub>.

### **[ STORAGE AND STABILITY ]**

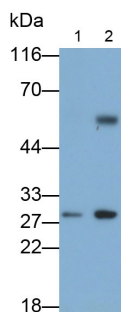
**Storage:** Avoid repeated freeze/thaw cycles.

Store at 4°C for frequent use.

Aliquot and store at -20°C for 24 months.

**Stability Test:** The thermal stability is described by the loss rate. The loss rate was determined by accelerated thermal degradation test, that is, incubate the protein at 37°C for 48h, and no obvious degradation and precipitation were observed. The loss rate is less than 5% within the expiration date under appropriate storage condition.

### **[ IDENTIFICATION ]**



Western Blot; Samples: Lane1: Rat  
Stomach lysate; Lane2: Rat Placenta  
lysate;

Primary Ab: 0.1µg/ml Mouse Anti-  
Human IL35 Antibody

Second Ab: 0.2µg/ml HRP-Linked  
Caprine Anti-Mouse IgG Polyclonal  
Antibody

(Catalog: SAA544Mu19)

**[ IMPORTANT NOTE ]**

The kit is designed for research use only, we will not be responsible for any issue if the kit was used in clinical diagnostic or any other procedures.