

**MAE748Hu21**

**Monoclonal Antibody to Karyopherin Alpha 2 (KPNa2)**

**Organism Species: *Homo sapiens (Human)***

***Instruction manual***

FOR RESEARCH USE ONLY

NOT FOR USE IN CLINICAL DIAGNOSTIC PROCEDURES

---

13th Edition (Revised in Aug, 2023)

**[ PROPERTIES ]**

**Source:** Monoclonal antibody preparation

**Host:** Mouse

**Antibody isotype:** IgG1 Kappa

**Purification:** Protein A + Protein G affinity chromatography

**Clone number:** C10

**Traits:** Liquid

**Concentration:** 1mg/mL

**UOM:** 100 $\mu$ L

**Cross Reactivity:** N/A

**Applications:** WB; ICC/IF;FCM

**[ IMMUNOGEN ]**

**Immunogen:** Recombinant KPNa2 (Ala157~Gln412) expressed in *E.coli*

**Accession No.:** RPE748Hu01

**[ APPLICATIONS ]**

Western blotting: 0.01-3 $\mu$ g/mL;

Immunocytochemistry: 5-30 $\mu$ g/mL;

Flow cytometry: 10 $\mu$ g/ml;

Optimal working dilutions must be determined by end user.

**[ FORMULATION ]**

**Form & Buffer:** Supplied as solution form in 0.01M PBS, pH7.4, containing 0.05% Proclin-300, 50% glycerol.

**[ STORAGE AND STABILITY ]**

**Storage:** Avoid repeated freeze/thaw cycles.

Store at 4°C for frequent use.

Aliquot and store at -20°C for 24 months.

**Stability Test:** The thermal stability is described by the loss rate. The loss rate was determined

by accelerated thermal degradation test, that is, incubate the protein at 37°C for 48h, and no obvious degradation and precipitation were observed. The loss rate is less than 5% within the expiration date under appropriate storage condition.

**[ IDENTIFICATION ]**

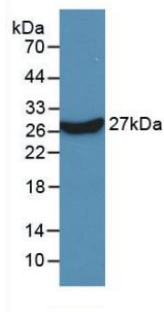
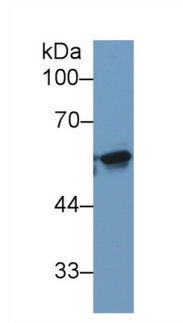
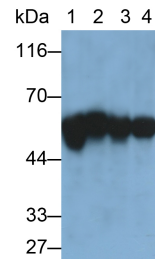


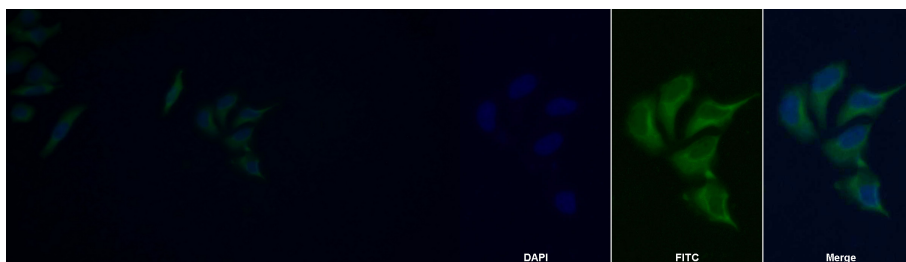
Figure. Western Blot; Sample: Recombinant KPNa2, Human.



Western Blot; Sample: Human 293T cell lysate;  
 Primary Ab: 2µg/ml Mouse Anti-Human Raji cell lysate;  
 KPNa2 Antibody  
 Second Ab: 0.2µg/mL HRP-Linked Caprine Anti-Mouse IgG Polyclonal Antibody  
 (Catalog: SAA544Mu19)

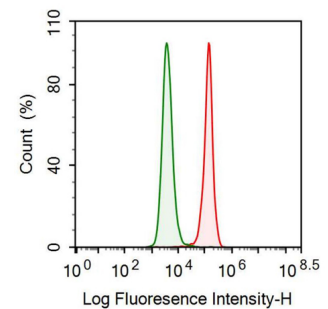


Western Blot; Sample: Lane1: 293T cell lysate; Lane2: HeLa cell lysate; Lane3: Raji cell lysate; Lane4: U2OS cell lysate  
 Primary Ab: 0.4µg/ml Mouse Anti-Human KPNa2 Antibody  
 Second Ab: 0.2µg/mL HRP-Linked Caprine Anti-Mouse IgG Polyclonal Antibody  
 (Catalog: SAA544Mu19)



FITC staining on IF;  
 Samples: Human HepG2 cell;  
 Primary Ab: 20µg/ml Mouse Anti-Human KPNa2 Antibody  
 Second Ab: 1µg/ml FITC-Linked Caprine Anti-Mouse IgG Polyclonal Antibody  
 (Catalog: SAA544Mu18)

FITC staining on IF;  
 Sample: HepG2 cell  
 Primary Ab: 20µg/ml Mouse Anti-Human KPNa2 Antibody  
 Second Ab: 2µg/ml FITC-Linked Caprine Anti-Mouse IgG Polyclonal Antibody  
 (Catalog: SAA544Mu11)



Human A549 cell line was fixed with 2% paraformaldehyde (10 min) , permeabilised with 0.1% BSA-Triton X-100, then stained with 10µg/ml mouse Anti-human KPNa2 Monoclonal Antibody (Catalog MAE748Hu21, red histogram) or Isotype control antibody

(Catalog IS067-Mu01, green histogram), followed by 1µg/ml FITC-conjugated Anti-mouse IgG Secondary Antibody (Catalog SAA544Mu18).

**[ IMPORTANT NOTE ]**

The kit is designed for research use only, we will not be responsible for any issue if the kit was used in clinical diagnostic or any other procedures.