

MAG531Hu21

Monoclonal Antibody to Lysophosphatidylcholine Acyltransferase 3 (LPCAT3)

Organism Species: *Homo sapiens (Human)*

Instruction manual

FOR RESEARCH USE ONLY

NOT FOR USE IN CLINICAL DIAGNOSTIC PROCEDURES

13th Edition (Revised in Aug, 2023)

[PROPERTIES]

Source: Monoclonal antibody preparation

Host: Mouse

Antibody isotype: IgG2a Kappa

Purification: Protein A + Protein G affinity chromatography

Clone number: 6-2#

Traits: Liquid

Concentration: 1mg/mL

UOM: 100 μ L

Cross Reactivity: Porcine

Applications: WB

[IMMUNOGEN]

Immunogen: Recombinant LPCAT3 (Met122~Arg233) expressed in *E.coli*

Accession No.: RPG531Hu01

[APPLICATIONS]

Western blotting: 0.01-5 μ g/mL;

Optimal working dilutions must be determined by end user.

[FORMULATION]

Form & Buffer: Supplied as solution form in 0.01M PBS, pH7.4, containing 0.05% Proclin-300, 50% glycerol.

[STORAGE AND STABILITY]

Storage: Avoid repeated freeze/thaw cycles.

Store at 4°C for frequent use.

Aliquot and store at -20°C for 24 months.

Stability Test: The thermal stability is described by the loss rate. The loss rate was determined by accelerated thermal degradation test, that is, incubate the protein at 37°C for 48h, and no obvious degradation and precipitation were observed. The loss rate is less than 5% within the

expiration date under appropriate storage condition.

[IDENTIFICATION]

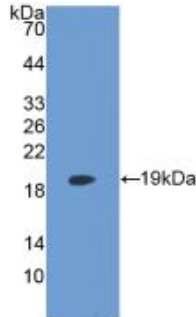
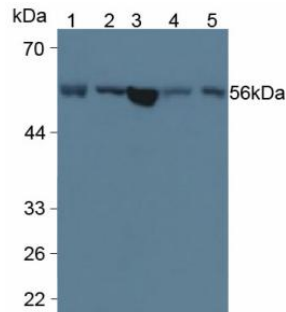


Figure. Western Blot; Sample:
Recombinant LPCAT3, Human.



Western Blot; Sample: Lane1: Human Serum; Lane2: Porcine Liver Tissue; Lane3: Human Liver Tissue; Lane4: Porcine Pancreas Tissue; Lane5: Porcine Kidney Tissue
Primary Ab: 5µg/ml Mouse Anti-Human LPCAT3 Antibody
Second Ab: 0.2µg/mL HRP-Linked Caprine Anti-Mouse IgG Polyclonal Antibody
(Catalog: SAA544Mu19) Selected

[IMPORTANT NOTE]

The kit is designed for research use only, we will not be responsible for any issue if the kit was used in clinical diagnostic or any other procedures.