

MAA591Hu21

Monoclonal Antibody to Proliferating Cell Nuclear Antigen (PCNA)

Organism Species: *Homo sapiens* (Human)

Instruction manual

FOR RESEARCH USE ONLY

NOT FOR USE IN CLINICAL DIAGNOSTIC PROCEDURES

13th Edition (Revised in Aug, 2023)

[PROPERTIES]

Source: Monoclonal antibody preparation

Host: Mouse

Antibody isotype: IgG1 Kappa

Purification: Protein A + Protein G affinity chromatography

Clone number: C3

Traits: Liquid

Concentration: 1mg/mL

UOM: 100µL

Cross Reactivity: Cavia; Porcine; Bovine; Caprine;Ovine; Equine.

Applications: WB; IHC; ICC; IP.

[IMMUNOGEN]

Immunogen: Recombinant PCNA (Leu6~Ser261) expressed in *E.coli*

Accession No.: RPA591Hu01

[APPLICATIONS]

Western blotting: 0.01-2µg/mL;

Immunohistochemistry: 5-20µg/mL;

Immunocytochemistry: 5-20µg/mL;

Optimal working dilutions must be determined by end user.

[FORMULATION]

Form & Buffer: Supplied as solution form in 0.01M PBS, pH7.4, containing 0.05% Proclin-300, 50% glycerol.

[STORAGE AND STABILITY]

Storage: Avoid repeated freeze/thaw cycles.

Store at 4°C for frequent use.

Aliquot and store at -20°C for 24 months.

Stability Test: The thermal stability is described by the loss rate. The loss rate was determined

by accelerated thermal degradation test, that is, incubate the protein at 37°C for 48h, and no obvious degradation and precipitation were observed. The loss rate is less than 5% within the expiration date under appropriate storage condition.

[IDENTIFICATION]

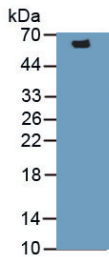
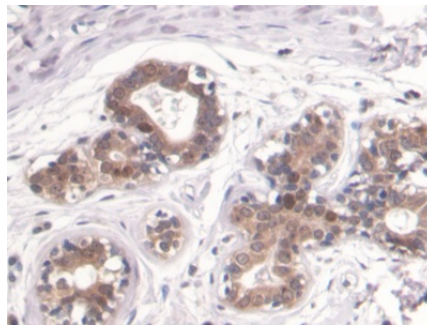
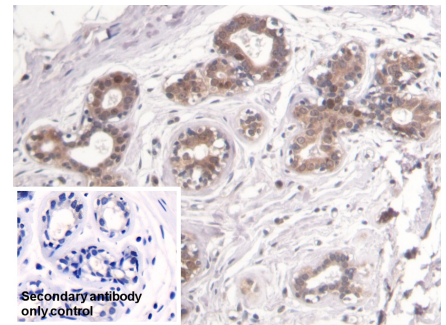


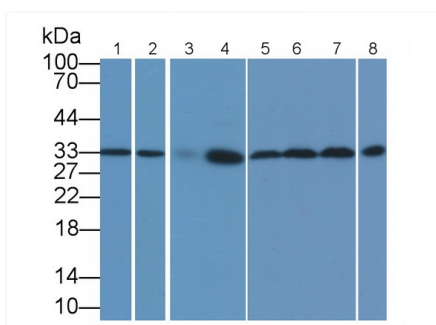
Figure. Western Blot; Sample: Recombinant PCNA.



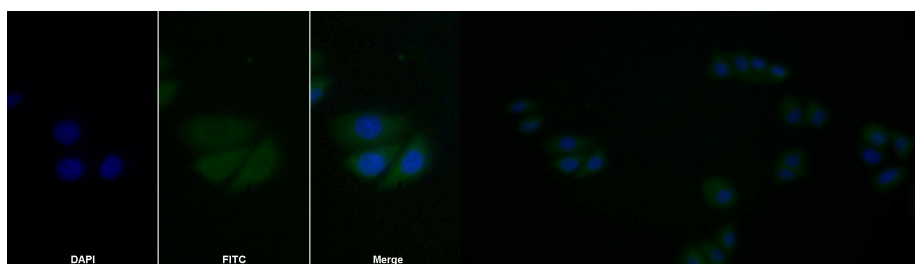
DAB staining on IHC-P; Sample: Human Breast cancer Tissue; Primary Ab: 20µg/ml Mouse Anti-Human PCNA Antibody Second Ab: 2µg/mL HRP-Linked Caprine Anti-Mouse IgG Polyclonal Antibody (Catalog: SAA544Mu19)



DAB staining on IHC-P; Sample: Human Breast cancer Tissue Primary Ab: 20µg/ml Mouse Anti-Human PCNA Antibody Control: Used PBS instead of primary antibody Second Ab: 2µg/ml HRP-Linked Caprine Anti-Mouse IgG Polyclonal Antibody (Catalog: SAA544Mu19)



Western Blot Sample: Lane1: Porcine Kidney lysate; Lane2: Bovine Testis lysate; Lane3: Caprine Lung lysate; Lane4: Caprine Testis lysate; Lane5: Cavia Lung lysate; Lane6: Cavia Colon lysate; Lane7: Cavia Thymus lysate;



FITC staining on IF; Sample: MCF7 cell Primary Ab: 20µg/ml Mouse Anti-Human PCNA Antibody Second Ab: 2µg/ml FITC-Linked Caprine Anti-Mouse IgG Polyclonal Antibody

FITC staining on IF; Samples: Human MCF7 cell; Primary Ab: 20?g/ml Mouse Anti-Human PCNA Antibody Second Ab: 0.75?g/ml FITC-Linked Caprine Anti-Mouse IgG Polyclonal Antibody

Lane8: Equine Liver lysate

(Catalog: SAA544Mu11)

(Catalog: SAA544Mu18)

Primary Ab: 1?g/ml Mouse Anti-Human

PCNA Antibody

Second Ab: 0.2µg/mL HRP-Linked

Caprine Anti-Mouse IgG Polyclonal

Antibody

(Catalog: SAA544Mu19)

[IMPORTANT NOTE]

The kit is designed for research use only, we will not be responsible for any issue if the kit was used in clinical diagnostic or any other procedures.