



MAA591Mi22

Monoclonal Antibody to Proliferating Cell Nuclear Antigen (PCNA)

Organism Species: Homo sapiens (Human), Mus musculus (Mouse), Rattus norvegicus (Rat), Oryctolagus cuniculus (Rabbit), Canis familiaris; Canine (Dog), Sus scrofa; Porcine (Pig)

Instruction manual

FOR IN VITRO USE AND RESEARCH USE ONLY
NOT FOR USE IN CLINICAL DIAGNOSTIC PROCEDURES

13th Edition (Revised in Aug, 2023)

[PROPERTIES]

Source: Monoclonal antibody preparation

Host: Mouse

Antibody isotype: IgG2b Kappa

Purification: Protein A + Protein G affinity chromatography

Clone number: C7

Traits: Liquid

Concentration: 1mg/mL

UOM: 100µl

Cross Reactivity: Cavia; Bovine; Caprine; Ovine; Equine; Gallus

Applications: WB; IHC; ICC; IP.

[IMMUNOGEN]

Immunogen: Recombinant PCNA (Leu6~Ser261) expressed in *E.coli*.

Accession No.: RPA591Mi01

[APPLICATIONS]

Western blotting: 0.01-2µg/mL;

Immunohistochemistry: 5-20µg/mL;

Immunofluorescence: 5-20µg/mL;

Optimal working dilutions must be determined by end user.

[FORMULATION]

Form & Buffer: Supplied as solution form in 0.01M PBS, pH7.4, containing 0.02% NaN₃, 50% glycerol.

[STORAGE AND STABILITY]

Storage: Avoid repeated freeze/thaw cycles.

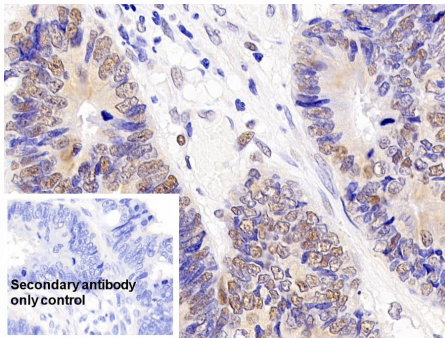
Store at 4°C for frequent use.

Aliquot and store at -20°C for 24 months.

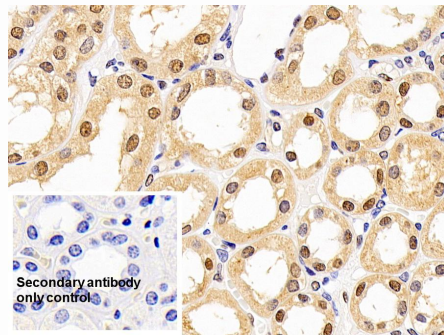
Stability Test: The thermal stability is described by the loss rate. The loss rate was determined by accelerated thermal degradation test, that is, incubate the

protein at 37°C for 48h, and no obvious degradation and precipitation were observed. The loss rate is less than 5% within the expiration date under appropriate storage condition.

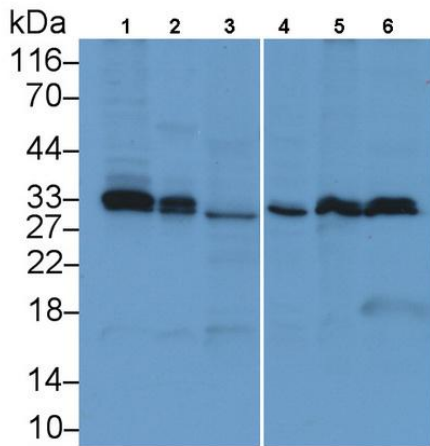
[**IDENTIFICATION**]



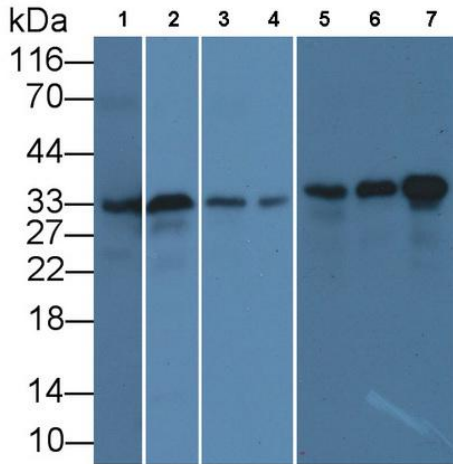
DAB staining on IHC-P;
Sample: Human Colorectal cancer Tissue
Primary Ab: 10µg/ml Mouse
Anti-Multi-species PCNA Antibody
Control: Used PBS instead of primary
antibody
Second Ab: 2µg/ml HRP-Linked Caprine
Anti-Mouse IgG Polyclonal Antibody
(Catalog: SAA544Mu19)



DAB staining on IHC-P;
Sample: Human Kidney Tissue
Primary Ab: 10µg/ml Mouse
Anti-Multi-species PCNA Antibody
Control: Used PBS instead of primary
antibody
Second Ab: 2µg/ml HRP-Linked Caprine
Anti-Mouse IgG Polyclonal Antibody
(Catalog: SAA544Mu19)



Western Blot; Sample: Lane1: Canine Cerebrum lysate; Lane2: Porcine Cerebrum lysate; Lane3: Bovine Cerebrum lysate; Lane4: Gallus Cerebrum lysate; Lane5: Equine Liver lysate; Lane6: Caprine Cerebrum lysate
 Primary Ab: 1µg/ml Mouse Anti-Multi-species PCNA Antibody
 Second Ab: 0.2µg/mL HRP-Linked Caprine Anti-Mouse IgG Polyclonal Antibody
 (Catalog: SAA544Mu19)



Western Blot; Sample: Lane1: Mouse Liver lysate; Lane2: Mouse Spleen lysate; Lane3: Mouse Testis lysate; Lane4: Mouse Small intestine lysate; Lane5: Mouse Lymph node lysate; Lane6: Mouse Ovary lysate; Lane7: Mouse Thymus lysate
 Primary Ab: 0.5µg/ml Mouse Anti-Multi-species PCNA Antibody
 Second Ab: 0.2µg/mL HRP-Linked Caprine Anti-Mouse IgG Polyclonal Antibody
 (Catalog: SAA544Mu19)

[**Important Note**]

The kit is designed for in vitro and research use only, we will not be responsible for any issue if the kit was used in clinical diagnostic or any other procedures.