

MAA591Mi23

Monoclonal Antibody to Proliferating Cell Nuclear Antigen (PCNA)

**Organism Species: *Homo sapiens* (Human), *Mus musculus* (Mouse), *Rattus norvegicus*
(Rat), *Sus scrofa*; Porcine (Pig)**

Instruction manual

FOR RESEARCH USE ONLY

NOT FOR USE IN CLINICAL DIAGNOSTIC PROCEDURES

13th Edition (Revised in Aug, 2023)

[PROPERTIES]

Source: Monoclonal antibody preparation

Host: Mouse

Antibody isotype: IgG1 Kappa

Purification: Protein A + Protein G affinity chromatography

Clone number: C8

Traits: Liquid

Concentration: 1mg/mL

UOM: 100µL

Cross Reactivity: Canine;Caprine;Ovine;Gallus

Applications: WB; IHC; ICC; IP.

[IMMUNOGEN]

Immunogen: Recombinant PCNA (Leu6~Ser261) expressed in *E.coli*

Accession No.: RPA591Mi01

[APPLICATIONS]

Western blotting: 0.01-3µg/mL;

Immunohistochemistry: 5-30µg/mL;

Immunocytochemistry: 5-30µg/mL;

Optimal working dilutions must be determined by end user.

[FORMULATION]

Form & Buffer: Supplied as solution form in PBS, pH7.4, containing 0.02% NaN₃, 50% glycerol.

[STORAGE AND STABILITY]

Storage: Avoid repeated freeze/thaw cycles.

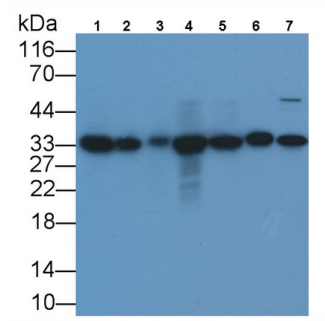
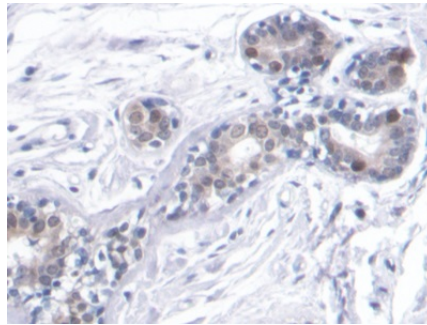
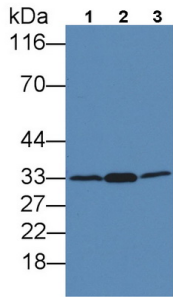
Store at 4°C for frequent use.

Aliquot and store at -20°C for 24 months.

Stability Test: The thermal stability is described by the loss rate. The loss rate was determined

by accelerated thermal degradation test, that is, incubate the protein at 37°C for 48h, and no obvious degradation and precipitation were observed. The loss rate is less than 5% within the expiration date under appropriate storage condition.

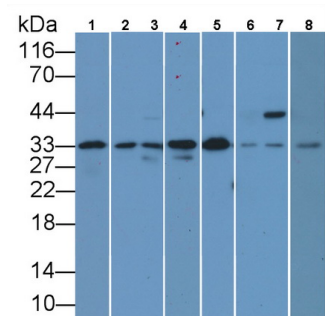
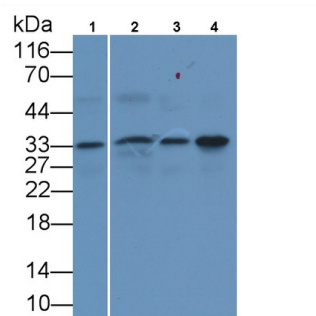
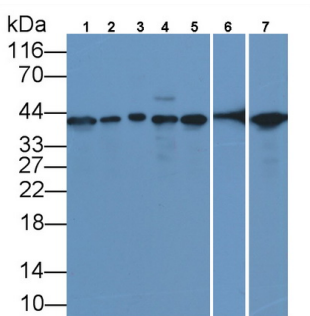
[IDENTIFICATION]



Western Blot; Sample: Lane1: Mouse Testis lysate; Lane2: Jurkat cell lysate; Lane3: Rat Testis lysate
 Primary Ab: 3µg/ml Mouse Anti-Multi-species PCNA Antibody
 Second Ab: 0.2µg/mL HRP-Linked Caprine Anti-Mouse IgG Polyclonal Antibody (Catalog: SAA544Mu19)

DAB staining on IHC-P; Sample: Human Breast cancer Tissue; Primary Ab: 20µg/ml Mouse Anti-Multi-species PCNA Antibody
 Second Ab: 2µg/mL HRP-Linked Caprine Anti-Mouse IgG Polyclonal Antibody (Catalog: SAA544Mu19)

Western Blot; Sample: Lane1: A549 cell lysate; Lane2: 293T cell lysate; Lane3: A875 cell lysate; Lane4: HepG2 cell lysate; Lane5: Hela cell lysate; Lane6: YAC1 cell lysate; Lane7: MCF7 cell lysate
 Primary Ab: 1µg/ml Mouse Anti-Multi-species PCNA Antibody
 Second Ab: 0.2µg/mL HRP-Linked Caprine Anti-Mouse IgG Polyclonal Antibody (Catalog: SAA544Mu19)



Western Blot; Sample: Lane1: Sp2/0 cell lysate; Lane2: SGC7901 cell lysate; Lane3: ECV304 cell lysate; Lane4: PC3 cell lysate; Lane5: A375 cell lysate;

Western Blot; Sample: Lane1: Mouse Small intestine lysate; Lane2: Mouse Lymph node lysate; Lane3: Mouse Ovary lysate; Lane4: Mouse Thymus

Western Blot; Sample: Lane1: Rat Spleen lysate; Lane2: Porcine Heart lysate; Lane3: Porcine Liver lysate; Lane4: Porcine Spleen lysate; Lane5:

Lane6: A431 cell lysate; Lane7: Jurkat cell lysate	lysate	Cavia Spleen lysate; Lane6: Caprine Heart lysate; Lane7: Caprine Liver lysate; Lane8: Gallus Cerebrum lysate
Primary Ab: 1µg/ml Mouse Anti-Multi-species PCNA Antibody	Primary Ab: 1µg/ml Mouse Anti-Multi-species PCNA Antibody	Primary Ab: 1µg/ml Mouse Anti-Multi-species PCNA Antibody
Second Ab: 0.2µg/mL HRP-Linked Caprine Anti-Mouse IgG Polyclonal Antibody	Second Ab: 0.2µg/mL HRP-Linked Caprine Anti-Mouse IgG Polyclonal Antibody	Second Ab: 0.2µg/mL HRP-Linked Caprine Anti-Mouse IgG Polyclonal Antibody
(Catalog: SAA544Mu19)	(Catalog: SAA544Mu19)	(Catalog: SAA544Mu19)

[**IMPORTANT NOTE**]

The kit is designed for research use only, we will not be responsible for any issue if the kit was used in clinical diagnostic or any other procedures.