

**MAB769Ra21**

**Monoclonal Antibody to S100 Calcium Binding Protein A6 (S100A6)**

**Organism Species: Rattus norvegicus (Rat)**

***Instruction manual***

FOR IN VITRO USE AND RESEARCH USE ONLY  
NOT FOR USE IN CLINICAL DIAGNOSTIC PROCEDURES

9th Edition (Revised in Jul, 2013)

## **[ PRODUCT INFORMATION ]**

**Immunogen:** S100A6, Rat

**Clonality:** Monoclonal

**Clone number:** A6

**Host:** Mouse

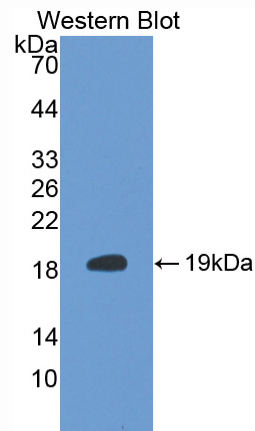
**Immunoglobulin Type:** IgG

**Purification:** Affinity Chromatography.

**Applications:** WB, ICC, IHC-P, IHC-F, ELISA

**Concentration:** 500µg/mL

**UOM:** 200µg



*Sample: Recombinant S100A6, Rat*

## **[ IMMUNOGEN INFORMATION ]**

**Immunogen:** Recombinant S100A6 (Met1~Lys89) expressed in *E.coli*.

**Accession No.:** RPB769Ra01

**Sequence:** The target protein is fused with N-terminal His-Tag and its sequence is listed below.

MGHHHHHSGS-MACPLDQAIG LLVAIFHKYS GKEGDKHTLS KKELKELIQK ELTIGAKLQD  
AEIARLMDDL DRNKDQEVNF QEYVAFLGAL ALIYNEALK

## **[ ANTIBODY SPECIFICITY ]**

The antibody is a mouse monoclonal antibody raised against S100A6. It has been selected for its ability to recognize S100A6 in immunohistochemical staining and western blotting.

## **[ APPLICATIONS ]**

Western blotting: 1:100-400

Immunocytochemistry in formalin fixed cells: 1:100-500

Immunohistochemistry in formalin fixed frozen section: 1:100-500

Immunohistochemistry in paraffin section: 1:50-200

Enzyme-linked Immunosorbent Assay: 1:100-200

Optimal working dilutions must be determined by end user.

## **[ CONTENTS ]**

**Form & Buffer:** Supplied as solution form in PBS, pH7.4, containing 0.02% NaN<sub>3</sub>, 50% glycerol.

## **[ STORAGE ]**

Store at 4°C for frequent use. Stored at -20°C to -80°C in a manual defrost freezer for one year without detectable loss of activity. Avoid repeated freeze-thaw cycles.