

mA92842Hu22
Monoclonal Antibody to Secreted Frizzled Related Protein 5 (SFRP5)
Organism: Homo sapiens (Human)
Instruction manual

FOR IN VITRO USE AND RESEARCH USE ONLY
NOT FOR USE IN CLINICAL DIAGNOSTIC PROCEDURES

7th Edition (Revised in May, 2013)

[PRODUCT INFORMATION]

Immunogen: SFRP5, Human

Clonality: Monoclonal

Host: Mouse

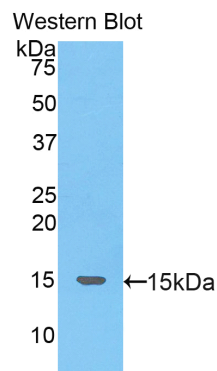
Immunoglobulin Type: IgG

Purification: Affinity Chromatography.

Applications: WB, ICC, IHC-P, IHC-F, ELISA

Concentration: 500µg/mL

UOM: 200µg



Sample: Recombinant SFRP5, Human

[IMMUNOGEN INFORMATION]

Immunogen: Recombinant SFRP5 (Ser48~Val165) expressed in *E.coli*.

USCN Accession No.: rP92842Hu01

Sequence: The target protein is fused with N-terminal His-Tag and its sequence is listed below.

MGHHHHHSGSEF- SKP PQCLDIPADL PLCHTVGYKR MRLPNLLEHE SLAEVKQQAS
SWLPLLAKRC HSDTQVFLCS LFAPVCLDRP IYPCRSLEA VRAGCAPLME AYGFWPPEML
HCHKFPLDND LCIIV

Unique product Superb quality Client favorite Nicest service  ISO9001:2008;  ISO13485:2003; 

[ANTIBODY SPECIFICITY]

The antibody is a mouse monoclonal antibody raised against SFRP5. It has been selected for its ability to recognize SFRP5 in immunohistochemical staining and western blotting.

[APPLICATIONS]

Western blotting: 1:100-400

Immunocytochemistry in formalin fixed cells: 1:100-500

Immunohistochemistry in formalin fixed frozen section: 1:100-500

Immunohistochemistry in paraffin section: 1:50-200

Enzyme-linked Immunosorbent Assay: 1:100-200

Optimal working dilutions must be determined by end user.

[CONTENTS]

Form & Buffer: Supplied as solution form in PBS, pH7.4, containing 0.02% NaN₃, 50% glycerol.

[STORAGE]

Store at 4°C for frequent use. Stored at -20°C to -80°C in a manual defrost freezer for one year without detectable loss of activity. Avoid repeated freeze-thaw cycles.