

MAA885Hu23

Monoclonal Antibody to Serum Amyloid A (SAA)

Organism Species: *Homo sapiens (Human)*

Instruction manual

FOR RESEARCH USE ONLY

NOT FOR USE IN CLINICAL DIAGNOSTIC PROCEDURES

13th Edition (Revised in Aug, 2023)

[PROPERTIES]

Source: Monoclonal antibody preparation

Host: Mouse

Antibody isotype: IgG2a Kappa

Purification: Protein A + Protein G affinity chromatography

Clone number: D5

Traits: Liquid

Concentration: 1mg/ml

UOM: 100µl

Cross Reactivity: N/A

Applications: WB; IHC

[IMMUNOGEN]

Immunogen: Recombinant SAA (Arg19~Tyr122) expressed in *E.coli*

Accession No.: RPA885Hu01

[APPLICATIONS]

Western blotting: 0.01-2µg/mL

Immunohistochemistry: 5-40µg/mL

Optimal working dilutions must be determined by end user.

[FORMULATION]

Form & Buffer: Supplied as solution form in 0.01M PBS, pH7.4, containing 0.05% Proclin-300, 50% glycerol.

[STORAGE AND STABILITY]

Storage: Avoid repeated freeze/thaw cycles.

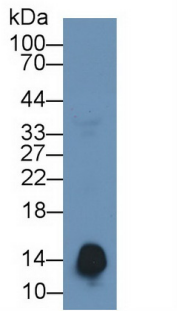
Store at 4°C for frequent use.

Aliquot and store at -20°C for 24 months.

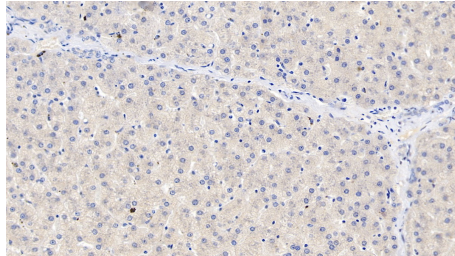
Stability Test: The thermal stability is described by the loss rate. The loss rate was determined by accelerated thermal degradation test, that is, incubate the protein at 37°C for 48h, and no

obvious degradation and precipitation were observed. The loss rate is less than 5% within the expiration date under appropriate storage condition.

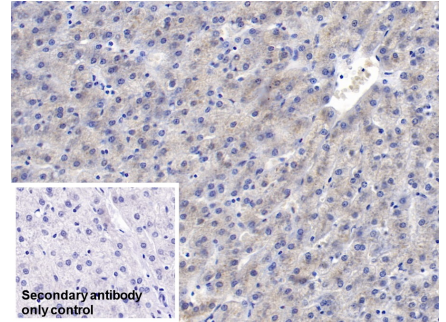
[IDENTIFICATION]



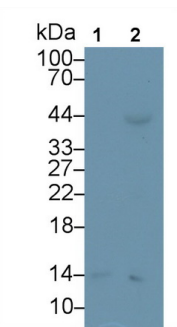
Western Blot; Sample: Human Serum;
 Primary Ab: 2µg/ml Mouse Anti-Human
 SAA Antibody Second Ab:
 0.2µg/mL HRP-Linked Caprine Anti-
 Mouse IgG Polyclonal Antibody
 (Catalog: SAA544Mu19)



DAB staining on IHC-P; Sample:
 Human Liver Tissue; Primary Ab:
 10µg/ml Mouse Anti-Human SAA
 Antibody Second Ab: 2µg/mL HRP-
 Linked Caprine Anti-Mouse IgG
 Polyclonal Antibody (Catalog:
 SAA544Mu19)



DAB staining on IHC-P;
 Sample: Human Liver Tissue
 Primary Ab: 40µg/ml Mouse Anti-
 Human SAA Antibody
 Control: Used PBS instead of primary
 antibody
 Second Ab: 2µg/ml HRP-Linked
 Caprine Anti-Mouse IgG Polyclonal
 Antibody
 (Catalog: SAA544Mu19)



Western Blot; Sample: Lane1: Human
 Saliva; Lane2: Human Plasma
 Primary Ab: 2µg/ml Mouse Anti-Human
 SAA Antibody
 Second Ab: 0.2µg/mL HRP-Linked
 Caprine Anti-Mouse IgG Polyclonal
 Antibody

(Catalog: SAA544Mu19)

[IMPORTANT NOTE]

The kit is designed for research use only, we will not be responsible for any issue if the kit was used in clinical diagnostic or any other procedures.