

**MAD922Hu21**

**Monoclonal Antibody to Sialic Acid Binding Ig Like Lectin 9 (SIGLEC9)**

**Organism Species: Homo sapiens (Human)**

***Instruction manual***

FOR IN VITRO USE AND RESEARCH USE ONLY  
NOT FOR USE IN CLINICAL DIAGNOSTIC PROCEDURES

9th Edition (Revised in Jul, 2013)

## **[ PRODUCT INFORMATION ]**

**Immunogen:** SIGLEC9, Human

**Clonality:** Monoclonal

**Host:** Mouse

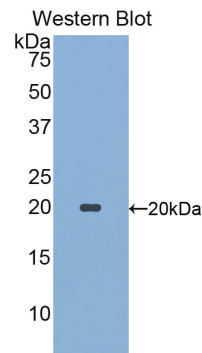
**Immunoglobulin Type:** IgG

**Purification:** Affinity Chromatography.

**Applications:** WB, ICC, IHC-P, IHC-F, ELISA

**Concentration:** 500µg/mL

**UOM:** 200µg



*Sample: Recombinant SIGLEC9, Human*

## **[ IMMUNOGEN INFORMATION ]**

**Immunogen:** Recombinant SIGLEC9 (Leu23~Leu142) expressed in *E. coli*.

**USCN Accession No.:** RPD922Hu01

**Sequence:** The target protein is fused with two N-terminal Tags, His-tag and S-tag and its sequence is listed below.

MHHHHHSSG LVPRGSGMKE TAAKFERQH MDSPDLGTDD DDKAMADIGS EF-  
LTMQSSVT VQEGLCVHVP CSFSYPSHGWF YPGPVVHGY WFREGANTDQ DAPVATNPA  
RAVWEETRDR FHLLGDPHTK NCTLSIRDAR RSDAGRYFFR MEKGSIKWNY  
KHHRLSVNVT AL

## **[ ANTIBODY SPECIFICITY ]**

The antibody is a mouse monoclonal antibody raised against SIGLEC9. It has been selected for its ability to recognize SIGLEC9 in immunohistochemical staining and western blotting.

## **[ APPLICATIONS ]**

Western blotting: 1:100-400

Immunocytochemistry in formalin fixed cells: 1:100-500

Immunohistochemistry in formalin fixed frozen section: 1:100-500

Immunohistochemistry in paraffin section: 1:50-200

Enzyme-linked Immunosorbent Assay: 1:100-200

Optimal working dilutions must be determined by end user.

## **[ CONTENTS ]**

**Form & Buffer:** Supplied as solution form in PBS, pH7.4, containing 0.02% NaN<sub>3</sub>, 50% glycerol.

## **[ STORAGE ]**

Store at 4°C for frequent use. Stored at -20°C to -80°C in a manual defrost freezer for one year without detectable loss of activity. Avoid repeated freeze-thaw cycles.