

MAB743Mi22

Monoclonal Antibody to Signal Transducer And Activator Of Transcription 3 (STAT3)

Organism Species: *Homo sapiens (Human)*, *Mus musculus (Mouse)*, *Rattus norvegicus (Rat)*

Instruction manual

FOR RESEARCH USE ONLY

NOT FOR USE IN CLINICAL DIAGNOSTIC PROCEDURES

13th Edition (Revised in Aug, 2023)

[PROPERTIES]

Source: Monoclonal antibody preparation

Host: Mouse

Antibody isotype: IgG1 Kappa

Purification: Protein A + Protein G affinity chromatography

Clone number: D11

Traits: Liquid

Concentration: 1mg/ml

UOM: 100µl

Cross Reactivity: N/A

Applications: WB; IHC; ICC; IP.

[IMMUNOGEN]

Immunogen: Recombinant STAT3 (Ala135~Gln279) expressed in *E.coli*

Accession No.: RPB743Mi03

[APPLICATIONS]

Western blotting: 0.01-2µg/mL;

Immunohistochemistry: 5-20µg/mL;

Immunocytochemistry: 5-20µg/mL;

Optimal working dilutions must be determined by end user.

[FORMULATION]

Form & Buffer: Supplied as solution form in PBS, pH7.4, containing 0.02% NaN₃, 50% glycerol.

[STORAGE AND STABILITY]

Storage: Avoid repeated freeze/thaw cycles.

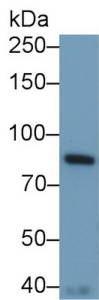
Store at 4°C for frequent use.

Aliquot and store at -20°C for 24 months.

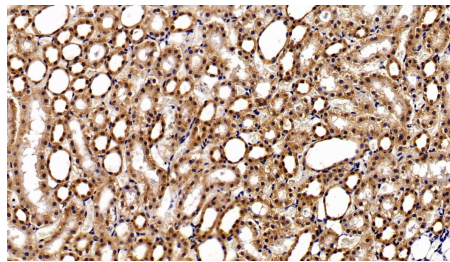
Stability Test: The thermal stability is described by the loss rate. The loss rate was determined

by accelerated thermal degradation test, that is, incubate the protein at 37°C for 48h, and no obvious degradation and precipitation were observed. The loss rate is less than 5% within the expiration date under appropriate storage condition.

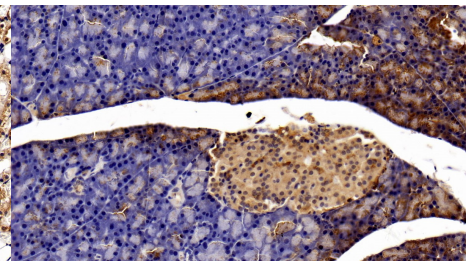
[IDENTIFICATION]



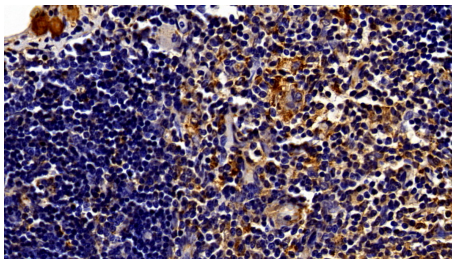
Western Blot; Sample: Rat Heart Lysate
 Primary Ab: 1µg/ml Mouse Anti-Multi-species STAT3 Antibody
 Second Ab: 0.2µg/mL HRP-Linked Caprine Anti-Mouse IgG Polyclonal Antibody
 (Catalog: SAA544Mu19)



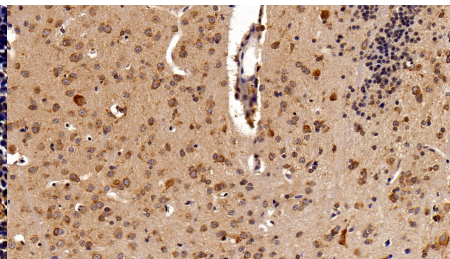
DAB staining on IHC-P; Sample: Rat Kidney Tissue; Primary Ab: 20µg/ml Mouse Anti-Multi-species STAT3 Antibody
 Second Ab: 2µg/mL HRP-Linked Caprine Anti-Mouse IgG Polyclonal Antibody (Catalog: SAA544Mu19)



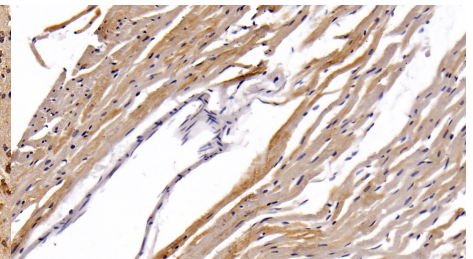
DAB staining on IHC-P; Sample: Rat Pancreas Tissue; Primary Ab: 20µg/ml Mouse Anti-Multi-species STAT3 Antibody
 Second Ab: 2µg/mL HRP-Linked Caprine Anti-Mouse IgG Polyclonal Antibody (Catalog: SAA544Mu19)



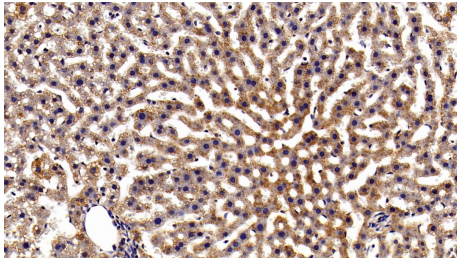
DAB staining on IHC-P; Sample: Rat Thymus Tissue; Primary Ab: 20µg/ml Mouse Anti-Multi-species STAT3 Antibody
 Second Ab: 2µg/mL HRP-Linked Caprine Anti-Mouse IgG Polyclonal Antibody (Catalog: SAA544Mu19)



DAB staining on IHC-P; Sample: Rat Cerebrum Tissue; Primary Ab: 20µg/ml Mouse Anti-Multi-species STAT3 Antibody
 Second Ab: 2µg/mL HRP-Linked Caprine Anti-Mouse IgG Polyclonal Antibody (Catalog: SAA544Mu19)



DAB staining on IHC-P; Sample: Rat Cardiac Muscle Tissue; Primary Ab: 20µg/ml Mouse Anti-Multi-species STAT3 Antibody
 Second Ab: 2µg/mL HRP-Linked Caprine Anti-Mouse IgG Polyclonal Antibody (Catalog: SAA544Mu19)



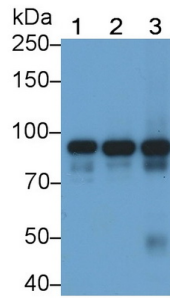
DAB staining on IHC-P;

Sample: Rat Liver Tissue;

Primary Ab: 20µg/ml Mouse Anti-Multi-species STAT3 Antibody

Second Ab: 2µg/mL HRP-Linked Caprine Anti-Mouse IgG Polyclonal Antibody

(Catalog: SAA544Mu19)



Western Blot; Sample: Lane1: HeLa cell lysate; Lane2: Human Lung lysate; Lane3: Mouse Thymus lysate

Primary Ab: 0.2µg/ml Mouse Anti-Multi-species STAT3 Antibody

Second Ab: 0.2µg/mL HRP-Linked Caprine Anti-Mouse IgG Polyclonal Antibody

(Catalog: SAA544Mu19)

[IMPORTANT NOTE]

The kit is designed for research use only, we will not be responsible for any issue if the kit was used in clinical diagnostic or any other procedures.