

**MAK523Ge21**

**Monoclonal Antibody to Sunset Yellow (SY)**

**Organism Species: *Pan-species (General)***

***Instruction manual***

FOR RESEARCH USE ONLY

NOT FOR USE IN CLINICAL DIAGNOSTIC PROCEDURES

---

13th Edition (Revised in Aug, 2023)

**[ PROPERTIES ]**

**Source:** Monoclonal antibody preparation

**Host:** Mouse

**Antibody isotype:** IgG1 Kappa

**Purification:** Protein A + Protein G affinity chromatography

**Clone number:** C3

**Traits:** Liquid

**Concentration:** 1mg/mL

**UOM:** 1mg(1mL)

**Cross Reactivity:** N/A

**Applications:** ELISA, CLIA. / IHC-Fr, ICC, IP (predicted).

**[ IMMUNOGEN ]**

**Immunogen:** Small Molecule, Sunset Yellow conjugated to OVA.

**Accession No.:** CPK523Ge21

**[ APPLICATIONS ]**

Immunohistochemistry: 5-20 $\mu$ g/mL;

Immunocytochemistry: 5-20 $\mu$ g/mL;

Optimal working dilutions must be determined by end user.

**[ FORMULATION ]**

**Form & Buffer:** Supplied as solution form in 0.01M PBS, pH7.4, containing 0.05% Proclin-300, 50% glycerol.

**[ STORAGE AND STABILITY ]**

**Storage:** Avoid repeated freeze/thaw cycles.

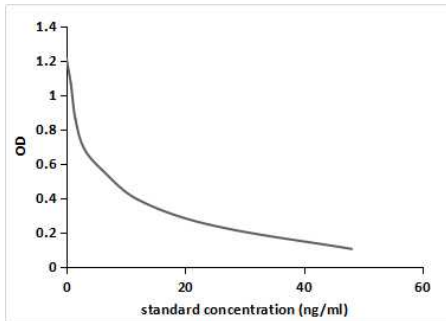
Store at 4°C for frequent use.

Aliquot and store at -20°C for 24 months.

**Stability Test:** The thermal stability is described by the loss rate. The loss rate was determined by accelerated thermal degradation test, that is, incubate the protein at 37°C for 48h, and no

obvious degradation and precipitation were observed. The loss rate is less than 5% within the expiration date under appropriate storage condition.

### [ IDENTIFICATION ]



competitive inhibition ELISA;

Coated protein: SY conjugated to BSA

(Catalog:CPK523Ge11);

Standard:Series Diluted SY;

Primary Ab: 0.61µg/ml Mouse Anti SY

Antibody;

Second Ab: 2µg/mL HRP-Linked

Caprine Anti-mouse IgG

PolyclonalAntibody

(Catalog: SAA544Rb19)

IC50=3ng/ml

### [ IMPORTANT NOTE ]

The kit is designed for research use only, we will not be responsible for any issue if the kit was used in clinical diagnostic or any other procedures.