

**MAB703Hu25**

**Monoclonal Antibody to TATA Binding Protein (TBP)**

**Organism Species: *Homo sapiens (Human)***

***Instruction manual***

FOR RESEARCH USE ONLY

NOT FOR USE IN CLINICAL DIAGNOSTIC PROCEDURES

---

12th Edition (Revised in Aug, 2016)

**[ PROPERTIES ]**

**Source:** Monoclonal antibody preparation

**Host:** Mouse

**Antibody isotype:** IgG2a Kappa

**Purification:** Protein A + Protein G affinity chromatography

**Clone number:** C6

**Traits:** Liquid

**Concentration:** 1mg/ml

**UOM:** 100µl

**Cross Reactivity:** Mouse;Cavia;Porcine;Bovine;Caprine;Ovine

**Applications:** WB; IHC; ICC; IP.

**[ IMMUNOGEN ]**

**Immunogen:** Recombinant TBP (Ile25~Thr339) expressed in *E.coli*

**Accession No.:** RPB703Hu01

**[ APPLICATIONS ]**

Western blotting: 0.5-2µg/mL;

Immunohistochemistry: 5-20µg/mL;

Immunocytochemistry: 5-20µg/mL;

Optimal working dilutions must be determined by end user.

**[ FORMULATION ]**

**Form & Buffer:** Supplied as solution form in 0.01M PBS, pH7.4, containing 0.05% Proclin-300, 50% glycerol.

**[ STORAGE AND STABILITY ]**

**Storage:** Avoid repeated freeze/thaw cycles.

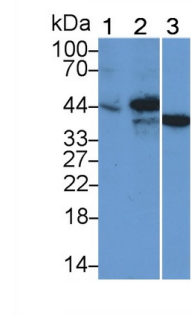
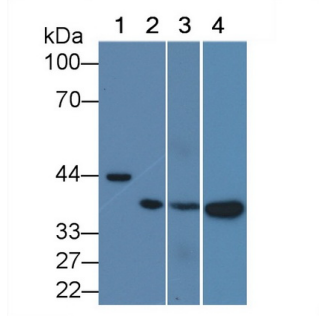
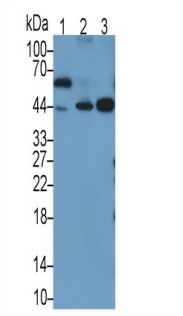
Store at 4°C for frequent use.

Aliquot and store at -20°C for 24 months.

**Stability Test:** The thermal stability is described by the loss rate. The loss rate was determined

by accelerated thermal degradation test, that is, incubate the protein at 37°C for 48h, and no obvious degradation and precipitation were observed. The loss rate is less than 5% within the expiration date under appropriate storage condition.

**[ IDENTIFICATION ]**



<p>Western Blot; Sample: Lane1: Porcine Liver lysate; Lane2: Hela cell lysate; Lane3: 293T cell lysate</p> <p>Primary Ab: 1µg/ml Mouse Anti-Human TBP Antibody</p> <p>Second Ab: 0.2µg/mL HRP-Linked Caprine Anti-Mouse IgG Polyclonal Antibody (Catalog: SAA544Mu19)</p>	<p>Western Blot; Sample: Lane1: 293T cell lysate; Lane2: Cavia Testis lysate; Lane3: Mouse Testis lysate; Lane4: Rat Testis lysate</p> <p>Primary Ab: 1µg/ml Mouse Anti-Human TBP Antibody</p> <p>Second Ab: 0.2µg/mL HRP-Linked Caprine Anti-Mouse IgG Polyclonal Antibody (Catalog: SAA544Mu19)</p>	<p>Western Blot; Sample: Lane1: Porcine Kidney lysate; Lane2: Bovine Kidney lysate; Lane3: Caprine Kidney lysate</p> <p>Primary Ab: 1µg/ml Mouse Anti-Human TBP Antibody</p> <p>Second Ab: 0.2µg/mL HRP-Linked Caprine Anti-Mouse IgG Polyclonal Antibody (Catalog: SAA544Mu19)</p>
---	---	---

**[ IMPORTANT NOTE ]**

The kit is designed for research use only, we will not be responsible for any issue if the kit was used in clinical diagnostic or any other procedures.