

MAA702Hu21

Monoclonal Antibody to Thioredoxin (Trx)

Organism Species: *Homo sapiens (Human)*

Instruction manual

FOR RESEARCH USE ONLY

NOT FOR USE IN CLINICAL DIAGNOSTIC PROCEDURES

13th Edition (Revised in Aug, 2023)

[PROPERTIES]

Source: Monoclonal antibody preparation

Host: Mouse

Antibody isotype: IgG1 Kappa

Purification: Protein A + Protein G affinity chromatography

Clone number: C3

Traits: Liquid

Concentration: 1mg/ml

UOM: 100ul

Cross Reactivity: N/A

Applications: WB; IF.

[IMMUNOGEN]

Immunogen: Recombinant Trx (Met1~Val105) expressed in *E.coli*

Accession No.: RPA702Hu01

[APPLICATIONS]

Western blotting: 0.01-2µg/mL;

Immunofluorescence:5-20µg/mL;

Optimal working dilutions must be determined by end user.

[FORMULATION]

Form & Buffer: Supplied as solution form in 0.01M PBS, pH7.4, containing 0.05% Proclin-300, 50% glycerol.

[STORAGE AND STABILITY]

Storage: Avoid repeated freeze/thaw cycles.

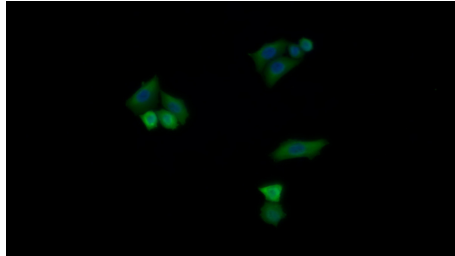
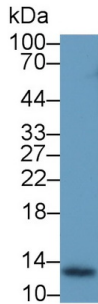
Store at 4°C for frequent use.

Aliquot and store at -20°C for 24 months.

Stability Test: The thermal stability is described by the loss rate. The loss rate was determined by accelerated thermal degradation test, that is, incubate the protein at 37°C for 48h, and no

obvious degradation and precipitation were observed. The loss rate is less than 5% within the expiration date under appropriate storage condition.

[IDENTIFICATION]



FITC staining on IF; Samples: Human

Western Blot; Sample: MCF7 cell lysate	MCF7 cell; Primary Ab: 20?g/ml Mouse
Primary Ab: 2?g/ml Mouse Anti-Human	Anti-Human Trx Antibody Second Ab:
Trx Antibody Second Ab: 0.2µg/mL	1?g/ml FITC-Linked Caprine Anti-
HRP-Linked Caprine Anti-Mouse IgG	Mouse IgG Polyclonal Antibody
Polyclonal Antibody (Catalog:	(Catalog: SAA544Mu18)
SAA544Mu19)	

[IMPORTANT NOTE]

The kit is designed for research use only, we will not be responsible for any issue if the kit was used in clinical diagnostic or any other procedures.