

MAC823Hu22

Monoclonal Antibody to Thymidine Kinase 1, Soluble (TK1)

Organism Species: *Homo sapiens (Human)*

Instruction manual

FOR RESEARCH USE ONLY

NOT FOR USE IN CLINICAL DIAGNOSTIC PROCEDURES

13th Edition (Revised in Aug, 2023)

[PROPERTIES]

Source: Monoclonal antibody preparation

Host: Mouse

Antibody isotype: IgG2b Kappa

Purification: Protein A + Protein G affinity chromatography

Clone number: C3

Traits: Liquid

Concentration: 1mg/mL

UOM: 100µL

Cross Reactivity: Porcine

Applications: WB, ICC/IF

[IMMUNOGEN]

Immunogen: Recombinant TK1 (Ser2~Asn234) expressed in *E.coli*

Accession No.: RPC823Hu01

[APPLICATIONS]

Western blotting: 0.01-6µg/mL;

Immunocytochemistry: 5-20µg/mL;

Optimal working dilutions must be determined by end user.

[FORMULATION]

Form & Buffer: Supplied as solution form in 0.01M PBS, pH7.4, containing 0.05% Proclin-300, 50% glycerol.

[STORAGE AND STABILITY]

Storage: Avoid repeated freeze/thaw cycles.

Store at 4°C for frequent use.

Aliquot and store at -20°C for 24 months.

Stability Test: The thermal stability is described by the loss rate. The loss rate was determined by accelerated thermal degradation test, that is, incubate the protein at 37°C for 48h, and no

obvious degradation and precipitation were observed. The loss rate is less than 5% within the expiration date under appropriate storage condition.

[IDENTIFICATION]

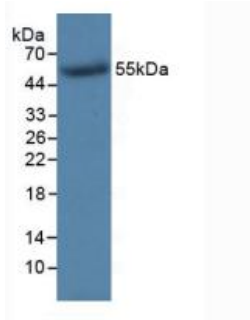
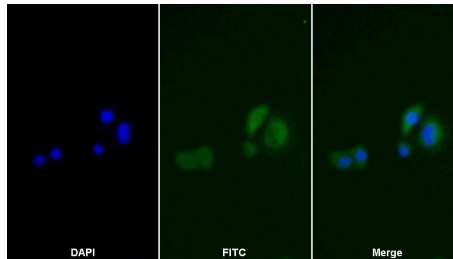
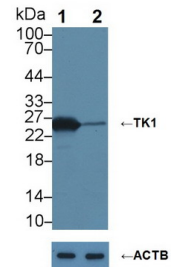


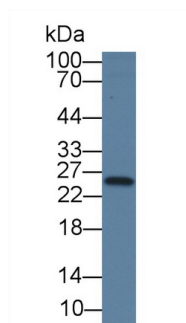
Figure. Western Blot; Sample: Recombinant TK1, Human.



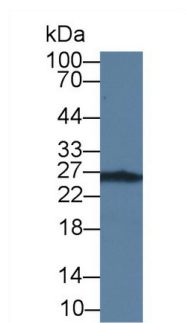
FITC staining on IF; Samples: Human MCF7 cell; Primary Ab: 20µg/ml Mouse Anti-Human TK1 Antibody Second Ab: 1µg/ml FITC-Linked Caprine Anti-Mouse IgG Polyclonal Antibody (Catalog: SAA544Mu18)



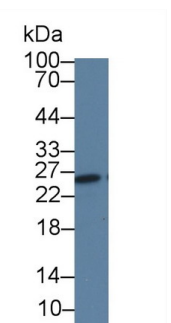
Knockout Varification:
Lane 1: Wild-type MCF7 cell lysate;
Lane 2: TK1 knockout MCF7 cell lysate;
Predicted MW: 25kDa
Observed MW: 25kDa
Primary Ab: 6µg/ml Mouse Anti-Human TK1 Antibody
Second Ab: 0.2µg/mL HRP-Linked Caprine Anti-Mouse IgG Polyclonal Antibody (Catalog: SAA544Mu19)



Western Blot; Sample: HeLa cell lysate
Primary Ab: 6µg/ml Mouse Anti-Human TK1 Antibody
Second Ab: 0.2µg/mL HRP-Linked Caprine Anti-Mouse IgG Polyclonal Antibody



Western Blot; Sample: MCF7 cell lysate
Primary Ab: 6µg/ml Mouse Anti-Human TK1 Antibody
Second Ab: 0.2µg/mL HRP-Linked Caprine Anti-Mouse IgG Polyclonal Antibody

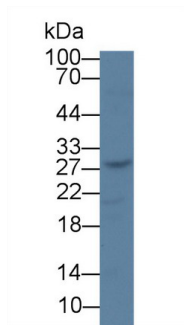


Western Blot; Sample: 293T cell lysate
Primary Ab: 6µg/ml Mouse Anti-Human TK1 Antibody
Second Ab: 0.2µg/mL HRP-Linked Caprine Anti-Mouse IgG Polyclonal Antibody

(Catalog: SAA544Mu19) Selected

(Catalog: SAA544Mu19) Selected

(Catalog: SAA544Mu19) Selected



Western Blot; Sample: Porcine Lymph
node lysate

Primary Ab: 6µg/ml Mouse Anti-Human
TK1 Antibody

Second Ab: 0.2µg/mL HRP-Linked
Caprine Anti-Mouse IgG Polyclonal
Antibody

(Catalog: SAA544Mu19) Selected

[**IMPORTANT NOTE**]

The kit is designed for research use only, we will not be responsible for any issue if the kit was used in clinical diagnostic or any other procedures.