

**NPB028Po01 50µg**

**Native Albumin (ALB)**

**Organism Species: *Sus scrofa*; Porcine (Pig)**

***Instruction manual***

FOR RESEARCH USE ONLY

NOT FOR USE IN CLINICAL DIAGNOSTIC PROCEDURES

---

---

11th Edition (Revised in May, 2016)

## **[ PROPERTIES ]**

**Source:** Natural Extract

**Host:** Porcine (Serum)

**Tissue Specificity:** Serum.

**Subcellular Location:** Secreted.

**Purity:** >95% as determined by SDS-PAGE.

**Purification Methods:** Salt co-precipitation and Isoelectric Point Co-precipitation.

**Traits:** Freeze-dried powder

**Buffer Formulation:** 20mM Tris, 150mM NaCl, pH8.0, containing 0.01% sarcosyl, 5%Trehalose.

**Original Concentration:** 200ug/mL

**Applications:** SDS-PAGE; WB; ELISA; IP; CoIP; EMSA; Reporter Assays; Purification; Activity Assays; Amine Reactive Labeling.

(May be suitable for use in other assays to be determined by the end user.)

**Predicted isoelectric point:** 6.1

**Accurate Molecular Mass:** 69.7kDa

**Observe Molecular Mass:** 69kDa

## [ USAGE ]

Reconstitute in 20mM Tris, 150mM NaCl (pH8.0) to a concentration of 0.1-1.0 mg/mL. Do not vortex.

## [ STORAGE AND STABILITY ]

**Storage:** Avoid repeated freeze/thaw cycles.

Store at 2-8°C for one month.

Aliquot and store at -80°C for 12 months.

**Stability Test:** The thermal stability is described by the loss rate. The loss rate was determined by accelerated thermal degradation test, that is, incubate the protein at 37°C for 48h, and no obvious degradation and precipitation were observed. The loss rate is less than 5% within the expiration date under appropriate storage condition.

## [ IDENTIFICATION ]

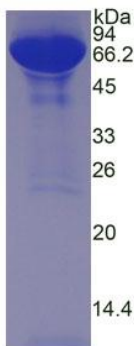


Figure 1. SDS-PAGE

## [ IMPORTANT NOTE ]

The kit is designed for research use only, we will not be responsible for any issue if the kit was used in clinical diagnostic or any other procedures.