



NPA544Rb01 10 μ g
Native Immunoglobulin G (IgG)
Organism Species: *Oryctolagus cuniculus* (Rabbit)
Instruction manual

FOR IN VITRO USE AND RESEARCH USE ONLY
NOT FOR USE IN CLINICAL DIAGNOSTIC PROCEDURES

12th Edition (Revised in Aug, 2016)

[PROPERTIES]

Source: Natural Extract

Host: Rabbit (Serum)

Tissue Specificity: Serum.

Subcellular Location: Secreted.

Purity: >90% as determined by SDS-PAGE.

Purification Methods: Salt co-precipitation and ionic-Exchange chromatography.

Traits: Freeze-dried powder

Buffer Formulation: 20mM Tris, 150mM NaCl, pH8.0, containing 5%Trehalose .

Original Concentration: 200µg/mL

Applications: Positive Control; Immunogen; SDS-PAGE; WB.

(May be suitable for use in other assays to be determined by the end user.)

Predicted isoelectric point: 8.0

Accurate Molecular Mass: 25&55kDa

Observe Molecular Mass: 25&55kDa

[USAGE]

Reconstitute in 20mM Tris, 150mM NaCl (pH8.0) to a concentration of 0.1-1.0 mg/mL. Do not vortex.

[STORAGE AND STABILITY]

Storage: Avoid repeated freeze/thaw cycles.

Store at 2-8°C for one month.

Aliquot and store at -80°C for 12 months.

Stability Test: The thermal stability is described by the loss rate. The loss rate was determined by accelerated thermal degradation test, that is, incubate the protein at 37°C for 48h, and no obvious degradation and precipitation were observed. The loss rate is less than 5% within the expiration date under appropriate storage condition.

[**IDENTIFICATION**]

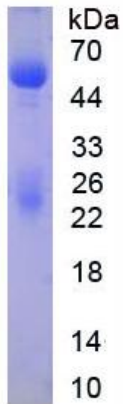


Figure 1. SDS-PAGE