



*Cloud-Clone Corp.*

**CPA365Hu21 100µg**  
**OVA Conjugated Copeptin (CPP)**  
**Organism Species: *Homo sapiens* (Human)**  
***Instruction manual***

FOR RESEARCH USE ONLY  
NOT FOR USE IN CLINICAL DIAGNOSTIC PROCEDURES

---

---

12th Edition (Revised in Aug, 2016)



## **[ PROPERTIES ]**

**Source:** Protein Conjugation

**Original Peptide Residues:** Asp128-Leu144

**Purity:** >90%

**Traits:** Freeze-dried powder.

**Buffer formulation:** 10mM PBS, pH7.4.

**Applications:** Immunogen; SDS-PAGE.

## **[ USAGE ]**

Reconstitute in 10mM PBS (pH7.4) to a concentration of 0.1-1.0 mg/mL. Do not vortex.

## **[ STORAGE AND STABILITY ]**

**Storage:** Avoid repeated freeze/thaw cycles.

Store at 2-8°C for one month.

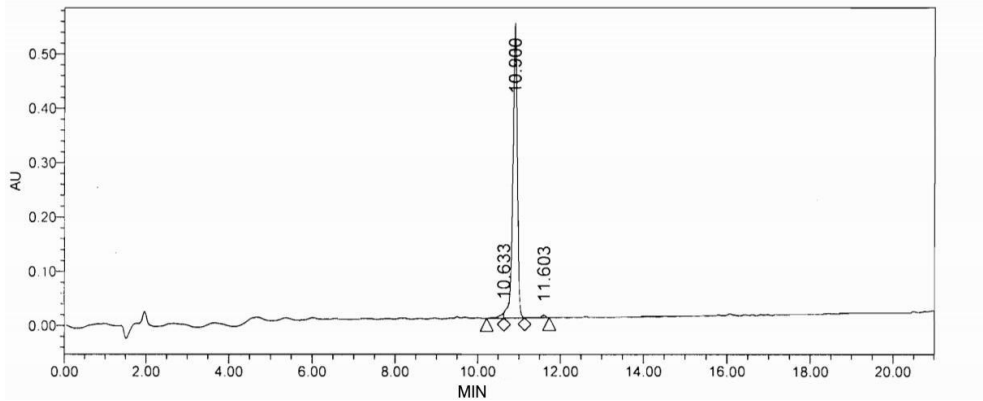
Aliquot and store at -80°C for 12 months.

**Stability Test:** The thermal stability is described by the loss rate. The loss rate was determined by accelerated thermal degradation test, that is, incubate the protein at 37°C for 48h, and no obvious degradation and precipitation were observed. The loss rate is less than 5% within the expiration date under appropriate storage condition.

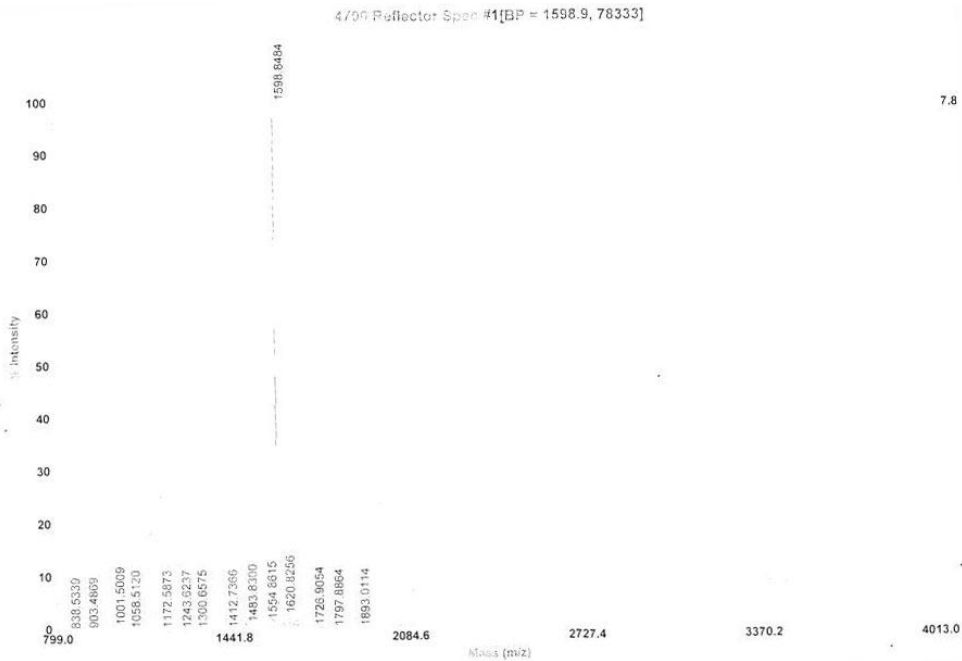
## **[ SEQUENCE ]**

DRS NATQLDGPAG ALLL

**[ IDENTIFICATION ]**



**Figure 1. HPLC of the Original Peptide**



**Figure 2. MASS Spectrometry of the Original Peptide**

**[ IMPORTANT NOTE ]**

The kit is designed for research use only, we will not be responsible for any issue if the kit was used in clinical diagnostic or any other procedures.