

**PAJ696Hu01**

**Polyclonal Antibody to Abl Interactor 1 (ABI1)**

**Organism Species: *Homo sapiens (Human)***

***Instruction manual***

FOR RESEARCH USE ONLY

NOT FOR USE IN CLINICAL DIAGNOSTIC PROCEDURES

---

13th Edition (Revised in Aug, 2023)

### **[ PROPERTIES ]**

**Source:** Polyclonal antibody preparation

**Host:** Rabbit

**Purification:** Antigen-specific affinity chromatography followed by Protein A affinity chromatography

**Traits:** Liquid

**Concentration:** 0.5mg/ml

**UOM:** 100µl

**Cross Reactivity:** Mouse;Rat;Porcine

**Applications:** WB; IHC

### **[ IMMUNOGEN ]**

**Immunogen:** Recombinant ABI1 (Met1~Pro182) expressed in *E.coli*

**Accession No.:** RPJ696Hu01

### **[ APPLICATIONS ]**

Western blotting: 0.01-3µg/mL;

Immunohistochemistry: 5-30µg/mL;

Optimal working dilutions must be determined by end user.

### **[ FORMULATION ]**

**Form & Buffer:** Supplied as solution form in 0.01M PBS, pH7.4, containing 0.05% Proclin-300, 50% glycerol.

### **[ STORAGE AND STABILITY ]**

**Storage:** Avoid repeated freeze/thaw cycles.

Store at 4°C for frequent use.

Aliquot and store at -20°C for 24 months.

**Stability Test:** The thermal stability is described by the loss rate. The loss rate was determined by accelerated thermal degradation test, that is, incubate the protein at 37°C for 48h, and no obvious degradation and precipitation were observed. The loss rate is less than 5% within the

expiration date under appropriate storage condition.

**[ IDENTIFICATION ]**

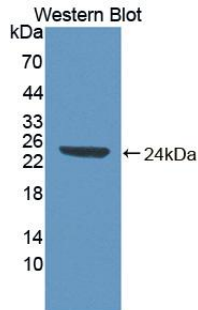
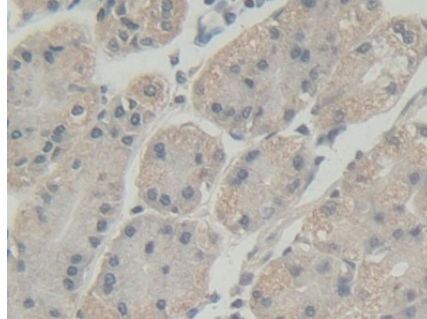
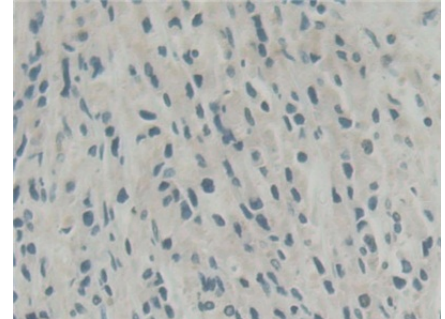


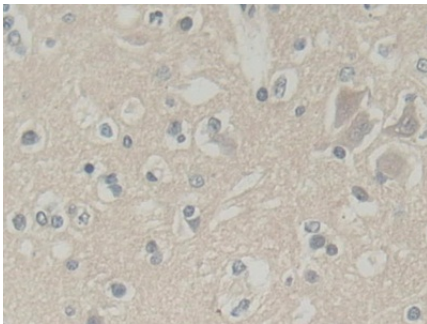
Figure. Western Blot; Sample: Recombinant ABI1, Human.



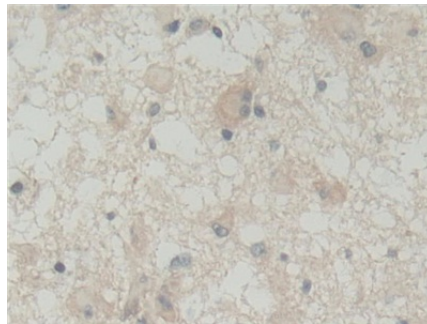
DAB staining on IHC-P; Samples: Human Stomach Tissue; Primary Ab: 30µg/ml Rabbit Anti-Human ABI1 Antibody Second Ab: 2µg/mL HRP-Linked Caprine Anti-Rabbit IgG Polyclonal Antibody (Catalog: SAA544Rb19)



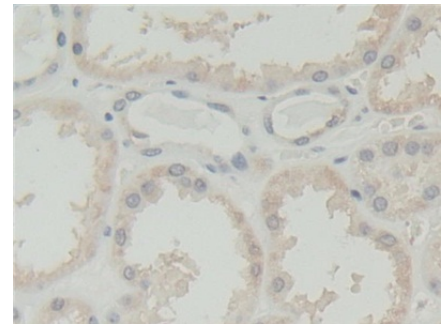
DAB staining on IHC-P; Samples: Human Prostate cancer Tissue; Primary Ab: 30µg/ml Rabbit Anti-Human ABI1 Antibody Second Ab: 2µg/mL HRP-Linked Caprine Anti-Rabbit IgG Polyclonal Antibody (Catalog: SAA544Rb19)



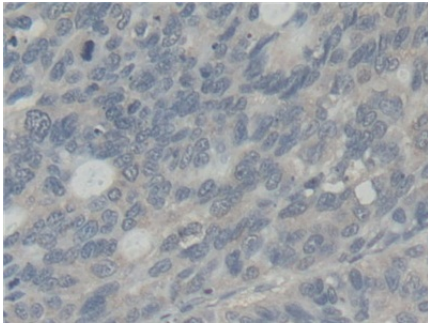
DAB staining on IHC-P; Samples: Human Cerebrum Tissue; Primary Ab: 30µg/ml Rabbit Anti-Human ABI1 Antibody Second Ab: 2µg/mL HRP-Linked Caprine Anti-Rabbit IgG Polyclonal Antibody (Catalog: SAA544Rb19)



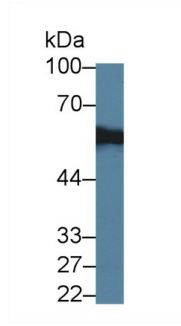
DAB staining on IHC-P; Samples: Human Glioma Tissue; Primary Ab: 30µg/ml Rabbit Anti-Human ABI1 Antibody Second Ab: 2µg/mL HRP-Linked Caprine Anti-Rabbit IgG Polyclonal Antibody (Catalog: SAA544Rb19)



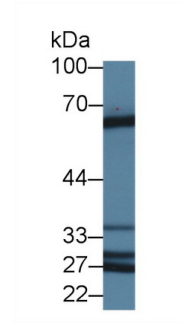
DAB staining on IHC-P; Samples: Human Kidney Tissue; Primary Ab: 30µg/ml Rabbit Anti-Human ABI1 Antibody Second Ab: 2µg/mL HRP-Linked Caprine Anti-Rabbit IgG Polyclonal Antibody (Catalog: SAA544Rb19)



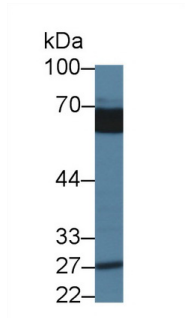
DAB staining on IHC-P;  
 Samples: Human Stomach cancer  
 Tissue;  
 Primary Ab: 30µg/ml Rabbit Anti-  
 Human ABI1 Antibody  
 Second Ab: 2µg/mL HRP-Linked  
 Caprine Anti-Rabbit IgG Polyclonal  
 Antibody  
 (Catalog: SAA544Rb19)



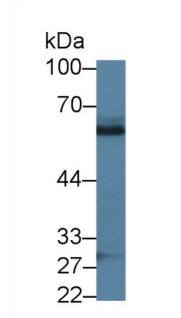
Western Blot; Sample: Porcine Small  
 intestine lysate;  
 Primary Ab: 1µg/ml Rabbit Anti-Human  
 ABI1 Antibody  
 Second Ab: 0.2µg/mL HRP-Linked  
 Caprine Anti-Rabbit IgG Polyclonal  
 Antibody  
 (Catalog: SAA544Rb19) Selected



Western Blot; Sample: Human Lung  
 lysate;  
 Primary Ab: 1µg/ml Rabbit Anti-Human  
 ABI1 Antibody  
 Second Ab: 0.2µg/mL HRP-Linked  
 Caprine Anti-Rabbit IgG Polyclonal  
 Antibody  
 (Catalog: SAA544Rb19) Selected



Western Blot; Sample: Porcine  
 Cerebrum lysate;  
 Primary Ab: 1µg/ml Rabbit Anti-Human  
 ABI1 Antibody  
 Second Ab: 0.2µg/mL HRP-Linked  
 Caprine Anti-Rabbit IgG Polyclonal  
 Antibody  
 (Catalog: SAA544Rb19) Selected



Western Blot; Sample: Porcine Liver  
 lysate;  
 Primary Ab: 1µg/ml Rabbit Anti-Human  
 ABI1 Antibody  
 Second Ab: 0.2µg/mL HRP-Linked  
 Caprine Anti-Rabbit IgG Polyclonal  
 Antibody  
 (Catalog: SAA544Rb19) Selected

**[ IMPORTANT NOTE ]**

The kit is designed for research use only, we will not be responsible for any issue if the kit was

used in clinical diagnostic or any other procedures.