

PAA816Hu01

Polyclonal Antibody to Alpha-1-Acid Glycoprotein (a1AGP)

Organism Species: *Homo sapiens (Human)*

Instruction manual

FOR RESEARCH USE ONLY

NOT FOR USE IN CLINICAL DIAGNOSTIC PROCEDURES

13th Edition (Revised in Aug, 2023)

[PROPERTIES]

Source: Polyclonal antibody preparation

Host: Rabbit

Purification: Antigen-specific affinity chromatography followed by Protein A affinity chromatography

Traits: Liquid

Concentration: 0.5mg/mL

UOM: 100µL

Cross Reactivity: Rat

Applications: WB

[IMMUNOGEN]

Immunogen: Recombinant a1AGP (Gln19~Ser201) expressed in *E.coli*

Accession No.: RPA816Hu01

[APPLICATIONS]

Western blotting: 0.01-2µg/mL;

Optimal working dilutions must be determined by end user.

[FORMULATION]

Form & Buffer: Supplied as solution form in 0.01M PBS, pH7.4, containing 0.05% Proclin-300, 50% glycerol.

[STORAGE AND STABILITY]

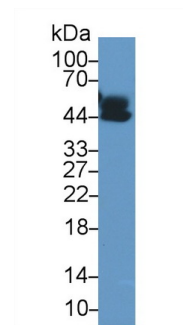
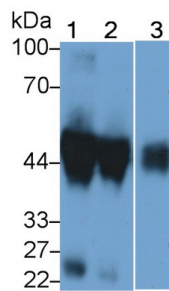
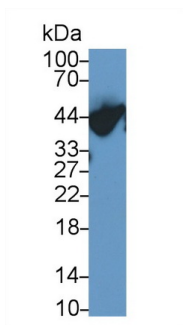
Storage: Avoid repeated freeze/thaw cycles.

Store at 4°C for frequent use.

Aliquot and store at -20°C for 24 months.

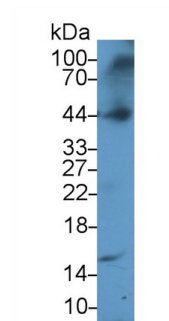
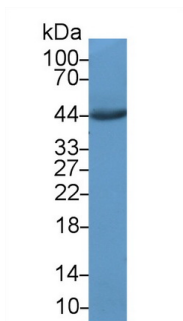
Stability Test: The thermal stability is described by the loss rate. The loss rate was determined by accelerated thermal degradation test, that is, incubate the protein at 37°C for 48h, and no obvious degradation and precipitation were observed. The loss rate is less than 5% within the expiration date under appropriate storage condition.

[IDENTIFICATION]



Western Blot; Sample: Human Plasma; Western Blot; Sample: Lane1: Human
 Primary Ab: 1µg/ml Rabbit Anti-Human Serum; Lane2: Human Plasma; Lane3:
 a1AGP Antibody Second Ab: Human Lung lysate
 0.2µg/mL HRP-Linked Caprine Anti- Primary Ab: 3µg/ml Rabbit Anti-Human
 Rabbit IgG Polyclonal Antibody a1AGP Antibody
 (Catalog: SAA544Rb19) Second Ab: 0.2µg/mL HRP-Linked
 Caprine Anti-Rabbit IgG Polyclonal
 Antibody
 (Catalog: SAA544Rb19)

Western Blot; Sample: Human Lung
 lysate;
 Primary Ab: 1µg/ml Rabbit Anti-Human
 a1AGP Antibody
 Second Ab: 0.2µg/mL HRP-Linked
 Caprine Anti-Rabbit IgG Polyclonal
 Antibody
 (Catalog: SAA544Rb19)



Western Blot; Sample: Rat Cerebrum
 lysate; Western Blot; Sample: Rat Testis
 lysate;
 Primary Ab: 1µg/ml Rabbit Anti-Human Primary Ab: 1µg/ml Rabbit Anti-Human
 a1AGP Antibody a1AGP Antibody
 Second Ab: 0.2µg/mL HRP-Linked Second Ab: 0.2µg/mL HRP-Linked
 Caprine Anti-Rabbit IgG Polyclonal Caprine Anti-Rabbit IgG Polyclonal
 Antibody Antibody
 (Catalog: SAA544Rb19) (Catalog: SAA544Rb19)

[IMPORTANT NOTE]

The kit is designed for research use only, we will not be responsible for any issue if the kit was used in clinical diagnostic or any other procedures.