

PAC307Hu01

Polyclonal Antibody to Ancient Ubiquitous Protein 1 (AUP1)

Organism Species: *Homo sapiens* (Human)

Instruction manual

FOR RESEARCH USE ONLY

NOT FOR USE IN CLINICAL DIAGNOSTIC PROCEDURES

13th Edition (Revised in Aug, 2023)

[**PROPERTIES**]

Source: Polyclonal antibody preparation

Host: Rabbit

Purification: Antigen-specific affinity chromatography followed by Protein A affinity chromatography

Traits: Liquid

Concentration: 0.5mg/mL

UOM: 100µL

Cross Reactivity: Porcine

Applications: WB,IHC

[**IMMUNOGEN**]

Immunogen: Recombinant AUP1 (Val201~Asp410) expressed in *E.coli*

Accession No.: RPC307Hu01

[**APPLICATIONS**]

Western blotting: 0.5-2µg/mL

Immunohistochemistry: 5-20µg/mL

Immunocytochemistry: 5-20µg/mL

Optimal working dilutions must be determined by end user.

[**FORMULATION**]

Form & Buffer: Supplied as solution form in 0.01M PBS, pH7.4, containing 0.05% Proclin-300, 50% glycerol.

[**STORAGE AND STABILITY**]

Storage: Avoid repeated freeze/thaw cycles.

Store at 4°C for frequent use.

Aliquot and store at -20°C for 24 months.

Stability Test: The thermal stability is described by the loss rate. The loss rate was determined by accelerated thermal degradation test, that is, incubate the protein at 37°C for 48h, and no

obvious degradation and precipitation were observed. The loss rate is less than 5% within the expiration date under appropriate storage condition.

[IDENTIFICATION]

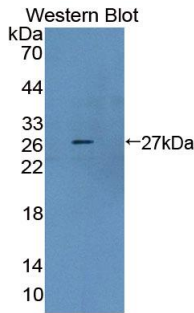
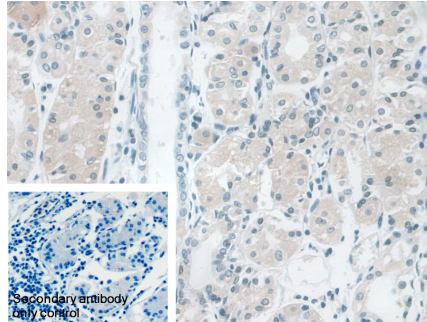
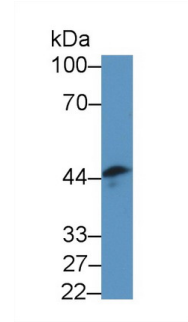


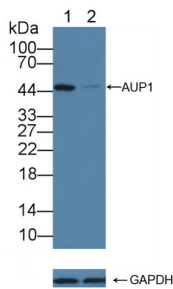
Figure. Western Blot; Sample: Recombinant AUP1, Human.



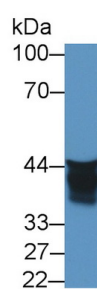
DAB staining on IHC-P;
 Sample: Human Stomach Tissue
 Primary Ab: 10µg/ml Rabbit Anti-Human AUP1 Antibody
 Control: Used PBS instead of primary antibody
 Second Ab: 2µg/ml HRP-Linked Caprine Anti-Rabbit IgG Polyclonal Antibody
 (Catalog: SAA544Rb19)



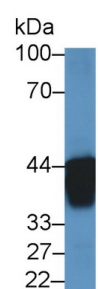
Western Blot; Sample: Human Serum;
 Primary Ab: 1µg/ml Rabbit Anti-Human AUP1 Antibody
 Second Ab: 0.2µg/mL HRP-Linked Caprine Anti-Rabbit IgG Polyclonal Antibody
 (Catalog: SAA544Rb19)



Knockout Verification:
 Lane 1: Wild-type Jurkat cell lysate;
 Lane 2: AUP1 knockout Jurkat cell lysate;
 Predicted MW: 53,46,41kd
 Observed MW: 45kd
 Primary Ab: 1µg/ml Rabbit Anti-Human



Western Blot; Sample: Human Jurkat cell lysate;
 Primary Ab: 1µg/ml Rabbit Anti-Human AUP1 Antibody
 Second Ab: 0.2µg/mL HRP-Linked Caprine Anti-Rabbit IgG Polyclonal Antibody



Western Blot; Sample: Human K562 cell lysate;
 Primary Ab: 1µg/ml Rabbit Anti-Human AUP1 Antibody
 Second Ab: 0.2µg/mL HRP-Linked Caprine Anti-Rabbit IgG Polyclonal Antibody

AUP1 Antibody

(Catalog: SAA544Rb19)

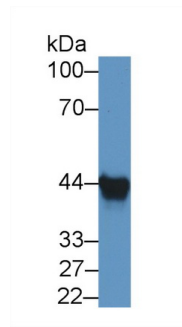
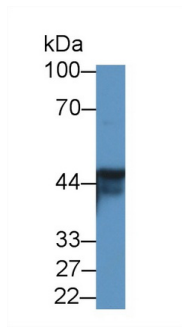
(Catalog: SAA544Rb19)

Second Ab: 0.2µg/mL HRP-Linked

Caprine Anti-Rabbit IgG Polyclonal

Antibody

(Catalog: SAA544Rb19)



Western Blot; Sample: Porcine Bladder lysate; Western Blot; Sample: Porcine Small intestine lysate;

Primary Ab: 1µg/ml Rabbit Anti-Human AUP1 Antibody Primary Ab: 1µg/ml Rabbit Anti-Human AUP1 Antibody

AUP1 Antibody

AUP1 Antibody

Second Ab: 0.2µg/mL HRP-Linked

Second Ab: 0.2µg/mL HRP-Linked

Caprine Anti-Rabbit IgG Polyclonal

Caprine Anti-Rabbit IgG Polyclonal

Antibody

Antibody

(Catalog: SAA544Rb19)

(Catalog: SAA544Rb19)

[**IMPORTANT NOTE**]

The kit is designed for research use only, we will not be responsible for any issue if the kit was used in clinical diagnostic or any other procedures.