

**PAA009Hu01**

**Polyclonal Antibody to Angiotensin 2 (ANGPT2)**

**Organism Species: *Homo sapiens (Human)***

***Instruction manual***

FOR RESEARCH USE ONLY

NOT FOR USE IN CLINICAL DIAGNOSTIC PROCEDURES

---

13th Edition (Revised in Aug, 2023)

**[ PROPERTIES ]**

**Source:** Polyclonal antibody preparation

**Host:** Rabbit

**Purification:** Antigen-specific affinity chromatography followed by Protein A affinity chromatography

**Traits:** Liquid

**Concentration:** 0.5mg/mL

**UOM:** 100µl

**Cross Reactivity:** Mouse

**Applications:** WB,IHC

**[ IMMUNOGEN ]**

**Immunogen:** Recombinant ANGPT2 (Lys24~Leu165) expressed in *E.coli*

**Accession No.:** RPA009Hu01

**[ APPLICATIONS ]**

Western blotting: 0.01-2µg/mL;

Immunohistochemistry: 5-20µg/mL;

Optimal working dilutions must be determined by end user.

**[ FORMULATION ]**

**Form & Buffer:** Supplied as solution form in 0.01M PBS, pH7.4, containing 0.05% Proclin-300, 50% glycerol.

**[ STORAGE AND STABILITY ]**

**Storage:** Avoid repeated freeze/thaw cycles.

Store at 4°C for frequent use.

Aliquot and store at -20°C for 24 months.

**Stability Test:** The thermal stability is described by the loss rate. The loss rate was determined by accelerated thermal degradation test, that is, incubate the protein at 37°C for 48h, and no obvious degradation and precipitation were observed. The loss rate is less than 5% within the

expiration date under appropriate storage condition.

**[ IDENTIFICATION ]**

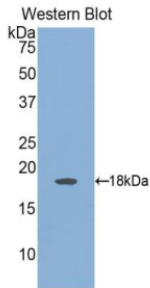
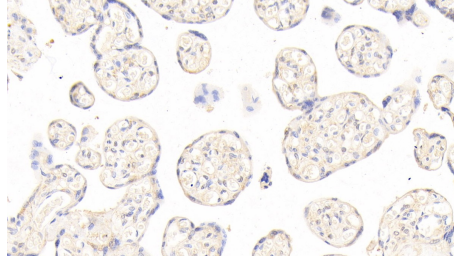
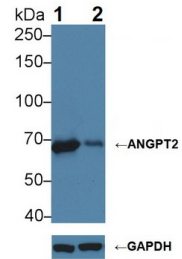


Figure. Western Blot; Sample: Recombinant ANGPT2, Human.



DAB staining on IHC-P; Samples:

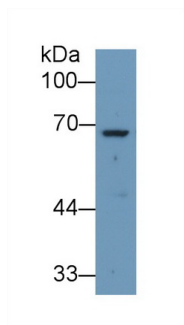
Human Placenta Tissue; Primary Ab: 20µg/ml Rabbit Anti-Human ANGPT2 Antibody Second Ab: 2µg/mL HRP-Linked Caprine Anti-Rabbit IgG Polyclonal Antibody (Catalog: SAA544Rb19)



Knockout Varification:  
Lane 1: Wild-type K562 cell lysate;  
Lane 2: ANGPT2 knockout K562 cell lysate;

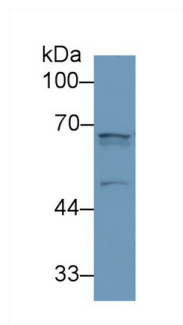
Predicted MW: 51,57kDa  
Observed MW: 68kDa

Primary Ab: 1µg/ml Rabbit Anti-Human ANGPT2 Ab  
Second Ab: 0.2µg/mL HRP-Linked Caprine Anti-Rabbit IgG Polyclonal Antibody (Catalog: SAA544Rb19)



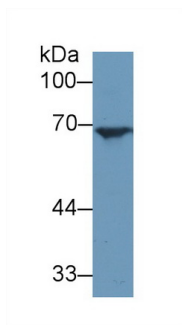
Western Blot; Sample: Human Liver lysate;

Primary Ab: 1µg/ml Rabbit Anti-Human ANGPT2 Antibody  
Second Ab: 0.2µg/mL HRP-Linked Caprine Anti-Rabbit IgG Polyclonal Antibody



Western Blot; Sample: Human Lung lysate;

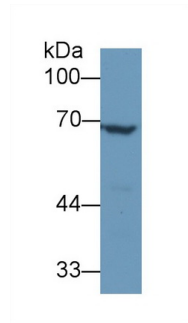
Primary Ab: 1µg/ml Rabbit Anti-Human ANGPT2 Antibody  
Second Ab: 0.2µg/mL HRP-Linked Caprine Anti-Rabbit IgG Polyclonal Antibody



Western Blot; Sample: Mouse Spleen lysate;

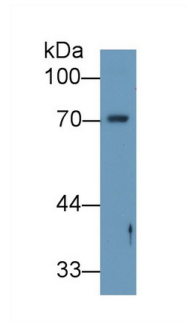
Primary Ab: 1µg/ml Rabbit Anti-Human ANGPT2 Antibody  
Second Ab: 0.2µg/mL HRP-Linked Caprine Anti-Rabbit IgG Polyclonal Antibody

(Catalog: SAA544Rb19)



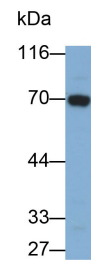
Western Blot; Sample: Human K562 cell lysate;  
 Primary Ab: 1µg/ml Rabbit Anti-Human ANGPT2 Antibody  
 Second Ab: 0.2µg/mL HRP-Linked Caprine Anti-Rabbit IgG Polyclonal Antibody  
 (Catalog: SAA544Rb19)

(Catalog: SAA544Rb19)

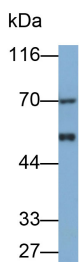


Western Blot; Sample: Human ECV304 cell lysate;  
 Primary Ab: 1µg/ml Rabbit Anti-Human ANGPT2 Antibody  
 Second Ab: 0.2µg/mL HRP-Linked Caprine Anti-Rabbit IgG Polyclonal Antibody  
 (Catalog: SAA544Rb19)

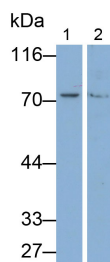
(Catalog: SAA544Rb19)



Western Blot; Sample: 3T3 cell lysate  
 Primary Ab: 0.1µg/ml Rabbit Anti-Human ANGPT2 Antibody  
 Second Ab: 0.2µg/ml HRP-Linked Caprine Anti-Rabbit IgG Polyclonal Antibody  
 (Catalog: SAA544Rb19)



Western Blot; Sample: HUVEC cell lysate  
 Primary Ab: 0.1µg/ml Rabbit Anti-Human ANGPT2 Antibody  
 Second Ab: 0.2µg/ml HRP-Linked Caprine Anti-Rabbit IgG Polyclonal Antibody  
 (Catalog: SAA544Rb19)



Western Blot; Samples: Lane1: SKOV3 cell lysate; Lane2: HBMEC cell lysate;  
 Primary Ab: 0.1µg/ml Rabbit Anti-Human ANGPT2 Antibody  
 Second Ab: 0.2µg/ml HRP-Linked Caprine Anti-Rabbit IgG Polyclonal Antibody  
 (Catalog: SAA544Rb19)

**[ IMPORTANT NOTE ]**

The kit is designed for research use only, we will not be responsible for any issue if the kit was

used in clinical diagnostic or any other procedures.