

PAG888Hu01

Polyclonal Antibody to Ankyrin Repeat Domain Protein 1 (ANKRD1)

Organism Species: *Homo sapiens (Human)*

Instruction manual

FOR RESEARCH USE ONLY

NOT FOR USE IN CLINICAL DIAGNOSTIC PROCEDURES

13th Edition (Revised in Aug, 2023)

[**PROPERTIES**]

Source: Polyclonal antibody preparation

Host: Rabbit

Purification: Antigen-specific affinity chromatography followed by Protein A affinity chromatography

Traits: Liquid

Concentration: 0.5mg/mL

UOM: 100µL

Cross Reactivity: Mouse;Rat;Porcine

Applications: WB; IHC; ICC; IP.

[**IMMUNOGEN**]

Immunogen: Recombinant ANKRD1 (Val6~Leu291) expressed in *E.coli*

Accession No.: RPG888Hu01

[**APPLICATIONS**]

Western blotting: 0.01-2µg/mL;

Immunohistochemistry: 5-20µg/mL;

Immunofluorescence:5-20µg/mL;

Optimal working dilutions must be determined by end user.

[**FORMULATION**]

Form & Buffer: Supplied as solution form in 0.01M PBS, pH7.4, containing 0.05% Proclin-300, 50% glycerol.

[**STORAGE AND STABILITY**]

Storage: Avoid repeated freeze/thaw cycles.

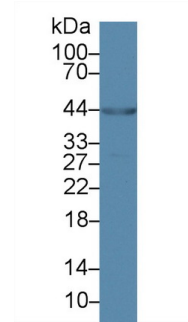
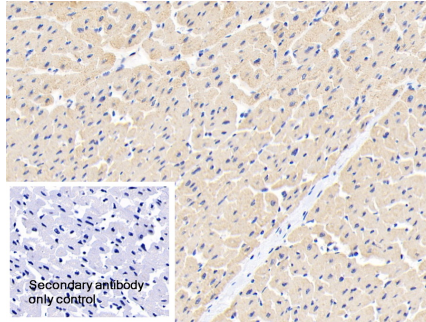
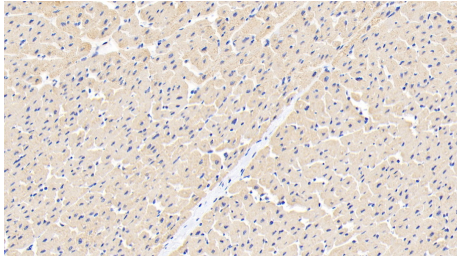
Store at 4°C for frequent use.

Aliquot and store at -20°C for 24 months.

Stability Test: The thermal stability is described by the loss rate. The loss rate was determined by accelerated thermal degradation test, that is, incubate the protein at 37°C for 48h, and no

obvious degradation and precipitation were observed. The loss rate is less than 5% within the expiration date under appropriate storage condition.

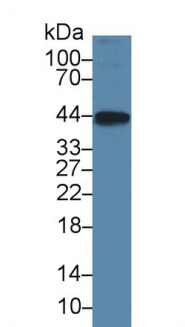
[IDENTIFICATION]



DAB staining on IHC-P; Samples:
 Human Cardiac Muscle Tissue; Primary
 Ab: 20 μ g/ml Rabbit Anti-Human
 ANKRD1 Antibody Second Ab:
 2 μ g/mL HRP-Linked Caprine Anti-
 Rabbit IgG Polyclonal Antibody
 (Catalog: SAA544Rb19)

DAB staining on IHC-P;
 Sample: Human Cardiac Muscle Tissue
 Primary Ab: 20 μ g/ml Rabbit Anti-
 Human ANKRD1 Antibody
 Control: Used PBS instead of primary
 antibody
 Second Ab: 2 μ g/ml HRP-Linked
 Caprine Anti-Rabbit IgG Polyclonal
 Antibody
 (Catalog: SAA544Rb19)

Western Blot; Sample: Porcine Heart
 lysate;
 Primary Ab: 2 μ g/ml Rabbit Anti-Human
 ANKRD1 Antibody
 Second Ab: 0.2 μ g/mL HRP-Linked
 Caprine Anti-Rabbit IgG Polyclonal
 Antibody
 (Catalog: SAA544Rb19)



Western Blot; Sample: Mouse Heart
 lysate;
 Primary Ab: 2 μ g/ml Rabbit Anti-Human
 ANKRD1 Antibody
 Second Ab: 0.2 μ g/mL HRP-Linked
 Caprine Anti-Rabbit IgG Polyclonal
 Antibody

(Catalog: SAA544Rb19)

[IMPORTANT NOTE]

The kit is designed for research use only, we will not be responsible for any issue if the kit was used in clinical diagnostic or any other procedures.