

**PAB944Hu01**

**Polyclonal Antibody to Annexin A2 (ANXA2)**

**Organism Species: *Homo sapiens (Human)***

***Instruction manual***

FOR RESEARCH USE ONLY

NOT FOR USE IN CLINICAL DIAGNOSTIC PROCEDURES

---

13th Edition (Revised in Aug, 2023)

### **[ PROPERTIES ]**

**Source:** Polyclonal antibody preparation

**Host:** Rabbit

**Purification:** Antigen-specific affinity chromatography followed by Protein A affinity chromatography

**Traits:** Liquid

**Concentration:** 0.48mg/mL

**UOM:** 100µL

**Cross Reactivity:** Mouse;Rat

**Applications:** WB; IHC; ICC; IP.

### **[ IMMUNOGEN ]**

**Immunogen:** Recombinant ANXA2 (Met1~Asp339) expressed in *E.coli*

**Accession No.:** RPB944Hu01

### **[ APPLICATIONS ]**

Western blotting: 0.01-2µg/mL;

Immunohistochemistry: 5-20µg/mL;

Immunocytochemistry: 5-20µg/mL;

Optimal working dilutions must be determined by end user.

### **[ FORMULATION ]**

**Form & Buffer:** Supplied as solution form in PBS, pH7.4, containing 0.02% NaN<sub>3</sub>, 50% glycerol.

### **[ STORAGE AND STABILITY ]**

**Storage:** Avoid repeated freeze/thaw cycles.

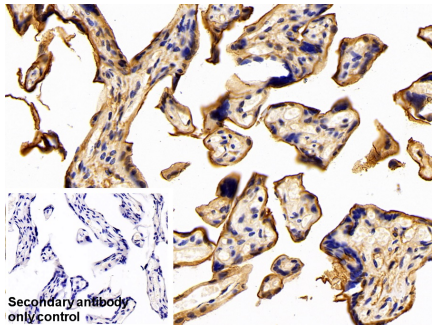
Store at 4°C for frequent use.

Aliquot and store at -20°C for 24 months.

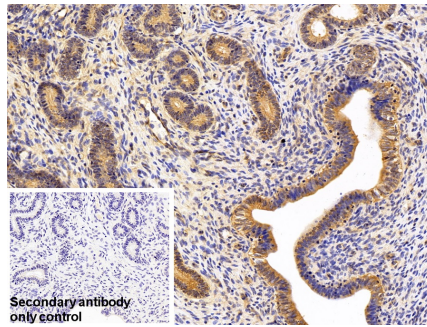
**Stability Test:** The thermal stability is described by the loss rate. The loss rate was determined by accelerated thermal degradation test, that is, incubate the protein at 37°C for 48h, and no

obvious degradation and precipitation were observed. The loss rate is less than 5% within the expiration date under appropriate storage condition.

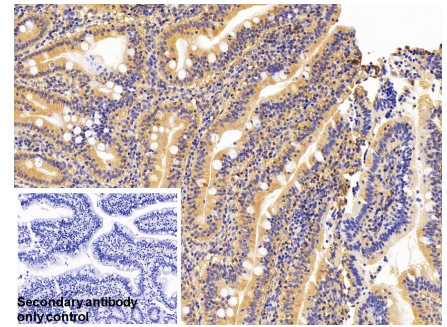
**[ IDENTIFICATION ]**



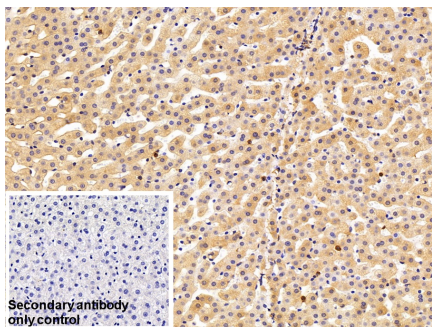
DAB staining on IHC-P;  
 Sample: Human Placenta Tissue  
 Primary Ab: 10µg/ml Rabbit Anti-Human ANXA2  
 Antibody Control: Used PBS instead of primary antibody  
 Second Ab: 2?g/ml HRP-Linked Caprine Anti-Rabbit IgG Polyclonal Antibody (Catalog: SAA544Rb19)



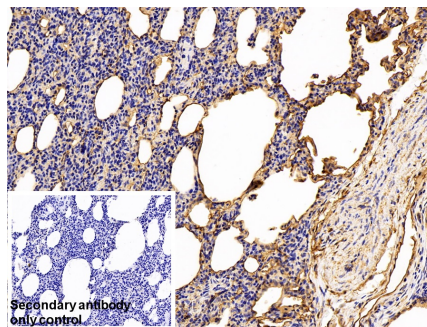
DAB staining on IHC-P;  
 Sample: Porcine Uterus Tissue  
 Primary Ab: 10µg/ml Rabbit Anti-Human ANXA2 Antibody  
 Control: Used PBS instead of primary antibody  
 Second Ab: 2?g/ml HRP-Linked Caprine Anti-Rabbit IgG Polyclonal Antibody (Catalog: SAA544Rb19)



DAB staining on IHC-P;  
 Sample: Porcine Small intestine Tissue  
 Primary Ab: 10µg/ml Rabbit Anti-Human ANXA2 Antibody  
 Control: Used PBS instead of primary antibody  
 Second Ab: 2?g/ml HRP-Linked Caprine Anti-Rabbit IgG Polyclonal Antibody (Catalog: SAA544Rb19)



DAB staining on IHC-P;  
 Sample: Porcine Liver Tissue  
 Primary Ab: 10µg/ml Rabbit Anti-Human ANXA2 Antibody  
 Control: Used PBS instead of primary antibody  
 Second Ab: 2?g/ml HRP-Linked



DAB staining on IHC-P;  
 Sample: Porcine Lung Tissue  
 Primary Ab: 10µg/ml Rabbit Anti-Human ANXA2 Antibody  
 Control: Used PBS instead of primary antibody  
 Second Ab: 2?g/ml HRP-Linked

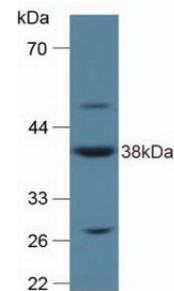


Figure. Western Blot; Sample: Rat Placenta Tissue.

Caprine Anti-Rabbit IgG Polyclonal

Antibody

(Catalog: SAA544Rb19)

Caprine Anti-Rabbit IgG Polyclonal

Antibody

(Catalog: SAA544Rb19)

**[ IMPORTANT NOTE ]**

The kit is designed for research use only, we will not be responsible for any issue if the kit was used in clinical diagnostic or any other procedures.