

PAA310Bo01

Polyclonal Antibody to Apolipoprotein H (APOH)

Organism Species: *Bos taurus*; Bovine (Cattle)

Instruction manual

FOR RESEARCH USE ONLY

NOT FOR USE IN CLINICAL DIAGNOSTIC PROCEDURES

13th Edition (Revised in Aug, 2023)

[**PROPERTIES**]

Source: Polyclonal antibody preparation

Host: Rabbit

Purification: Antigen-specific affinity chromatography followed by Protein A affinity chromatography

Traits: Liquid

Concentration: 0.5mg/mL

UOM: 100µL

Cross Reactivity: N/A

Applications: WB; IHC; ICC; IP.

[**IMMUNOGEN**]

Immunogen: Recombinant APOH (Arg21~Cys345) expressed in *E.coli*

Accession No.: RPA310Bo01

[**APPLICATIONS**]

Western blotting: 0.01-3µg/mL

Immunohistochemistry: 5-30µg/mL

Immunocytochemistry: 5-30µg/mL

Optimal working dilutions must be determined by end user.

[**FORMULATION**]

Form & Buffer: Supplied as solution form in PBS, pH7.4, containing 0.02% NaN₃, 50% glycerol.

[**STORAGE AND STABILITY**]

Storage: Avoid repeated freeze/thaw cycles.

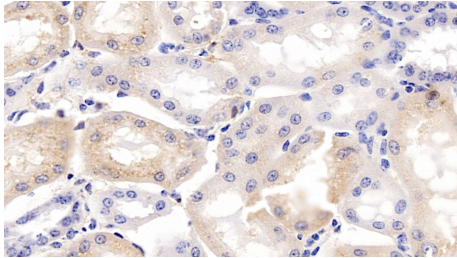
Store at 4°C for frequent use.

Aliquot and store at -20°C for 24 months.

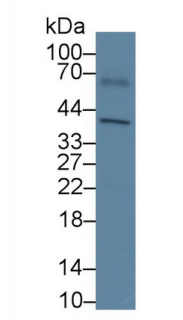
Stability Test: The thermal stability is described by the loss rate. The loss rate was determined by accelerated thermal degradation test, that is, incubate the protein at 37°C for 48h, and no

obvious degradation and precipitation were observed. The loss rate is less than 5% within the expiration date under appropriate storage condition.

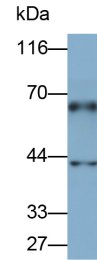
[IDENTIFICATION]



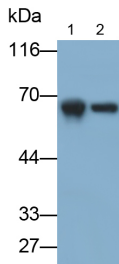
DAB staining on IHC-P; Samples:
 Bovine Kidney Tissue; Primary Ab:
 20µg/ml Rabbit Anti-Bovine APOH
 Antibody Second Ab: 2µg/mL HRP-
 Linked Caprine Anti-Rabbit IgG
 Polyclonal Antibody (Catalog:
 SAA544Rb19)



Western Blot; Sample: Bovine Liver
 lysate;
 Primary Ab: 3µg/ml Rabbit Anti-Bovine
 APOH Antibody
 Second Ab: 0.2µg/mL HRP-Linked
 Caprine Anti-Rabbit IgG Polyclonal
 Antibody
 (Catalog: SAA544Rb19)



Western Blot; Sample: Bovine Kidney
 lysate
 Primary Ab: 0.2µg/ml Rabbit Anti-
 Bovine APOH Antibody
 Second Ab: 0.2µg/ml HRP-Linked
 Caprine Anti-Rabbit IgG Polyclonal
 Antibody
 (Catalog: SAA544Rb19)



Western Blot; Samples: Lane1: Bovine
 Serum; Lane2: Porcine Serum;
 Primary Ab: 0.2µg/ml Rabbit Anti-
 Bovine APOH Antibody
 Second Ab: 0.2µg/ml HRP-Linked
 Caprine Anti-Rabbit IgG Polyclonal
 Antibody
 (Catalog: SAA544Rb19)

[IMPORTANT NOTE]

The kit is designed for research use only, we will not be responsible for any issue if the kit was used in clinical diagnostic or any other procedures.