

PAB354Hu01

Polyclonal Antibody to Aryl Hydrocarbon Receptor (AhR)

Organism Species: *Homo sapiens (Human)*

Instruction manual

FOR RESEARCH USE ONLY

NOT FOR USE IN CLINICAL DIAGNOSTIC PROCEDURES

13th Edition (Revised in Aug, 2023)

[PROPERTIES]

Source: Polyclonal antibody preparation

Host: Rabbit

Purification: Antigen-specific affinity chromatography followed by Protein A affinity chromatography

Traits: Liquid

Concentration: 0.5mg/mL

UOM: 100µL

Cross Reactivity: Mouse

Applications: WB; IHC; ICC/IF

[IMMUNOGEN]

Immunogen: Recombinant AhR (Val128~Asn399) expressed in *E.coli*

Accession No.: RPB354Hu01

[APPLICATIONS]

Western blotting: 0.01-4µg/mL;

Immunohistochemistry: 5-20µg/mL;

Immunocytochemistry: 5-20µg/mL;

Optimal working dilutions must be determined by end user.

[FORMULATION]

Form & Buffer: Supplied as solution form in 0.01M PBS, pH7.4, containing 0.05% Proclin-300, 50% glycerol.

[STORAGE AND STABILITY]

Storage: Avoid repeated freeze/thaw cycles.

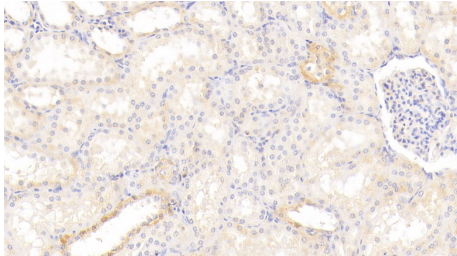
Store at 4°C for frequent use.

Aliquot and store at -20°C for 24 months.

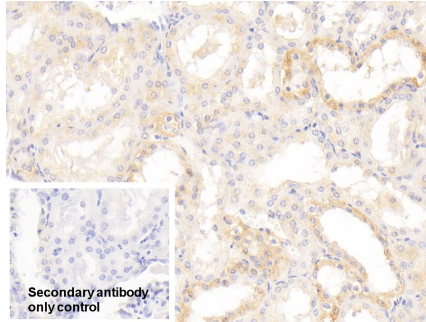
Stability Test: The thermal stability is described by the loss rate. The loss rate was determined by accelerated thermal degradation test, that is, incubate the protein at 37°C for 48h, and no

obvious degradation and precipitation were observed. The loss rate is less than 5% within the expiration date under appropriate storage condition.

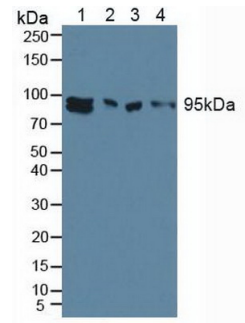
[IDENTIFICATION]



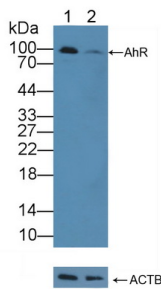
DAB staining on IHC-P; Samples:
 Human Kidney Tissue; Primary Ab:
 20?g/ml Rabbit Anti-Human AhR
 Antibody Second Ab: 2µg/mL HRP-
 Linked Caprine Anti-Rabbit IgG
 Polyclonal Antibody (Catalog:
 SAA544Rb19)



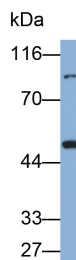
DAB staining on IHC-P;
 Sample: Human Kidney Tissue
 Primary Ab: 20µg/ml Rabbit Anti-
 Human AhR Antibody
 Control: Used PBS instead of primary
 antibody
 Second Ab: 2µg/ml HRP-Linked
 Caprine Anti-Rabbit IgG Polyclonal
 Antibody
 (Catalog: SAA544Rb19)



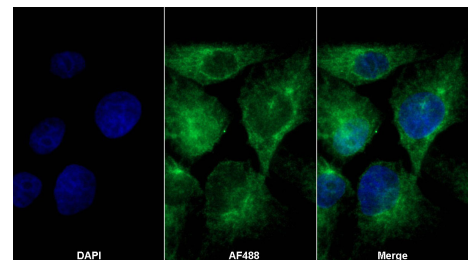
Western Blot; Sample: Lane1: MCF7
 cell lysate; Lane2: 293T cell lysate;
 Lane3: 3T3-L1 cell lysate; Lane4:
 Mouse Cerebrum lysate
 Primary Ab: 4µg/ml Rabbit Anti-Human
 AhR Antibody
 Second Ab: 0.2µg/mL HRP-Linked
 Caprine Anti-Rabbit IgG Polyclonal
 Antibody
 (Catalog: SAA544Rb19)



Knockout Varification:
 Lane 1: Wild-type MCF7 cell lysate;
 Lane 2: AhR knockout MCF7 cell
 lysate;
 Predicted MW: 96kd
 Observed MW: 95kd
 Primary Ab: 4µg/ml Rabbit Anti-Human



Western Blot; Sample: PC3 cell lysate
 Primary Ab: 0.06µg/ml Rabbit Anti-
 Human AhR Antibody
 Second Ab: 0.2?g/ml HRP-Linked
 Caprine Anti-Rabbit IgG Polyclonal
 Antibody
 (Catalog: SAA544Rb19)



AF488 staining on IF;
 Sample: HeLa cell
 Primary Ab: 20µg/ml Rabbit Anti-
 Human AhR Antibody
 Second Ab: 2?g/ml AF488-Linked
 Caprine Anti-Rabbit IgG Polyclonal
 Antibody
 (Catalog: SAA544Rb11)

AhR Antibody

Second Ab: 0.2µg/mL HRP-Linked

Caprine Anti-Rabbit IgG Polyclonal

Antibody

(Catalog: SAA544Rb19)

[IMPORTANT NOTE]

The kit is designed for research use only, we will not be responsible for any issue if the kit was used in clinical diagnostic or any other procedures.