

PAE582Ra01

Polyclonal Antibody to B-Cell CLL/Lymphoma 2 Like Protein (Bcl2L)

Organism Species: *Rattus norvegicus* (Rat)

Instruction manual

FOR RESEARCH USE ONLY

NOT FOR USE IN CLINICAL DIAGNOSTIC PROCEDURES

13th Edition (Revised in Aug, 2023)

[**PROPERTIES**]

Source: Polyclonal antibody preparation

Host: Rabbit

Purification: Antigen-specific affinity chromatography followed by Protein A affinity chromatography

Traits: Liquid

Concentration: 0.5mg/mL

UOM: 20 μ L

Cross Reactivity: Human;Mouse;Porcine;Bovine;Equine

Applications: WB; IHC; ICC; IP.

[**IMMUNOGEN**]

Immunogen: Recombinant Bcl2L (Ser2~Arg149) expressed in *E.coli*

Accession No.: RPE582Ra01

[**APPLICATIONS**]

Western blotting: 0.01-2 μ g/mL;

Immunohistochemistry: 5-30 μ g/mL;

Immunocytochemistry: 5-40 μ g/mL;

Optimal working dilutions must be determined by end user.

[**FORMULATION**]

Form & Buffer: Supplied as solution form in 0.01M PBS, pH7.4, containing 0.05% Proclin-300, 50% glycerol.

[**STORAGE AND STABILITY**]

Storage: Avoid repeated freeze/thaw cycles.

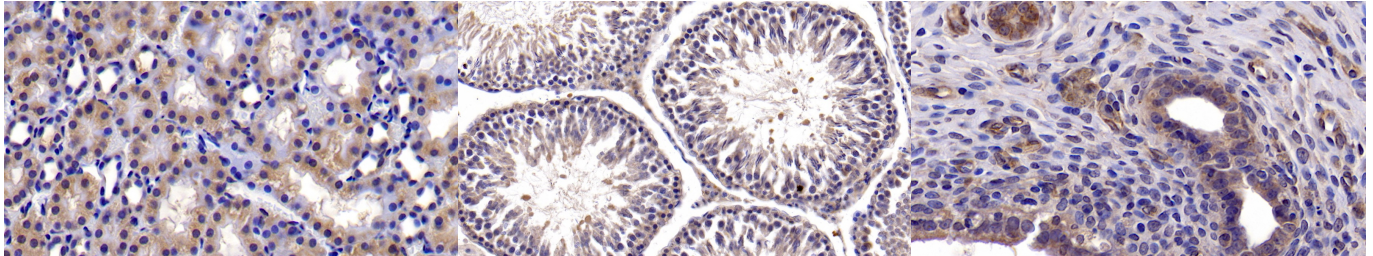
Store at 4°C for frequent use.

Aliquot and store at -20°C for 24 months.

Stability Test: The thermal stability is described by the loss rate. The loss rate was determined by accelerated thermal degradation test, that is, incubate the protein at 37°C for 48h, and no

obvious degradation and precipitation were observed. The loss rate is less than 5% within the expiration date under appropriate storage condition.

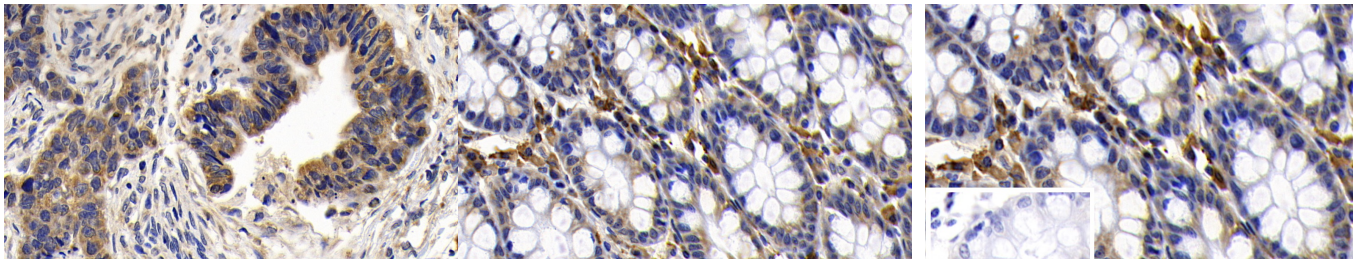
[IDENTIFICATION]



DAB staining on IHC-P; Samples: Rat Kidney Tissue; Primary Ab: 30ug/ml Rabbit Anti-Rat Bcl2L Antibody Second Ab: 2µg/mL HRP-Linked Caprine Anti-Rabbit IgG Polyclonal Antibody (Catalog: SAA544Rb19)

DAB staining on IHC-P; Samples: Rat Testis Tissue; Primary Ab: 30ug/ml Rabbit Anti-Rat Bcl2L Antibody Second Ab: 2µg/mL HRP-Linked Caprine Anti-Rabbit IgG Polyclonal Antibody (Catalog: SAA544Rb19)

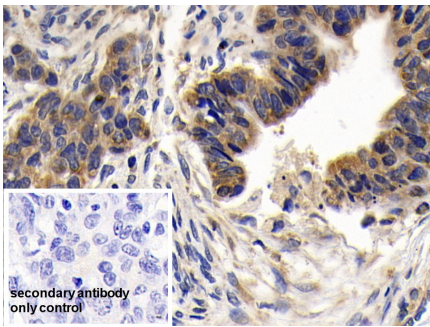
DAB staining on IHC-P; Samples: Rat Uterus Tissue; Primary Ab: 30ug/ml Rabbit Anti-Rat Bcl2L Antibody Second Ab: 2µg/mL HRP-Linked Caprine Anti-Rabbit IgG Polyclonal Antibody (Catalog: SAA544Rb19)



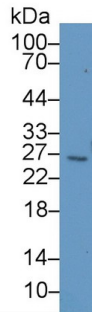
DAB staining on IHC-P; Sample: Human Lymphoma Tissue; Primary Ab: 20ug/ml Rabbit Anti-Rat Bcl2L Antibody Second Ab: 2µg/mL HRP-Linked Caprine Anti-Rabbit IgG Polyclonal Antibody (Catalog: SAA544Rb19)

DAB staining on IHC-P; Sample: Human Colon Tissue; Primary Ab: 20ug/ml Rabbit Anti-Rat Bcl2L Antibody Second Ab: 2µg/mL HRP-Linked Caprine Anti-Rabbit IgG Polyclonal Antibody (Catalog: SAA544Rb19)

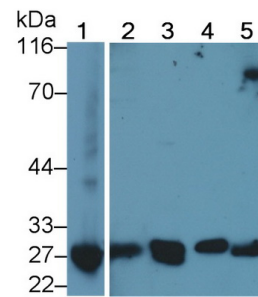
DAB staining on IHC-P; Sample: Human Colon Tissue Primary Ab: 20µg/ml Rabbit Anti-Rat Bcl2L Antibody Control: Used PBS instead of primary antibody Second Ab: 2µg/ml HRP-Linked Caprine Anti-Rabbit IgG Polyclonal Antibody (Catalog: SAA544Rb19)



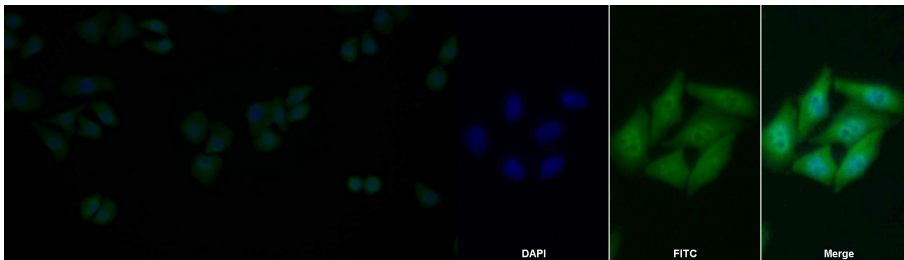
DAB staining on IHC-P;
 Sample: Human Lymphoma Tissue
 Primary Ab: 20µg/ml Rabbit Anti-Rat Bcl2L Antibody
 Control: Used PBS instead of primary antibody
 Second Ab: 2µg/ml HRP-Linked Caprine Anti-Rabbit IgG Polyclonal Antibody
 (Catalog: SAA544Rb19)



Western Blot; Sample: Rat Serum;
 Primary Ab: 1µg/ml Rabbit Anti-Rat Bcl2L Antibody
 Second Ab: 0.2µg/mL HRP-Linked Caprine Anti-Rabbit IgG Polyclonal Antibody
 (Catalog: SAA544Rb19)

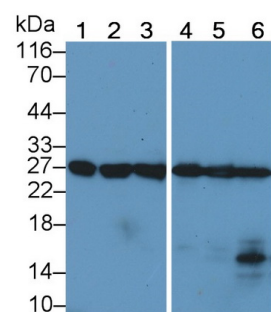


Western Blot; Sample: Lane1: Rat Blood Cells lysate; Lane2: Rat Thymus lysate; Lane3: 3T3-L1 cell lysate; Lane4: Mouse Blood Cells lysate; Lane5: Mouse Thymus lysate
 Primary Ab: 0.5µg/ml Rabbit Anti-Rat Bcl2L Antibody
 Second Ab: 0.2µg/mL HRP-Linked Caprine Anti-Rabbit IgG Polyclonal Antibody
 (Catalog: SAA544Rb19)



FITC staining on IF;
 Samples: Human HeLa cell;
 Primary Ab: 40µg/ml Rabbit Anti-Rat Bcl2L Antibody
 Second Ab: 1.5µg/ml FITC-Linked Caprine Anti-Rabbit IgG Polyclonal Antibody
 (Catalog: SAA544Rb18)

FITC staining on IF; Sample: HeLa cell
 Primary Ab: 40µg/ml Rabbit Anti-Rat Bcl2L Antibody
 Second Ab: 2µg/ml FITC-Linked Caprine Anti-Rabbit IgG Polyclonal Antibody
 (Catalog: SAA544Rb11)



Western Blot; Sample: Lane1: Rat Plasma; Lane2: Rat Blood Cells lysate; Lane3: Rat Thymus lysate; Lane4: Porcine Blood Cells lysate; Lane5: Bovine Blood Cells lysate; Lane6: Equine Blood Cells lysate
 Primary Ab: 1µg/ml Rabbit Anti-Rat Bcl2L Antibody
 Second Ab: 0.2µg/mL HRP-Linked Caprine Anti-Rabbit IgG Polyclonal

Antibody
(Catalog: SAA544Rb19)

[IMPORTANT NOTE]

The kit is designed for research use only, we will not be responsible for any issue if the kit was used in clinical diagnostic or any other procedures.