

PAA778Hu01

Polyclonal Antibody to B-Cell Leukemia/Lymphoma 2 (Bcl2)

Organism Species: *Homo sapiens (Human)*

Instruction manual

FOR RESEARCH USE ONLY

NOT FOR USE IN CLINICAL DIAGNOSTIC PROCEDURES

13th Edition (Revised in Aug, 2023)

[**PROPERTIES**]

Source: Polyclonal antibody preparation

Host: Rabbit

Purification: Antigen-specific affinity chromatography followed by Protein A affinity chromatography

Traits: Liquid

Concentration: 0.5mg/ml

UOM: 100µl

Cross Reactivity: Mouse;Porcine

Applications: WB,IHC,ICC/IF

[**IMMUNOGEN**]

Immunogen: Recombinant Bcl2 (Ala2~Asp211) expressed in *E.coli*

Accession No.: RPA778Hu01

[**APPLICATIONS**]

Western blotting: 0.01-3µg/mL;

Immunohistochemistry: 5-20µg/mL;

Immunofluorescence:5-20µg/mL;

Optimal working dilutions must be determined by end user.

[**FORMULATION**]

Form & Buffer: Supplied as solution form in 0.01M PBS, pH7.4, containing 0.05% Proclin-300, 50% glycerol.

[**STORAGE AND STABILITY**]

Storage: Avoid repeated freeze/thaw cycles.

Store at 4°C for frequent use.

Aliquot and store at -20°C for 24 months.

Stability Test: The thermal stability is described by the loss rate. The loss rate was determined by accelerated thermal degradation test, that is, incubate the protein at 37°C for 48h, and no

obvious degradation and precipitation were observed. The loss rate is less than 5% within the expiration date under appropriate storage condition.

[IDENTIFICATION]

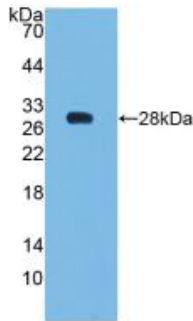
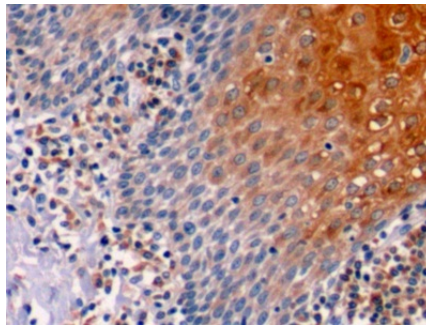
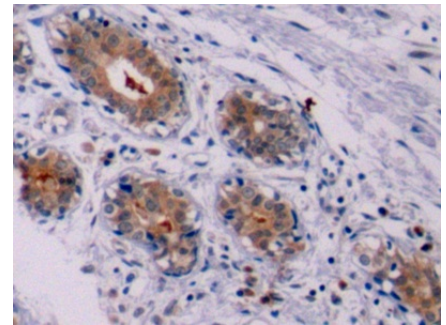


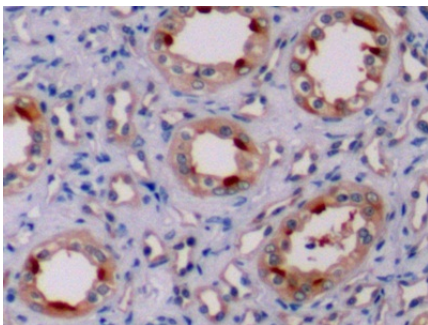
Figure. Western Blot; Sample: Recombinant Bcl2, Human.



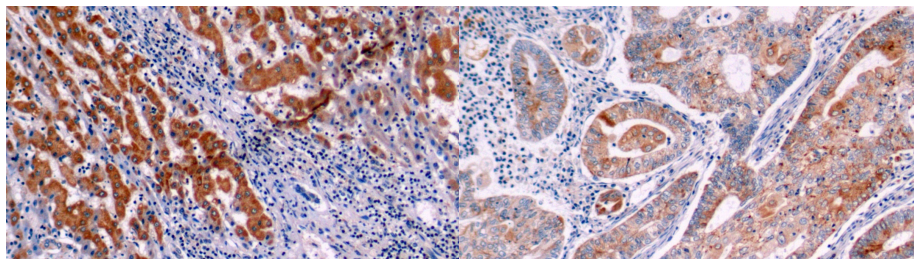
DAB staining on IHC-P;
Samples: Human Tonsil Tissue;
Primary Ab: 10µg/ml Rabbit Anti-Human Bcl2 Antibody
Second Ab: 2µg/mL HRP-Linked Caprine Anti-Rabbit IgG Polyclonal Antibody
(Catalog: SAA544Rb19)



DAB staining on IHC-P;
Samples: Human Breast cancer Tissue;
Primary Ab: 10µg/ml Rabbit Anti-Human Bcl2 Antibody
Second Ab: 2µg/mL HRP-Linked Caprine Anti-Rabbit IgG Polyclonal Antibody
(Catalog: SAA544Rb19)

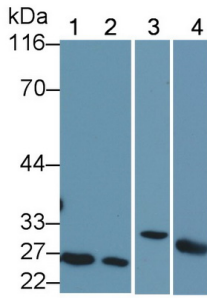


DAB staining on IHC-P;
Samples: Human Kidney Tissue;
Primary Ab: 10µg/ml Rabbit Anti-Human Bcl2 Antibody
Second Ab: 2µg/mL HRP-Linked Caprine Anti-Rabbit IgG Polyclonal Antibody
(Catalog: SAA544Rb19)

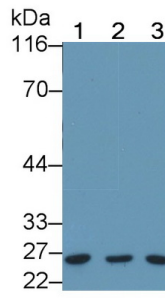


DAB staining on IHC-P;
Sample: Human Liver cancer Tissue;
Primary Ab: 20ug/ml Rabbit Anti-Human Bcl2 Antibody
Second Ab: 2µg/mL HRP-Linked Caprine Anti-Rabbit IgG Polyclonal Antibody
(Catalog: SAA544Rb19)

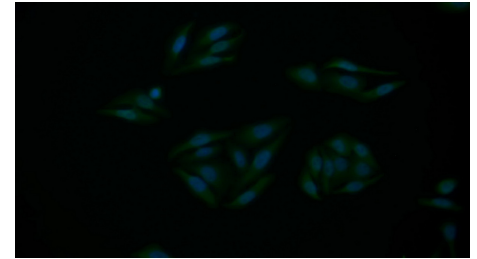
DAB staining on IHC-P;
Sample: Human Endometrial cancer Tissue;
Primary Ab: 20ug/ml Rabbit Anti-Human Bcl2 Antibody
Second Ab: 2µg/mL HRP-Linked Caprine Anti-Rabbit IgG Polyclonal Antibody
(Catalog: SAA544Rb19)



Western Blot; Sample: Lane1: Jurkat cell lysate; Lane2: U937 cell lysate; Lane3: Porcine Pancreas lysate; Lane4: Mouse Pancreas lysate
 Primary Ab: 1?g/ml Rabbit Anti-Human Bcl2 Antibody
 Second Ab: 0.2µg/mL HRP-Linked Caprine Anti-Rabbit IgG Polyclonal Antibody
 (Catalog: SAA544Rb19)



Western Blot; Sample: Lane1: Human Placenta lysate; Lane2: Jurkat cell lysate; Lane3: U937 cell lysate
 Primary Ab: 0.3?g/ml Rabbit Anti-Human Bcl2 Antibody
 Second Ab: 0.2µg/mL HRP-Linked Caprine Anti-Rabbit IgG Polyclonal Antibody
 (Catalog: SAA544Rb19)



FITC staining on IF;
 Samples: Human HepG2 cell;
 Primary Ab: 20?g/ml Rabbit Anti-Human Bcl2 Antibody
 Second Ab: 1.5?g/ml FITC-Linked Caprine Anti-Rabbit IgG Polyclonal Antibody
 (Catalog: SAA544Rb18)

[IMPORTANT NOTE]

The kit is designed for research use only, we will not be responsible for any issue if the kit was used in clinical diagnostic or any other procedures.