

PAB600Hu01

Polyclonal Antibody to B-Cell Linker Protein (BLNK)

Organism Species: *Homo sapiens (Human)*

Instruction manual

FOR RESEARCH USE ONLY

NOT FOR USE IN CLINICAL DIAGNOSTIC PROCEDURES

13th Edition (Revised in Aug, 2023)

[PROPERTIES]

Source: Polyclonal antibody preparation

Host: Rabbit

Purification: Antigen-specific affinity chromatography followed by Protein A affinity chromatography

Traits: Liquid

Concentration: 0.31mg/ml

UOM: 100µl

Cross Reactivity: Mouse

Applications: WB; IHC; ICC; IP.

[IMMUNOGEN]

Immunogen: Recombinant BLNK (Ser65~Thr314 (Accession # Q8WV28)) expressed in *E.coli*

Accession No.: RPB600Hu01

[APPLICATIONS]

Western blotting: 0.01-2µg/mL;

Immunohistochemistry: 5-20µg/mL;

Immunofluorescence:5-20µg/mL;

Optimal working dilutions must be determined by end user.

[FORMULATION]

Form & Buffer: Supplied as solution form in PBS, pH7.4, containing 0.02% NaN₃, 50% glycerol.

[STORAGE AND STABILITY]

Storage: Avoid repeated freeze/thaw cycles.

Store at 4°C for frequent use.

Aliquot and store at -20°C for 24 months.

Stability Test: The thermal stability is described by the loss rate. The loss rate was determined by accelerated thermal degradation test, that is, incubate the protein at 37°C for 48h, and no

obvious degradation and precipitation were observed. The loss rate is less than 5% within the expiration date under appropriate storage condition.

[IDENTIFICATION]

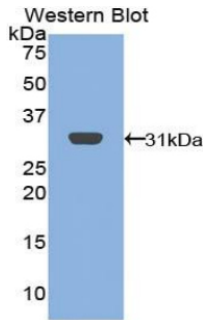
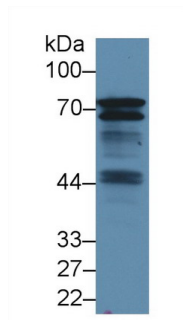
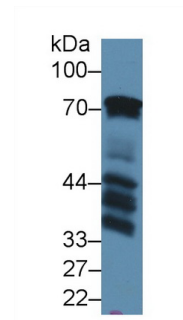


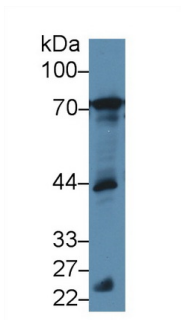
Figure. Western Blot; Sample: Recombinant BLNK, Human.



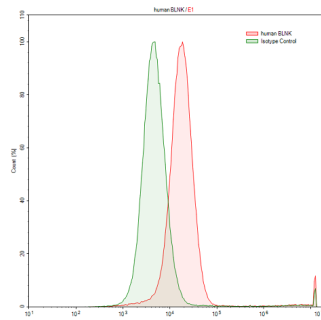
Western Blot; Sample: Mouse Spleen lysate;
 Primary Ab: 1.5µg/ml Rabbit Anti-Human BLNK Antibody
 Second Ab: 0.2µg/mL HRP-Linked Caprine Anti-Rabbit IgG Polyclonal Antibody
 (Catalog: SAA544Rb19)



Western Blot; Sample: Human Raji cell lysate;
 Primary Ab: 1.5µg/ml Rabbit Anti-Human BLNK Antibody
 Second Ab: 0.2µg/mL HRP-Linked Caprine Anti-Rabbit IgG Polyclonal Antibody
 (Catalog: SAA544Rb19)



Western Blot; Sample: Mouse Testis lysate;
 Primary Ab: 1.5µg/ml Rabbit Anti-Human BLNK Antibody
 Second Ab: 0.2µg/mL HRP-Linked Caprine Anti-Rabbit IgG Polyclonal Antibody
 (Catalog: SAA544Rb19)



Raji human Burkitt's lymphoma cell line was stained with rabbit Anti-human BLNK Polyclonal Antibody (Catalog # PAB600Hu01), filled red histogram) or Isotype control antibody (Catalog # IS067-Rb01, filled green histogram), followed by APC-conjugated Anti-rabbit IgG Secondary Antibody (Catalog # SAA544Rb15). Cells were fixed with

4% paraformaldehyde and
permeabilized with 0.1% Triton X-100.

[IMPORTANT NOTE]

The kit is designed for research use only, we will not be responsible for any issue if the kit was used in clinical diagnostic or any other procedures.