

PAB340Mi01

Polyclonal Antibody to Beta Actin (ACTB)

Organism Species: *Homo sapiens* (Human), *Mus musculus* (Mouse), *Rattus norvegicus* (Rat), *Cavia* (Guinea pig), *Canis familiaris*; Canine (Dog), *Sus scrofa*; Porcine (Pig), *Bos taurus*; Bovine (Cattle), *Ovis aries*; Ovine (Sheep), *Equus caballus*; Equine (Horse),

Chicken (*Gallus*)

Instruction manual

FOR RESEARCH USE ONLY

NOT FOR USE IN CLINICAL DIAGNOSTIC PROCEDURES

13th Edition (Revised in Aug, 2023)

[**PROPERTIES**]

Source: Polyclonal antibody preparation

Host: Rabbit

Purification: Antigen-specific affinity chromatography followed by Protein A affinity chromatography

Traits: Liquid

Concentration: 0.5mg/mL

UOM: 100µg(200µL)

Cross Reactivity: N/A

Applications: WB; IHC; ICC; IP.

[**IMMUNOGEN**]

Immunogen: Recombinant ACTB (Met1~Phe375) expressed in *E.coli*

Accession No.: RPB340Mi01

[**APPLICATIONS**]

Western blotting: 0.01-2µg/mL;

Immunohistochemistry: 5-20µg/mL;

Immunocytochemistry: 5-20µg/mL;

Optimal working dilutions must be determined by end user.

[**FORMULATION**]

Form & Buffer: Supplied as solution form in PBS, pH7.4, containing 0.02% NaN₃, 50% glycerol.

[**STORAGE AND STABILITY**]

Storage: Avoid repeated freeze/thaw cycles.

Store at 4°C for frequent use.

Aliquot and store at -20°C for 24 months.

Stability Test: The thermal stability is described by the loss rate. The loss rate was determined by accelerated thermal degradation test, that is, incubate the protein at 37°C for 48h, and no

obvious degradation and precipitation were observed. The loss rate is less than 5% within the expiration date under appropriate storage condition.

[IDENTIFICATION]

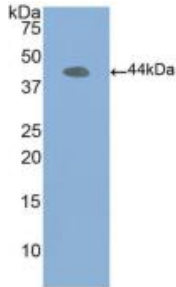
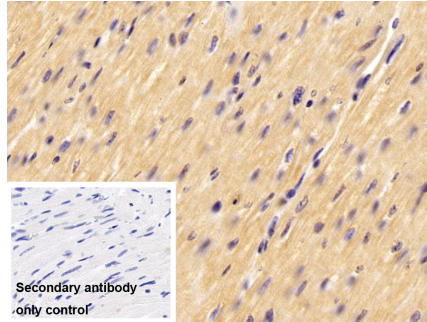
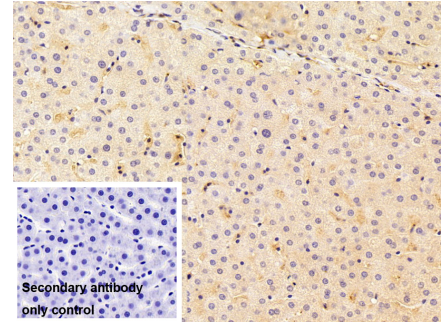


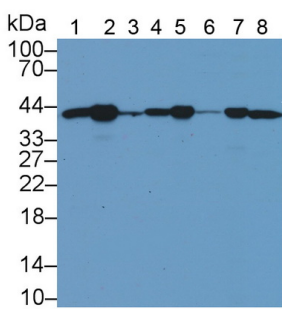
Figure. Western Blot; Sample: Recombinant ACTb.



DAB staining on IHC-P;
Sample: Rat Cardiac Muscle Tissue
Primary Ab: 10µg/ml Rabbit Anti-Multi-species ACTB Antibody
Control: Used PBS instead of primary antibody
Second Ab: 2?g/ml HRP-Linked Caprine Anti-Rabbit IgG Polyclonal Antibody
(Catalog: SAA544Rb19)



DAB staining on IHC-P;
Sample: Rat Liver Tissue
Primary Ab: 10µg/ml Rabbit Anti-Multi-species ACTB Antibody
Control: Used PBS instead of primary antibody
Second Ab: 2?g/ml HRP-Linked Caprine Anti-Rabbit IgG Polyclonal Antibody
(Catalog: SAA544Rb19)



Western Blot; Sample: Lane1: Rat Cerebrum lysate; Lane2: Rat Heart lysate; Lane3: Mouse Liver lysate; Lane4: Mouse Cerebrum lysate; Lane5: Mouse Heart lysate; Lane6: Porcine Liver lysate; Lane7: Porcine Cerebrum lysate; Lane8: Porcine Heart lysate

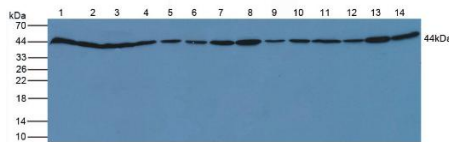


Figure. Western Blot; Sample: Lane1: Human HeLa Cells; Lane2: Human HepG2 Cells; Lane3: Human MCF-7 Cells; Lane4: Human BXPc-3 Cells; Lane5: Human A875 Cells; Lane6: Human A431 Cells; Lane7: Human Raji Cells; Lane8: Human RAW264.7 Cells; Lane9: Human PC-3 Cells; Lane10: Human SGC7901 Cells; Lane11: Human HL60 Cells; Lane12: Human

Primary Ab: 1µg/mL Rabbit Anti-Multi- A-375 Cells; Lane13: Human Jurkat
species ACTb Ab Cells; Lane14: Human SKOV3 Cells.

Second Ab: 0.2µg/mL HRP-Linked
Caprine Anti-Rabbit IgG Polyclonal
Antibody

(Catalog: SAA544Rb19)

[IMPORTANT NOTE]

The kit is designed for research use only, we will not be responsible for any issue if the kit was used in clinical diagnostic or any other procedures.