

PAE031Mu01

**Polyclonal Antibody to Calcineurin Like Phosphoesterase Domain Containing Protein 1
(CPPED1)**

Organism Species: *Mus musculus* (Mouse)

Instruction manual

FOR RESEARCH USE ONLY
NOT FOR USE IN CLINICAL DIAGNOSTIC PROCEDURES

13th Edition (Revised in Aug, 2023)

[PROPERTIES]

Source: Polyclonal antibody preparation

Host: Rabbit

Purification: Antigen-specific affinity chromatography followed by Protein A affinity chromatography

Traits: Liquid

Concentration: 0.5mg/mL

UOM: 100µl

Cross Reactivity: Human; Rat

Applications: WB; IHC

[IMMUNOGEN]

Immunogen: Recombinant CPPED1 (Met1~Glu312) expressed in *E.coli*

Accession No.: RPE031Mu01

[APPLICATIONS]

Western blotting: 0.01-2µg/mL;

Immunohistochemistry: 5-20µg/mL;

Optimal working dilutions must be determined by end user.

[FORMULATION]

Form & Buffer: Supplied as solution form in 0.01M PBS, pH7.4, containing 0.05% Proclin-300, 50% glycerol.

[STORAGE AND STABILITY]

Storage: Avoid repeated freeze/thaw cycles.

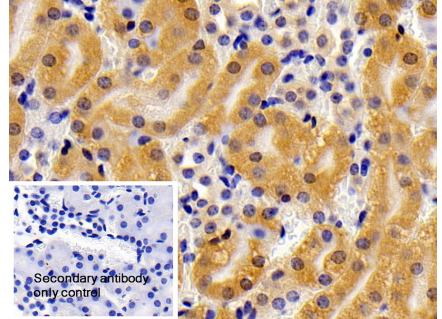
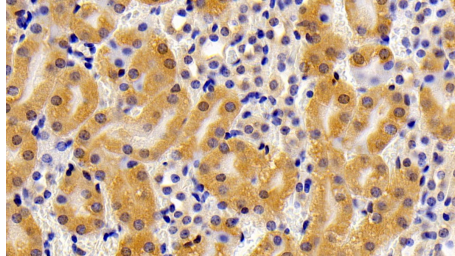
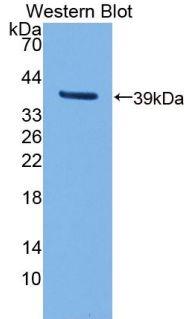
Store at 4°C for frequent use.

Aliquot and store at -20°C for 24 months.

Stability Test: The thermal stability is described by the loss rate. The loss rate was determined by accelerated thermal degradation test, that is, incubate the protein at 37°C for 48h, and no obvious degradation and precipitation were observed. The loss rate is less than 5% within the

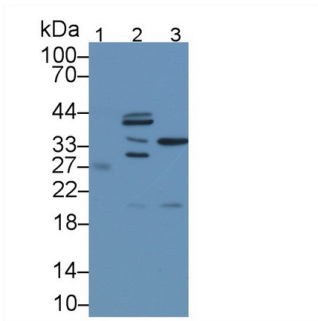
expiration date under appropriate storage condition.

[IDENTIFICATION]



DAB staining on IHC-P; Samples:
 Mouse Kidney Tissue; Primary Ab:
 10µg/ml Rabbit Anti-Mouse CPPED1
 Antibody Second Ab: 2µg/mL HRP-
 Linked Caprine Anti-Rabbit IgG
 Polyclonal Antibody (Catalog:
 SAA544Rb19)

DAB staining on IHC-P;
 Sample: Mouse Kidney Tissue
 Primary Ab: 10µg/ml Rabbit Anti-Mouse
 CPPED1 Antibody
 Control: Used PBS instead of primary
 antibody
 Second Ab: 2µg/ml HRP-Linked
 Caprine Anti-Rabbit IgG Polyclonal
 Antibody
 (Catalog: SAA544Rb19)



Western Blot; Sample: Lane1: Human
 Serum; Lane2: Mouse Heart lysate;
 Lane3: Mouse Liver lysate;
 Primary Ab: 1µg/ml Rabbit Anti-Mouse
 CPPED1 Antibody
 Second Ab: 0.2µg/ml HRP-Linked
 Caprine Anti-Rabbit IgG Polyclonal
 Antibody
 (Catalog: SAA544Rb19)

[IMPORTANT NOTE]

The kit is designed for research use only, we will not be responsible for any issue if the kit was used in clinical diagnostic or any other procedures.