

**PAM449Hu01**

**Polyclonal Antibody to Canopy 2 Homolog (CNPY2)**

**Organism Species: *Homo sapiens (Human)***

***Instruction manual***

FOR RESEARCH USE ONLY

NOT FOR USE IN CLINICAL DIAGNOSTIC PROCEDURES

---

13th Edition (Revised in Aug, 2023)

### [ **PROPERTIES** ]

**Source:** Polyclonal antibody preparation

**Host:** Rabbit

**Purification:** Antigen-specific affinity chromatography followed by Protein A affinity chromatography

**Traits:** Liquid

**Concentration:** 0.5mg/mL

**UOM:** 100µl

**Cross Reactivity:** Rat;Mouse;Porcine

**Applications:** WB,IHC,ICC/IF

### [ **IMMUNOGEN** ]

**Immunogen:** Recombinant CNPY2 (Arg21~Leu182) expressed in *E.coli*

**Accession No.:** RPM449Hu01

### [ **APPLICATIONS** ]

Western blotting: 0.01-2µg/mL;1:470-1900

Immunohistochemistry: 5-20µg/mL;1:47-190

Immunocytochemistry: 5-20µg/mL;1:47-190

Optimal working dilutions must be determined by end user.

### [ **FORMULATION** ]

**Form & Buffer:** Supplied as solution form in 0.01M PBS, pH7.4, containing 0.05% Proclin-300, 50% glycerol.

### [ **STORAGE AND STABILITY** ]

**Storage:** Avoid repeated freeze/thaw cycles.

Store at 4°C for frequent use.

Aliquot and store at -20°C for 24 months.

**Stability Test:** The thermal stability is described by the loss rate. The loss rate was determined by accelerated thermal degradation test, that is, incubate the protein at 37°C for 48h, and no

obvious degradation and precipitation were observed. The loss rate is less than 5% within the expiration date under appropriate storage condition.

**[ IDENTIFICATION ]**

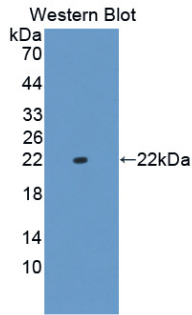
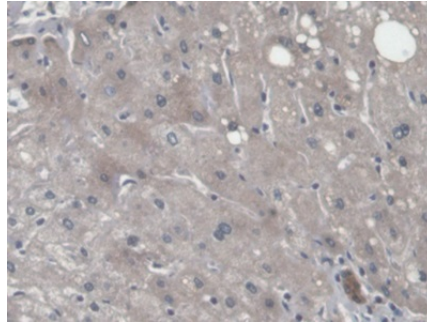
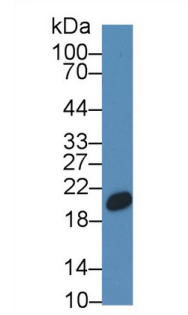


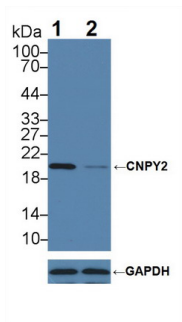
Figure. Western Blot; Sample: Recombinant CNPY2, Human.



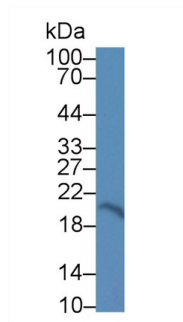
DAB staining on IHC-P; Samples: Human Liver Tissue; Primary Ab: 20µg/ml Rabbit Anti-Human CNPY2 Antibody Second Ab: 2µg/mL HRP-Linked Caprine Anti-Rabbit IgG Polyclonal Antibody (Catalog: SAA544Rb19)



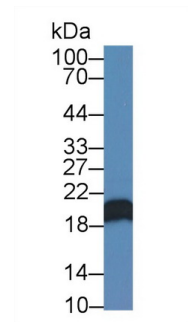
Western Blot; Sample: Porcine Liver lysate; Primary Ab: 1µg/ml Rabbit Anti-Human CNPY2 Antibody Second Ab: 0.2µg/mL HRP-Linked Caprine Anti-Rabbit IgG Polyclonal Antibody (Catalog: SAA544Rb19) Selected



Knockout Varification:  
Lane 1: Wild-type MCF7 cell lysate;  
Lane 2: CNPY2 knockout MCF7 cell lysate;  
Predicted MW: 21,9kd  
Observed MW: 20kd  
Primary Ab: 1µg/ml Rabbit Anti-Human CNPY2 Antibody  
Second Ab: 0.2µg/mL HRP-Linked



Western Blot; Sample: Porcine Pancreas lysate;  
Primary Ab: 1µg/ml Rabbit Anti-Human CNPY2 Antibody  
Second Ab: 0.2µg/mL HRP-Linked Caprine Anti-Rabbit IgG Polyclonal Antibody (Catalog: SAA544Rb19) Selected

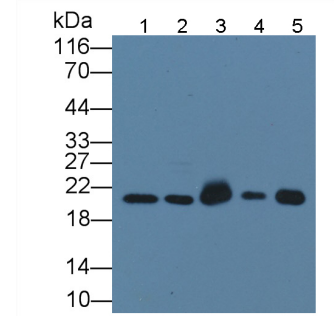
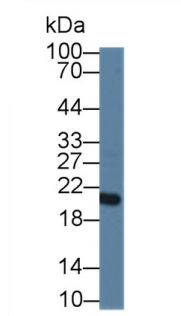
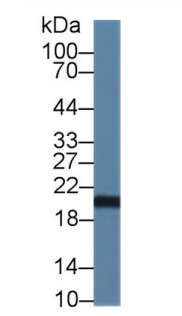


Western Blot; Sample: MCF7 cell lysate;  
Primary Ab: 1µg/ml Rabbit Anti-Human CNPY2 Antibody  
Second Ab: 0.2µg/mL HRP-Linked Caprine Anti-Rabbit IgG Polyclonal Antibody (Catalog: SAA544Rb19) Selected

Caprine Anti-Rabbit IgG Polyclonal

Antibody

(Catalog: SAA544Rb19)



Western Blot; Sample: HepG2 cell lysate;

Primary Ab: 1µg/ml Rabbit Anti-Human CNPY2 Antibody

Second Ab: 0.2µg/mL HRP-Linked Caprine Anti-Rabbit IgG Polyclonal Antibody

(Catalog: SAA544Rb19) Selected

Western Blot; Sample: HeLa cell lysate; Primary Ab: 1µg/ml Rabbit Anti-Human CNPY2 Antibody

Second Ab: 0.2µg/mL HRP-Linked Caprine Anti-Rabbit IgG Polyclonal Antibody

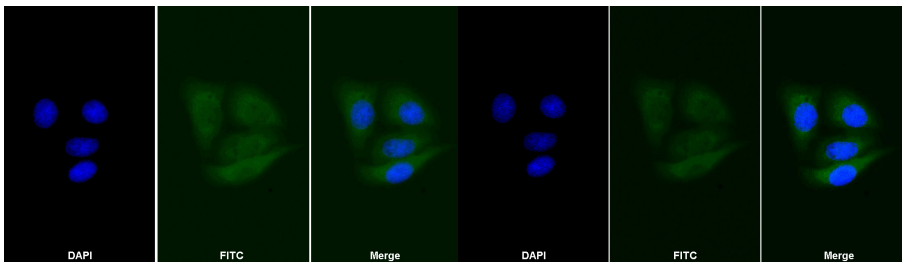
(Catalog: SAA544Rb19) Selected

Western Blot; Sample: Lane1: HepG2 cell lysate; Lane2: HeLa cell lysate; Lane3: Mouse Pancreas lysate; Lane4: Porcine Liver lysate; Lane5: Rat Liver lysate

Primary Ab: 1µg/ml Rabbit Anti-Human CNPY2 Antibody

Second Ab: 0.2µg/mL HRP-Linked Caprine Anti-Rabbit IgG Polyclonal Antibody

(Catalog: SAA544Rb19)



FITC staining on IF;

Samples: Human MCF7 cell;

Primary Ab: 20µg/ml Rabbit Anti-Human CNPY2 Antibody

Second Ab: 1.5µg/ml FITC-Linked Caprine Anti-Rabbit IgG Polyclonal Antibody

(Catalog: SAA544Rb18)

FITC staining on IF; Sample: MCF7 cell

Primary Ab: 20µg/ml Rabbit Anti-Human CNPY2 Antibody

Second Ab: 2µg/ml FITC-Linked Caprine Anti-Rabbit IgG Polyclonal Antibody

(Catalog: SAA544Rb11)

**[ IMPORTANT NOTE ]**

The kit is designed for research use only, we will not be responsible for any issue if the kit was used in clinical diagnostic or any other procedures.