

**PAC374Ra01**

**Polyclonal Antibody to Carboxylesterase 1 (CES1)**

**Organism Species: *Rattus norvegicus* (Rat)**

***Instruction manual***

FOR RESEARCH USE ONLY

NOT FOR USE IN CLINICAL DIAGNOSTIC PROCEDURES

---

13th Edition (Revised in Aug, 2023)

**[ PROPERTIES ]**

**Source:** Polyclonal antibody preparation

**Host:** Rabbit

**Purification:** Antigen-specific affinity chromatography followed by Protein A affinity chromatography

**Traits:** Liquid

**Concentration:** 0.5mg/mL

**UOM:** 100µl

**Cross Reactivity:** N/A

**Applications:** WB; IHC

**[ IMMUNOGEN ]**

**Immunogen:** Recombinant CES1 (His19~Leu300) expressed in *E.coli*

**Accession No.:** RPC374Ra01

**[ APPLICATIONS ]**

Western blotting: 0.01-2µg/mL;

Immunohistochemistry: 5-20µg/mL;

Optimal working dilutions must be determined by end user.

**[ FORMULATION ]**

**Form & Buffer:** Supplied as solution form in 0.01M PBS, pH7.4, containing 0.05% Proclin-300, 50% glycerol.

**[ STORAGE AND STABILITY ]**

**Storage:** Avoid repeated freeze/thaw cycles.

Store at 4°C for frequent use.

Aliquot and store at -20°C for 24 months.

**Stability Test:** The thermal stability is described by the loss rate. The loss rate was determined by accelerated thermal degradation test, that is, incubate the protein at 37°C for 48h, and no obvious degradation and precipitation were observed. The loss rate is less than 5% within the

expiration date under appropriate storage condition.

**[ IDENTIFICATION ]**

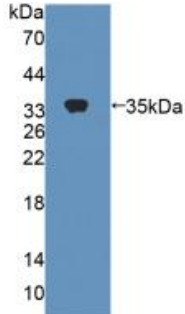


Figure. Western Blot; Sample:  
Recombinant CES1, Rat.

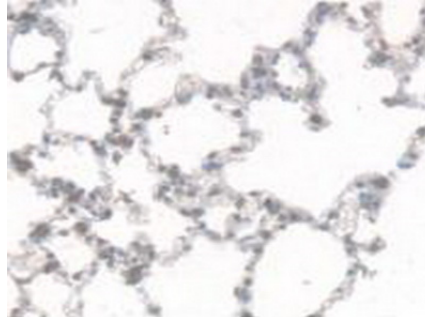
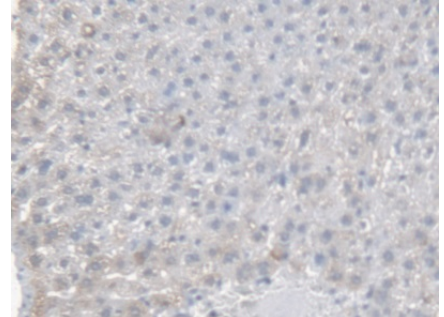


Figure. DAB staining on IHC-P;  
Samples: Rat Lung Tissue.



DAB staining on IHC-P;  
Samples: Rat Liver Tissue;  
Primary Ab: 20µg/ml Rabbit Anti-Rat  
CES1 Antibody  
Second Ab: 2µg/mL HRP-Linked  
Caprine Anti-Rabbit IgG Polyclonal  
Antibody  
(Catalog: SAA544Rb19)

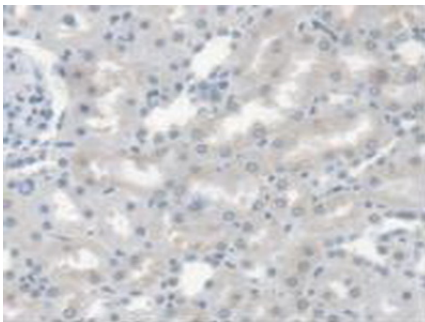


Figure. DAB staining on IHC-P;  
Samples: Rat Kidney Tissue.

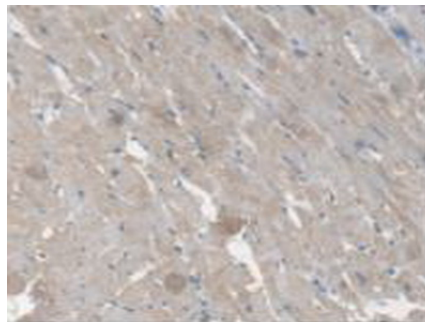
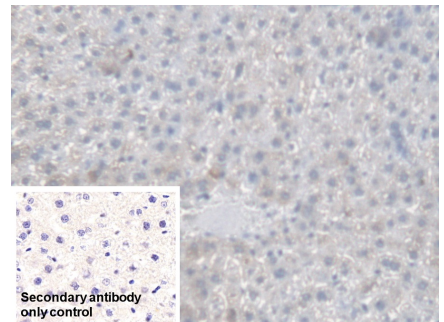
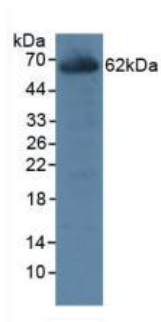


Figure. DAB staining on IHC-P;  
Samples: Rat Heart Tissue.



DAB staining on IHC-P;  
Sample: Rat Liver Tissue  
Primary Ab: 20µg/ml Rabbit Anti-Rat  
CES1 Antibody  
Control: Used PBS instead of primary  
antibody  
Second Ab: 2µg/ml HRP-Linked  
Caprine Anti-Rabbit IgG Polyclonal  
Antibody  
(Catalog: SAA544Rb19)



Western Blot; Sample: Rat Liver lysate

Primary Ab: 1 $\mu$ g/ml Rabbit Anti-Rat

CES1 Antibody

Second Ab: 0.2 $\mu$ g/ml HRP-Linked

Caprine Anti-Rabbit IgG Polyclonal

Antibody

(Catalog: SAA544Rb19)

### **[ IMPORTANT NOTE ]**

The kit is designed for research use only, we will not be responsible for any issue if the kit was used in clinical diagnostic or any other procedures.