

PAB592Mu01

Polyclonal Antibody to Caspase 1 (CASP1)

Organism Species: *Mus musculus* (Mouse)

Instruction manual

FOR RESEARCH USE ONLY

NOT FOR USE IN CLINICAL DIAGNOSTIC PROCEDURES

13th Edition (Revised in Aug, 2023)

[**PROPERTIES**]

Source: Polyclonal antibody preparation

Host: Rabbit

Purification: Antigen-specific affinity chromatography followed by Protein A affinity chromatography

Traits: Liquid

Concentration: 0.5mg/mL

UOM: 10 μ L

Cross Reactivity: Rat

Applications: WB; IHC; ICC; IP.

[**IMMUNOGEN**]

Immunogen: Recombinant CASP1 (Asn119~Asp296) expressed in *E.coli*

Accession No.: RPB592Mu01

[**APPLICATIONS**]

Western blotting: 0.01-3 μ g/mL

Immunohistochemistry: 5-30 μ g/mL

Immunocytochemistry: 5-30 μ g/mL

Optimal working dilutions must be determined by end user.

[**FORMULATION**]

Form & Buffer: Supplied as solution form in 0.01M PBS, pH7.4, containing 0.05% Proclin-300, 50% glycerol.

[**STORAGE AND STABILITY**]

Storage: Avoid repeated freeze/thaw cycles.

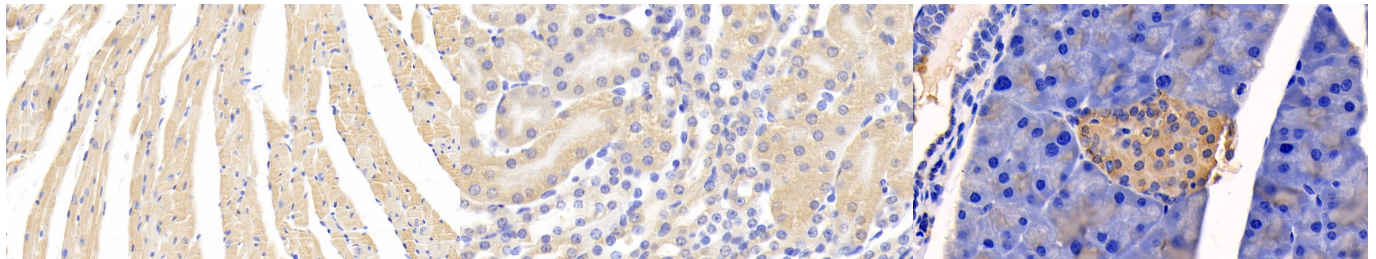
Store at 4°C for frequent use.

Aliquot and store at -20°C for 24 months.

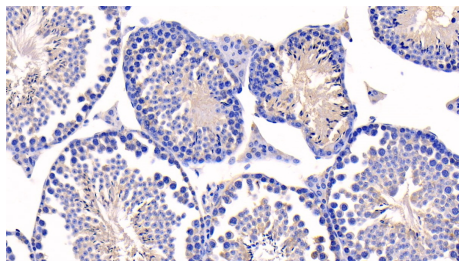
Stability Test: The thermal stability is described by the loss rate. The loss rate was determined by accelerated thermal degradation test, that is, incubate the protein at 37°C for 48h, and no

obvious degradation and precipitation were observed. The loss rate is less than 5% within the expiration date under appropriate storage condition.

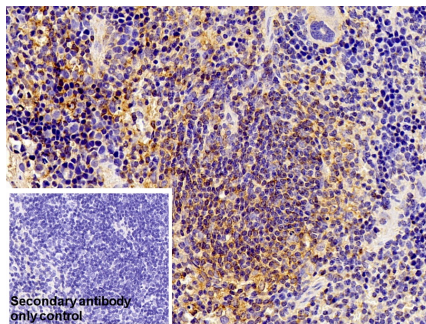
[IDENTIFICATION]



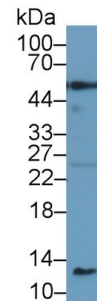
| | | |
|--|--|--|
| <p>DAB staining on IHC-P; Samples: Mouse Cardiac Muscle Tissue; Primary Ab: 20?g/ml Rabbit Anti-Mouse CASP1 Antibody Second Ab: 2µg/mL HRP-Linked Caprine Anti-Rabbit IgG Polyclonal Antibody (Catalog: SAA544Rb19)</p> | <p>DAB staining on IHC-P; Samples: Mouse Kidney Tissue; Primary Ab: 20?g/ml Rabbit Anti-Mouse CASP1 Antibody Second Ab: 2µg/mL HRP-Linked Caprine Anti-Rabbit IgG Polyclonal Antibody (Catalog: SAA544Rb19)</p> | <p>DAB staining on IHC-P; Samples: Mouse Pancreas Tissue; Primary Ab: 30ug/ml Rabbit Anti-Mouse CASP1 Antibody Second Ab: 2µg/mL HRP-Linked Caprine Anti-Rabbit IgG Polyclonal Antibody (Catalog: SAA544Rb19)</p> |
|--|--|--|



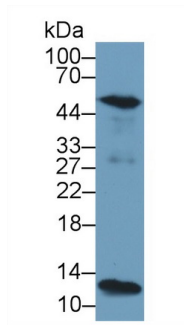
DAB staining on IHC-P;
 Samples: Mouse Testis Tissue;
 Primary Ab: 30ug/ml Rabbit Anti-Mouse
 CASP1 Antibody Second Ab: 2µg/mL HRP-Linked
 Caprine Anti-Rabbit IgG Polyclonal
 Antibody (Catalog: SAA544Rb19)



DAB staining on IHC-P;
 Sample: Mouse Spleen Tissue
 Primary Ab: 20µg/ml Rabbit Anti-Mouse
 CASP1 Antibody Control: Used PBS instead of primary
 antibody Second Ab: 2?g/ml HRP-Linked
 Caprine Anti-Rabbit IgG Polyclonal
 Antibody (Catalog: SAA544Rb19)

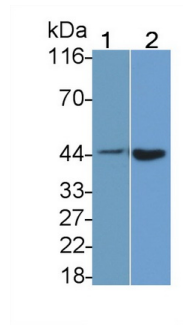


Western Blot; Sample: Mouse Lung
 lysate;
 Primary Ab: 1µg/ml Rabbit Anti-Mouse
 CASP1 Antibody Second Ab: 0.2µg/mL HRP-Linked
 Caprine Anti-Rabbit IgG Polyclonal
 Antibody (Catalog: SAA544Rb19)



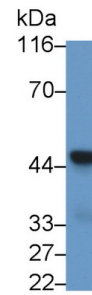
Western Blot; Sample: Mouse Spleen lysate;

Primary Ab: 1µg/ml Rabbit Anti-Mouse
 CASP1 Antibody
 Second Ab: 0.2µg/mL HRP-Linked
 Caprine Anti-Rabbit IgG Polyclonal
 Antibody
 (Catalog: SAA544Rb19)



Western Blot; Sample: Lane1: 3T3-L1 cell lysate; Lane2: RAW264.7 cell lysate

Primary Ab: 1?g/ml Rabbit Anti-Mouse
 CASP1 Antibody
 Second Ab: 0.2µg/mL HRP-Linked
 Caprine Anti-Rabbit IgG Polyclonal
 Antibody
 (Catalog: SAA544Rb19)



Western Blot; Sample: Rat Spleen lysate

Primary Ab: 1ug/ml Rabbit Anti-Mouse
 CASP1 Antibody
 Second Ab: 0.2µg/mL HRP-Linked
 Caprine Anti-Rabbit IgG Polyclonal
 Antibody
 (Catalog: SAA544Rb19)

[IMPORTANT NOTE]

The kit is designed for research use only, we will not be responsible for any issue if the kit was used in clinical diagnostic or any other procedures.